



POWER TOOLS

POWER TOOLS

TECHNICAL INFORMATION

The most important product information at a glance

GENERAL

Our pneumatic power tools are characterised by high performance and low air consumption. The robust vane motors remain undamaged even when they stop under load.

The tools are fitted with a speed limiter, always keeping the idle speed within the specified tolerance. The service-friendly design allows wearing parts to be replaced quickly and easily.

COMPRESSED AIR SUPPLY

The motors operate at full power from a flow pressure of just 0.63 MPa (= 6.3 bar). We would be happy to advise you regarding the ideal specifications for the compressed air supply line. Please refer to the technical information for details about hose cross sections.

Air consumption (see machine data)	Connecting thread
0.05–0.5 m ³ /min	G 1/4"
0.15–0.9 m ³ /min	G 3/8"
0.5–1.5 m ³ /min	G 1/2"
0.8–6.0 m ³ /min	G 3/4"

VANE MOTOR LUBRICATION

A maintenance unit, comprising a water separator and an oiler, reliably protects the vane motors against wear, minimises the maintenance requirements, and prolongs their service life.

ERGONOMICS AND SAFETY

Vibration

To protect the operators, all of our power tools are tested and labelled in compliance with the current European Noise and Vibration Directive. The vibrations are recorded and calculated in three dimensions.

Ergonomics

Compared to electrical power tools, pneumatic motors offer greater performance at a lower weight. Thanks to their ergonomically shaped and insulated handles, the tools lie comfortably in the hand and won't tire the user.

Even difficult-to-access workpieces can be effortlessly machined using LUKAS pneumatic tools, as the spindle length, air outlet and valve design of many of the machine tools can be perfectly adapted to suit the user's requirements.

Safety

They can even be used in areas where there is a risk of explosion.

Quality

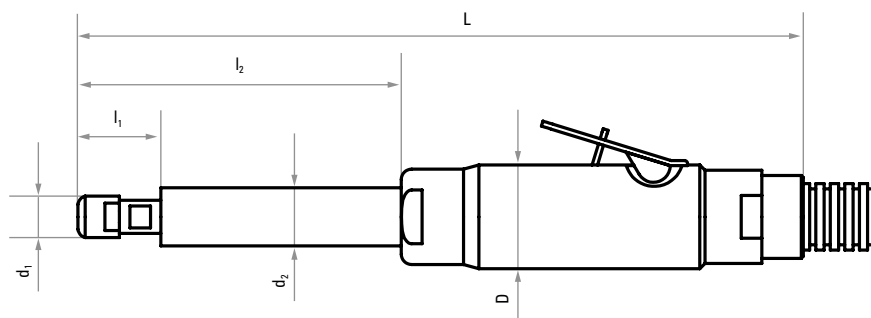
All of our power tools have a robust aluminium casing and are designed for use in harsh environments. The motors cannot overheat even when used continuously at maximum power. As part of our full quality control policy, all tools are subjected to speed and performance tests before they leave the factory.

Safety advice

Only tools that are suitable and approved in terms of safety for the peripheral speeds that can be attained with the respective machines may be used.

TECHNICAL INFORMATION

All LUKAS power tools at a glance



Power tool	Description	Speed rpm	Power kW	d_1 mm	l_1 mm	d_2 mm	l_2 mm	D mm	L mm	Page
Belt grinder, insulated	AMIN 30 BSH	30,000	0.300	19	28	h = 86		35	220	303
Straight grinder, insulated	AMIN 12-030 GD	12,000	0.300	16	26	-	-	35	195	304
	AMIN 15-030 GD	15,000	0.300	16	26	-	-	35	195	
	AMIN 12-030 GH	12,000	0.300	16	26	-	-	35	195	
Straight grinder with extension, insulated	AMIN 15-070 GH2L	15,300	0.700	24	35	24	440	46	630	305
Straight grinder, insulated	AMIN 19-100 GH	19,000	1.000	24	37	34	148	51	350	306
	AMIN 19-100 GHK	19,000	1.000	24	44	-	-	51	245	
Straight grinder, insulated	AMIN 20-030 GD	20,000	0.300	16	26	-	-	35	195	307
	AMIN 20-030 GH	20,000	0.300	16	26	-	-	35	195	
Straight grinder, insulated	AMIN 30-030 GD	30,000	0.300	14	16	-	-	36	190	308
	AMIN 30-030 GH	30,000	0.300	14	16	-	-	36	190	
Straight grinder, insulated	AMIN 32-027 GD	32,000	0.270	13	20	23	35	29	210	309
Straight grinder, insulated	AMIN 45-030 GD	45,000	0.300	14	16	-	-	36	190	310
	AMIN 45-030 GH	45,000	0.300	14	16	-	-	36	190	
Straight grinder, insulated	AMIN 55-011 GD	55,000	0.110	9	14	-	-	20	125	311
Straight grinder, insulated	AMIN 72-013 GD	72,000	0.130	10	15	-	-	29	165	312
Conditioning machine	ESM 1310 S	1,300-3,050	1,300	-	-	-	-	-	-	313

MADE TO TACKLE THE TOUGHEST CHALLENGES

PREMIUM-QUALITY POWER TOOLS FOR PREMIUM-QUALITY TOOLS

A range of LUKAS pneumatic grinders and LUKAS pneumatic tools is available so that you can use LUKAS tools in the most effective way. Our range of pneumatic grinders and pneumatic tools includes angle grinders (with turbine drive), belt grinders and a wide variety of straight grinders.

LUKAS pneumatic grinders and pneumatic tools are designed according to the most stringent quality requirements for withstanding extreme strain and to get the most out of LUKAS

top-performance tools. LUKAS power tools are characterised by their high performance and low air consumption during use. The robust vane motors achieve steadfast performance, even for harder cutting work. Even stopping under load won't damage them! Speed limiters keep the idle speed within the design tolerances. As an added benefit, replacing the wearing parts of LUKAS pneumatic grinders and pneumatic tools can be done quickly and easily.



Belt grinder, insulated

Included with the machine:

- clamping arm for long belts, size 13 x 305 mm
- air feed hose
- exhaust air hose with muffler
- collet 6 mm
- operating tool/spanner

Special accessories:

- collets for Ø 3 mm, 4 mm, 5 mm, 1/8", 3/16", 1/4"
- belt arms in various dimensions (lengths, widths and roll diameters) available from stock

Technical details:

- length: approx. 325 mm
- height: approx. 86 mm
- weight: approx. 0.90 kg
- drive type: vane motor

► Further technical details can be found on **page 301**.



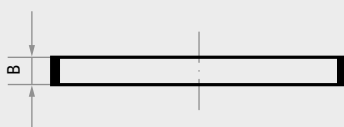
Product number	Description	Valve	Idle speed (rpm)	Power kW	Air consumption under load m ³ /min	Abrasive belt peripheral speed m/s	Nominal hose size mm	Pack contains
A3993302113	AMIN 30 BSH	Lever	30,000	0.3	0.45	28	6	1



Suitable long belts are available from stock.

Please pay attention to the respective speed specifications on our tool packaging.

SBL finishing belt



Product number	Description	Grit	B mm	Length mm	Fabric	Pack contains
A3000130305060T	SBLT	NK 60	13	305	robustly flexible	100
A3000130305080T	SBLT	NK 80	13	305	robustly flexible	100
A3000130305120T	SBLT	NK 120	13	305	robustly flexible	100

Recommended for: ● Steel ● Cast material ● Plastic/Wood ● Inox/Steel ● Aluminium ● Titanium

Straight grinder, insulated



Technical details:

- length: approx. 175 mm
- casing diameter: 34.5 mm
- weight: approx. 0.90 kg
- drive type: vane motor, integrated speed control

► Further technical details can be found on **page 301**.

Included with the machine:

- air feed hose
- exhaust air hose with muffler
- collet: 6 mm
- operating tool/spanner

Special accessories:

- collets for Ø 3 mm, 4 mm, 5 mm, 1/8", 3/16", 1/4"



Product number	Description	Valve	Idle speed (rpm)	Power kW	Air consumption under load m ³ /min	Collet Ø mm	Nominal hose size mm	Pack contains
A3993101112	AMIN 12-030 GD	Twist	12,000	0.3	0.49	6	8	1
A3993102112	AMIN 12-030 GH	Lever	12,000	0.3	0.49	6	8	1
A3993101115003	AMIN 15-030 GD	Twist	15,000	0.3	0.52	6	8	1

Can be used with the following LUKAS tools		Dimensions	Catalogue page
AMIN 12-030 GD/GH	Tungsten carbide burrs	up to Ø 20 mm	17–43
	HSS burrs	up to Ø 8 mm	48–55
	SFV/M mounted flap wheels	Ø 40 mm	175–180
	SFI mounted flap wheels	Ø 30 mm	172
	SFA mounted flap wheels	Ø 15 mm, 20 mm, 30 mm	173
	SBZY abrasive bands	up to Ø 30 mm	196–199, 201
	SBKE abrasive bands	up to Ø 36 mm	202
	SRZY/SRKE abrasive rolls	up to Ø 20 mm	206–208
	SK/SKS abrasive caps	up to Ø 21 mm	211–213
	SHKE abrasive sleeves	0885, 1385, 1885	205
	P1 polishing points	4020	101
	P2 polishing points	Ø 20 mm	104
	P5 polishing points	up to Ø 32 mm	113
AMIN 15-030 GD	Tungsten carbide burrs	up to Ø 16 mm	17–43
	HSS burrs	up to Ø 6 mm	48–53
	SFI mounted flap wheels	Ø 30 mm	172
	SFA mounted flap wheels	Ø 15 mm, 20 mm, 30 mm	173
	SBZY abrasive bands	up to Ø 25 mm	197–199
	SBKE abrasive bands	up to Ø 29 mm	202
	SRZY/SRKE abrasive rolls	up to Ø 20 mm	206–208
	SK/SKS abrasive caps	up to Ø 16 mm	211–213
SHKE abrasive sleeves	0885, 1385	205	



Please pay attention to the respective speed specifications on our tool packaging.



Straight grinder with spindle extension, insulated

Included with the machine:

- air feed hose
- exhaust air hose with muffler
- two spindle extensions (each 200 mm long)
- collet 6 mm
- operating tool/spanner

Special accessories:

- spindle extension: 200 mm (max. spindle extensions up to 1200 mm)
- collets for Ø 8 mm, 9 mm, 3/16", 1/4", 5/16"

Technical details:

- length: approx. 615 mm (size incl. two spindle extensions)
- casing diameter: 47 mm
- weight: approx. 2.1 kg
- drive type: vane motor, integrated speed control

► Further technical details can be found on **page 301**.



★★☆

Product number	Description	Valve	Idle speed (rpm)	Power kW	Air consumption under load m ³ /min	Collet Ø mm	Nominal hose size mm	Pack contains
A3993102115002	AMIN 15-070 GH2L	Lever	15,300	0.7	0.7	6	10	1

Can be used with the following LUKAS tools		Dimensions	Catalogue page
AMIN 15-070 GH2L	SFL/SFB/SFT/SFE/SFC mounted flap wheels	up to Ø 40 mm	164–171
	SFI mounted flap wheels	Ø 30 mm	172
	SFA mounted flap wheels	Ø 15 mm, 20 mm, 30 mm	173
	SBZY spiral belts	up to Ø 25 mm	197–199
	SBKE spiral belts	up to Ø 29 mm	202
	SRZY/SRKE abrasive rolls	up to Ø 20 mm	206–208
	SK/SKS abrasive caps	up to Ø 16 mm	211–213
	SHKE abrasive sleeves	0885, 1385	205
	P1 polishing points	Ø 32 mm	101
	P2 polishing points	Ø 16 mm	104



Please pay attention to the respective speed specifications on our tool packaging.



Straight grinder, insulated



Technical details:

- length AMIN 19-100 GH: approx. 310 mm
- length AMIN 19-100 GHK: approx. 190 mm
- casing diameter: 52 mm
- weight GH: approx. 2.3 kg
- weight GHK: approx. 1.7 kg
- drive type: vane motor, integrated speed control

► Further technical details can be found on **page 301**.

Included with the machine:

- air feed hose
- exhaust air hose with muffler
- collet: 6 mm
- operating tool/spanner

Special accessories:

- collets for Ø 8 mm, 9 mm, 3/16", 1/4", 5/16"

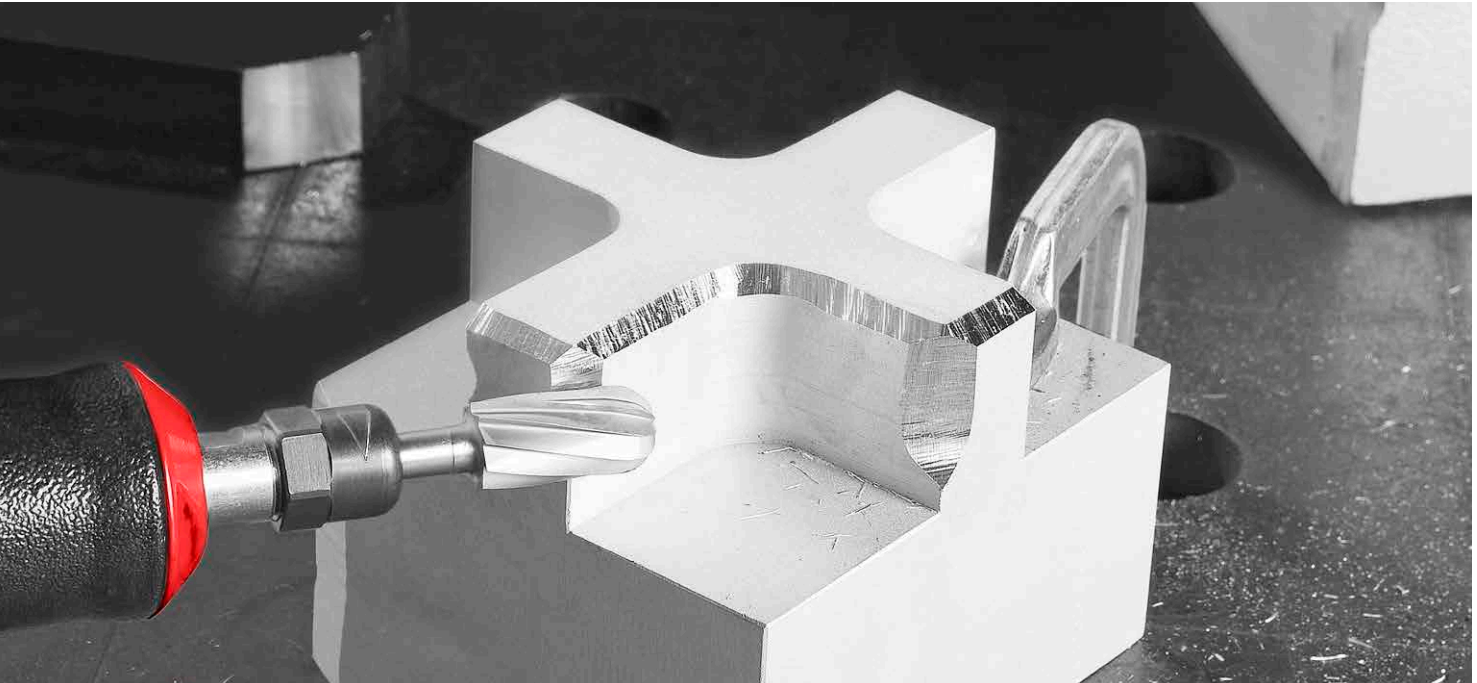
★★☆

Product number	Description	Valve	Idle speed (rpm)	Power kW	Air consumption under load m ³ /min	Collet Ø mm	Nominal hose size mm	Pack contains
A3993102119	AMIN 19-100 GH	Lever	19,000	1	1	6	12	1
A3993102119001	AMIN 19-100 GHK	Lever	19,000	1	1	6	12	1

Can be used with the following LUKAS tools		Dimensions	Catalogue page
AMIN 19-100 GH/GHK	Tungsten carbide burrs	up to Ø 12 mm	17–43
	HSS burrs	up to Ø 4 mm	50–53
	Mounted points	up to Ø 50 mm	73–93
	P1 polishing points	up to Ø 50 mm	100–101
	P2 polishing points	up to Ø 12 mm	103–104
	P3 polishing points	up to Ø 10 mm	106–07
	P5 polishing points	up to Ø 50 mm	113
	P6 polishing points	up to Ø 16 mm	116–20
	SK/SKS abrasive caps	up to Ø 13 mm	211–214
	SRZY/SRKE abrasive rolls	up to Ø 13 mm	206–208
	SBZY abrasive bands	up to Ø 19 mm	197–198
SBKE abrasive bands	up to Ø 29 mm	202	



Please pay attention to the respective speed specifications on our tool packaging.



Straight grinder, insulated

Included with the machine:

- air feed hose
- exhaust air hose with muffler
- collet: 6 mm
- operating tool/spanner

Special accessories:

- collets for Ø 3 mm, 4 mm, 5 mm, 1/8", 3/16", 1/4"

Technical details:

- length: approx. 175 mm
- casing diameter: 34.5 mm
- weight: approx. 0.90 kg
- drive type: vane motor, integrated speed control

► Further technical details can be found on **page 301**.



★★☆

Product number	Description	Valve	Idle speed (rpm)	Power kW	Air consumption under load m ³ /min	Collet Ø mm	Nominal hose size mm	Pack contains
A3993101120	AMIN 20-030 GD	Twist	20,000	0.3	0.53	6	8	1
A3993102120	AMIN 20-030 GH	Lever	20,000	0.3	0.45	6	8	1

Can be used with the following LUKAS tools		Dimensions	Catalogue page
AMIN 20-030 GD/GH	Tungsten carbide burrs	up to Ø 12 mm	17–43
	HSS burrs	up to Ø 4 mm	50–53
	SFL mounted flap wheels	Ø 20 mm	164–165
	SBZY abrasive bands	up to Ø 19 mm	197–198
	SBKE abrasive bands	up to Ø 29 mm	202
	SRZY/SRKE abrasive caps	up to Ø 13 mm	206–208
	SK/SKS abrasive caps	up to Ø 13 mm	211–214
	SHKE abrasive sleeves	Ø 885	265
	Mounted points, shank 6 mm	Ø 22 mm, 25 mm, 32 mm, 40 mm	73–93
	P2 polishing points	Ø 13 mm	103–104



Please pay attention to the respective speed specifications on our tool packaging.



Straight grinder, insulated



★★☆

Technical details:

- length: approx. 175 mm
- casing diameter: 34.5 mm
- weight: approx. 0.70 kg
- drive type: vane motor, integrated speed control

► Further technical details can be found on **page 301**.

Included with the machine:

- air feed hose
- exhaust air hose with muffler
- collet: 6 mm
- operating tool/spanner

Special accessories:

- collets for Ø 3 mm, 3.25 mm, 4 mm, 5 mm, 1/8", 3/16", 1/4"

Product number	Description	Valve	Idle speed (rpm)	Power kW	Air consumption under load m ³ /min	Collet Ø mm	Nominal hose size mm	Pack contains
A3993101130	AMIN 30-030 GD	Twist	30,000	0.3	0.45	6	6	1
A3993102130	AMIN 30-030 GH	Lever	30,000	0.3	0.45	6	6	1

Can be used with the following LUKAS tools		Dimensions	Catalogue page
AMIN 30-030 GD/GH	Tungsten carbide burrs	up to Ø 8 mm	17–43
	HSS burrs	up to Ø 3 mm	50–52
	Mounted points	up to Ø 32 mm	73–93
	P1 polishing points	up to Ø 32 mm	100–101
	P2 polishing points	up to Ø 10 mm	103–104
	P3 polishing points	up to Ø 10 mm	106–107
	P5 polishing points	up to Ø 32 mm	113
	P6 polishing points	up to Ø 12 mm	120
	SK/SKS abrasive caps	up to Ø 10 mm	211–214
	SBZY abrasive bands	up to Ø 12 mm	198



Please pay attention to the respective speed specifications on our tool packaging.



Straight grinder, insulated

Included with the machine:

- air feed hose
- exhaust air hose with muffler
- collet: 6 mm
- operating tool/spanner

Special accessories:

- collets for Ø 3 mm, 1/8", 1/4"

Technical details:


- length: approx. 206 mm
- casing diameter: approx. 30 mm
- spindle casing diameter: approx. 23 mm
- weight: approx. 0.40 kg
- drive type: vane motor
- frontal exhaust air (partial, can be shut off)

► Further technical details can be found on **page 301**.



Product number	Description	Valve	Idle speed (rpm)	Power kW	Air consumption under load m ³ /min	Collet Ø mm	Nominal hose size mm	Pack contains
A3993101132	AMIN 32-027 GD	Twist	32,000	0.27	0.3	6	6	1

Can be used with the following LUKAS tools		Dimensions	Catalogue page
AMIN 32-027 GD	Tungsten carbide burs	up to Ø 8 mm	17–43
	HSS burs	up to Ø 3 mm	50–52
	Mounted points	up to Ø 32 mm	73–93
	P1 polishing points	up to Ø 32 mm	100–101
	P2 polishing points	up to Ø 10 mm	103–104
	P3 polishing points	up to Ø 10 mm	106–107
	P5 polishing points	up to Ø 32 mm	113
	P6 polishing points	up to Ø 12 mm	120
	SK/SKS abrasive caps	up to Ø 10 mm	211–214
	SBZY abrasive bands	up to Ø 12 mm	198

 Please pay attention to the respective speed specifications on our tool packaging.



Straight grinder, insulated



★★☆

Technical details:

- length: approx. 175 mm
- casing diameter: 34.5 mm
- weight: approx. 0.70 kg
- drive type: vane motor

► Further technical details can be found on **page 301**.

Included with the machine:

- air feed hose
- exhaust air hose with muffler
- collet: 6 mm
- operating tool/spanner

Special accessories:

- collets for Ø 3 mm, 3.25 mm, 4 mm, 5 mm, 1/8", 3/16", 1/4"

Product number	Description	Valve	Idle speed (rpm)	Power kW	Air consumption under load m ³ /min	Collet Ø mm	Nominal hose size mm	Pack contains
A3993101145	AMIN 45-030 GD	Twist	45,000	0.3	0.5	6	6	1
A3993102145	AMIN 45-030 GH	Lever	45,000	0.3	0.5	6	6	1

Can be used with the following LUKAS tools		Dimensions	Catalogue page
AMIN 45-030 GD / GH	Tungsten carbide burrs	up to Ø 6 mm	17–43
	Mounted points	up to Ø 20 mm	73–90
	P1 polishing points	up to Ø 20 mm	100–101
	P2 polishing points	up to Ø 6 mm	103–104
	P3 polishing points	up to Ø 6 mm	106–107
	P5 polishing points	up to Ø 20 mm	113
	P6 polishing points	up to Ø 10 mm	120
	SK/SKS abrasive caps	up to Ø 5 mm	211–214
	SBZY abrasive bands	up to Ø 12 mm	198



Please pay attention to the respective speed specifications on our tool packaging.

Straight grinder, insulated

Properties:

- most powerful tool in its class
- compact design
- lockable speed switch

Included with the machine:

- air feed hose
- exhaust air hose with muffler
- collet: 3 mm
- operating tool/spanner

Technical details:

- length: approx. 130 mm
- casing diameter: 16 mm
- weight: approx. 0.24 kg
- drive type: vane motor



Special accessories:

- collets for Ø 2 mm, 3.25 mm, 1/8", 3/32"

► Further technical details can be found on **page 301**.



Product number	Description	Valve	Idle speed (rpm)	Power kW	Air consumption under load m ³ /min	Collet Ø mm	Nominal hose size mm	Pack contains
A3993101155	AMIN 55-011 GD	Twist	55,000	0.11	0.15	3	3	1

Can be used with the following LUKAS tools		Dimensions	Catalogue page
AMIN 55-011 GD	Tungsten carbide burrs	up to Ø 5 mm	18–43
	Mounted points	up to Ø 16 mm	73–89
	P1 polishing points	up to Ø 16 mm	100–101
	P2 polishing points	up to Ø 5 mm	103–104
	P5 polishing points	up to Ø 16 mm	113
	SK/SKS abrasive caps	up to Ø 5 mm	211–214
	SBZY abrasive bands	up to Ø 10 mm	198



Please pay attention to the respective speed specifications on our tool packaging.

Straight grinder, insulated



Technical details:

- length: approx. 154 mm
- casing diameter: 275 mm
- weight: approx. 0.45 kg
- drive type: vane motor

Included with the machine:

- air feed hose
- exhaust air hose with muffler
- collet: 3 mm
- operating tool/spanner

► Further technical details can be found on **page 301**.

Special accessories:

- collets for Ø 2 mm, 3.25 mm, 1/8", 3/32"

★★☆

Product number	Description	Valve	Idle speed (rpm)	Power kW	Air consumption under load m ³ /min	Collet Ø mm	Nominal hose size mm	Pack contains
A3993101172	AMIN 72-013 GD	Twist	72,000	0.13	0.21	3	5	1

Can be used with the following LUKAS tools		Dimensions	Catalogue page
AMIN 72-013 GD	Tungsten carbide burrs	up to Ø 4 mm	18–42
	Mounted points	up to Ø 13 mm	73–89
	P1 polishing points	up to Ø 13 mm	100–101
	P2 polishing points	up to Ø 4 mm	103–104
	P5 polishing points	up to Ø 13 mm	113



Please pay attention to the respective speed specifications on our tool packaging.



Conditioning machine

Properties:

- heavy-duty motor (stable)
- double gear reduction (long service life)
- dust-protected bearings (low wear)
- Shadow-free metal, wood or plastic surfaces without transitions can be achieved with the ideal tool.

With the appropriate tool, perfect for:

- conditioning
- structuring
- polishing
- brushing
- smoothening
- deburring
- matt finishing

Technical details:

- weight: approx. 2.8 kg
- electronic control with soft start, infinitely variable speed control, temperature and overload cut-off


► Further technical details can be found on **page 301**.



★★☆

Product number	Description	Idle speed (rpm)	Power kW	Tool max. Ø mm	Tool width mm	Tool holder mm	Pack contains
A3995ESM1310	ESM 1310 S	1,300–3,050	1.3	120	100	19	1

Can be used with the following LUKAS tools		Dimensions	Catalogue page
ESM 1310 S	P6 polishing rolls	100 x 50 mm, 100 x 100 mm	122
	SBZY abrasive belt rolls	100 x 100 mm	203
	LWL/LWV/LWM/LWF abrasive flap rolls	100 x 50 mm, 100 x 100 mm	190–193

 Please pay attention to the respective speed specifications on our tool packaging.