



PRODUCT CATALOG

NEXTORCH®



Tel: +86-20-8904 7029 (7070)
Fax: +86-20-8904 7039



Email: info@nextorch.com



Suite 1203, North Tower,
No.1068 XinGangDong Road,
Haizhu District,
Guangzhou, Guangdong,
China 510335



Learn More
Please visit: www.nextorch.com
Or contact your salesperson



www.nextorch.com



CONTENTS

NEXTORCH®

ILLUMINATION

HANDHELD FLASHLIGHTS

Search Lights	07-10
Tactical & Law Enforcement Flashlights	11-21
LEP Laser Lights	22

Outdoor & Everyday Carry Lights	23-26
---------------------------------	-------

Keychain & Pen Lights	27-30
-----------------------	-------

WEAPON LIGHTS	31-38
---------------	-------

HUNTING LIGHTS	39-44
----------------	-------

HELMET LIGHTS & HEADLAMPS	45-52
---------------------------	-------

SPECIALIZED LIGHTS	53-54
--------------------	-------

MULTIFUNCTION & SIGNAL LIGHTS	55-64
-------------------------------	-------

ACCESSORIES	65-68
-------------	-------

NEX BATON

QUICKER SERIES	71-73
----------------	-------

WALKER SERIES	74-76
---------------	-------

ACCESSORIES	77-78
-------------	-------

HANDCUFFS	79-80
-----------	-------

MULTI-TOOLS	81-83
-------------	-------

TACTICAL BELTS	84-85
----------------	-------

SAMPLE BAGS	86
-------------	----

MERCHANDIZING DISPLAYS	87-88
------------------------	-------

LIFESTYLE	89
-----------	----

COMPATIBILITY	90-95
---------------	-------

NEXTORCH®

The Professional's Edge



NEXTORCH is one of the world's leading manufacturers of illumination tools and specialized equipment for military, law enforcement, first responders, tactical, and outdoor applications.

Our approach to product development begins with an in-depth understanding of our customers' needs and preferences. Based on that knowledge, we focus our state-of-the-art research and development resources to create the finest high-performance equipment. Through our relentless commitment to product innovation, we have earned more than 150 patents and numerous industry awards. We have also earned the loyalty of professional end users in more than 100 countries.

If you only trust the best, trust NEXTORCH.

MEMBER OF

PLATO®

INDUSTRY AWARDS



reddot award
winner



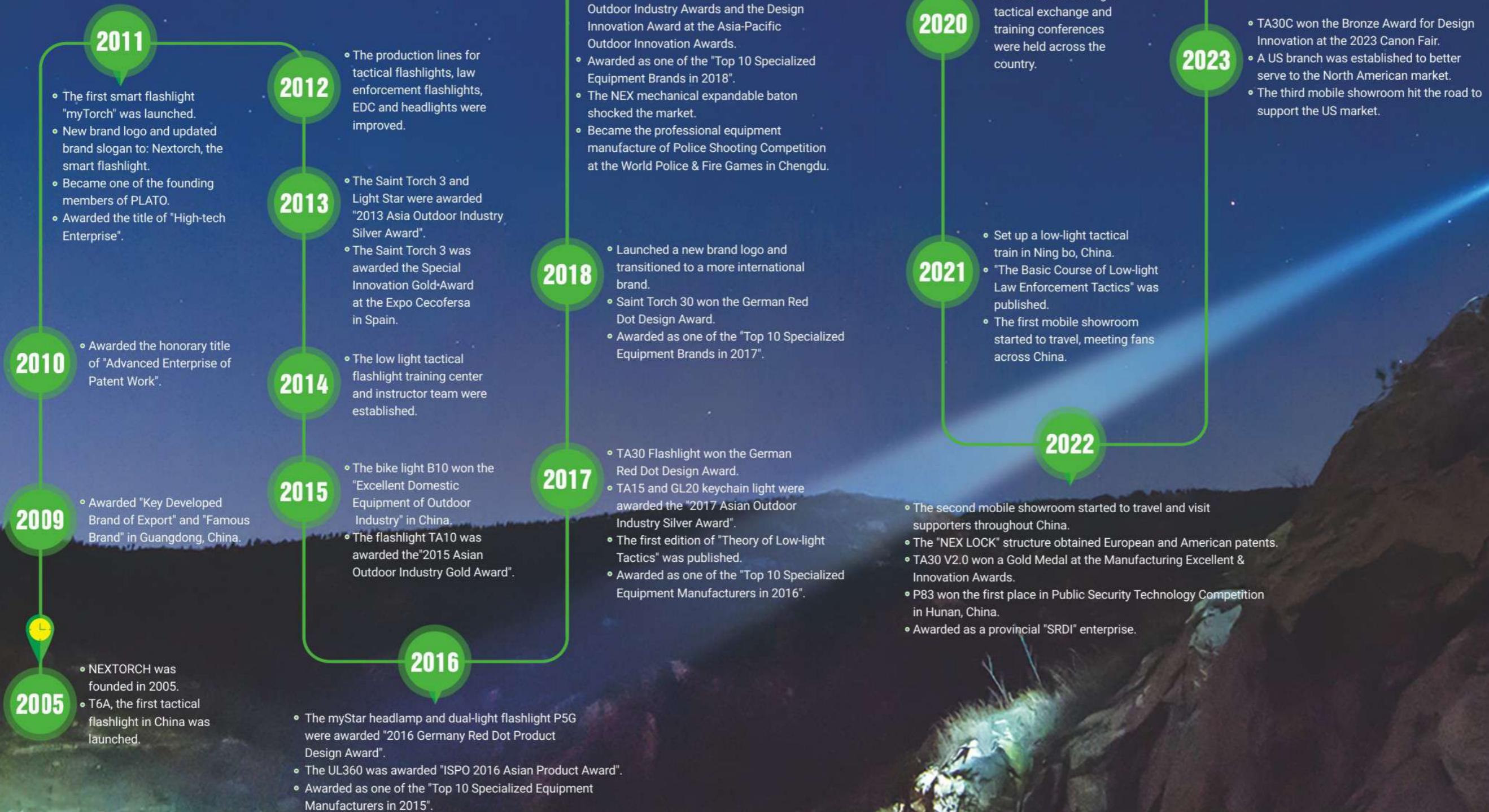
WINNER

2016/2017

ISPO



DEVELOPMENT HISTORY



NEXTORCH EQUIPMENT SOLUTIONS

Head, Shoulder, Chest



UT31 UT30 UT22 UT21 UT11C UT10C UL12 UL10

Chest



P10 TA30C K3RT MT10 MT20 NP20

Head



rStar oStar TA30C



TA15+ RM25S GLO-TOOB + GTK

Waist



V65 V55 / V55L
V51 V35 V10

Waist



TA31 TA30C MAX TA30C TA20 TA15 T10L

Search Light



SAINT TORCH 30C SAINT TORCH 31

Waist



P86 P84 P83 P82 P81 P80

Handgun Lights



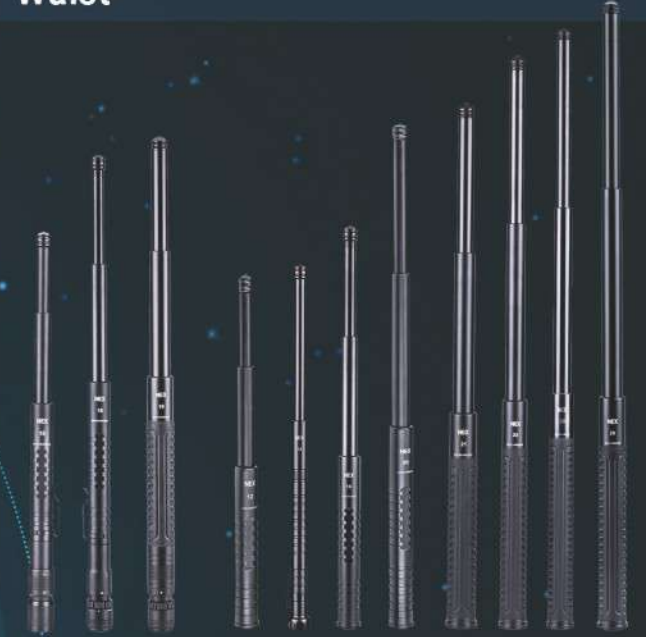
WL11 WL13 WL14
WL21 WL23 WL30 WL22

Long Gun Lights



WL60 WL50 IR

Waist



Flashlight Baton Series Portable Baton Series Duty Baton Series



TB1 HG1 Baton Grip Ring

Waist



V73 V72 V69 V68 V67

Distractor, Shield Light



ND30 (Distractor)



P20 (Shield Light)



SEARCH LIGHTS



Designed to fulfill the demanding needs of search & rescue professionals, these high-powered search lights feature exceptional brightness, superior ergonomics, and enhanced durability making them ideal for any user that needs to illuminate large areas while maintaining portability.



SAINT TORCH 31

20,000 Lumen Ultra Bright Rechargeable Searchlight



SAINT TORCH 30C

15,000 Lumen Ultra Bright Rechargeable Searchlight



20000 LUMENS

-  * HM30 Saint Torch Handle
-  * Waterproof Container
-  * Shoulder Strap
-  * Charger
-  * Carry Bag

- FEATURES**
- * High performance LED produces a maximum 20,000 lumen output for a beam distance of 740 meters
 - * Switchable to six modes: Four brightness levels, strobe, and S.O.S.
 - * Side-mounted switch for easy mode selection
 - * Four LED battery level indicator
 - * Powered by a 6 x 4800 mAh rechargeable battery pack that doubles as a waterproof power bank
 - * Built-in smart sensor detects objects immediately in front of the bezel and automatically dims the light
 - * Includes the HM30 Multipurpose Handle Mount for additional carry and usage options
 - * Includes an accessory kit containing a charger, a shoulder strap, a waterproof case, and a sturdy nylon carry/storage bag



The 6 x 4800 mAh Battery Pack Also Functions as a Power Bank



Includes Protective Carry / Storage Case

Modes	20000 lm / 6000 lm / 1700 lm / 90 lm / Strobe / S.O.S.
Runtime	2 h 15 min / 3 h 30 min / 8 h 30 min / 81 h / - / -
Beam Distance	740 m / 410 m / 212 m / 50 m / - / -
Beam Intensity	138900 cd / 42025 cd / 11236 cd / 625 cd / - / -
Waterproof	IPX7 (1 m)
Impact Resistance	1 m / 3.28 ft
Battery	6 x 4800 mAh rechargeable battery pack (included)
Dimensions	285 mm x 106 mm x 50 mm / 11.22 x 4.17 x 1.97 in
Weight	1500 g / 52.9 oz (with battery)



15000 LUMENS

-  * Nylon Shoulder Strap
-  * 45W Charging Block
-  * USB-C Cable(C2C)
-  * Carrying Case

- FEATURES**
- * High performance LED produces a maximum 15,000 lumen output for a beam distance of 515 meters
 - * Two side-mounted switches for momentary on and easy mode selection
 - * Switchable to six modes: high, medium, low, eco, strobe, and S.O.S
 - * Four LED battery level indicator
 - * High speed 45W USB-C two-way charging design, charges fully in 1h 45mins
 - * Powered by a 3 * 4800 mAh rechargeable battery pack that doubles as a waterproof power bank
 - * Includes an accessory kit containing a carrying case, a nylon shoulder strap, a 45W charging block and a USB-C cable (C2C)



Large Capacity Battery Pack



Optional Accessory HM30 Saint Torch Handle

Modes	15000lm/10000lm/5000lm/1000lm/90lm/Strobe/SOS
Runtime	- / 2 h 45 min / 3 h 45 min / 6 h 30 min / 52 h / - / -
Beam Distance	515 m / 415 m / 290 m / 135 m / 35 m / - / -
Intensidad del Haz	66306 cd / 43056 cd / 21025 cd / 4556 cd / 306 cd
Waterproof	IPX7 (1 m)
Impact Resistance	1 m / 3.28
Battery	3 x 4800 mAh Li-Ion battery pack
Dimensions	202 mm x 84 mm x 50 mm / 7.95 x 3.31 x 1.97 in
Weight	787 g / 27.76 oz (with battery)

TACTICAL & LAW ENFORCEMENT FLASHLIGHTS

Those who put their lives at risk to protect others deserve the very best equipment available. The flashlights in the NEXTORCH Tactical & Police Series were specifically designed to fulfill the demanding needs of law enforcement officers, military personnel, and other armed professionals. Offering unmatched reliability and versatility in low-light and no-light situations, these elite lighting tools are in a class by themselves. When duty calls, the NEXTORCH Tactical & Law Enforcement flashlights answer.





**10000
LUMENS**

TA31

10,000 Lumen Ultra Bright Tactical Searchlight



Patented One-Step-Strobe



10,000 Lumen Ultra Bright High Mode



Waterproof and Dustproof Hidden
USB-C Fast Charging Port



LED Battery Indicator

FEATURES

- * 10,000 lumen ultra high output tactical search light
- * Multi-mode design with magnetically controlled rotary switch to toggle between three modes: Lock, Duty, and Tac
- * In Tac Mode, patented One-Step-Strobe tail switch utilizes a half -press for momentary high mode and full-press for strobe
- * Proximity Sensor detects objects within 3ft and automatically reduces output to reduce reflection and fire hazard
- * Supports USB-C fast charging, and fully charges in 2.5 hours
- * Utilizes a 2 x 4800 mAh Li-ion battery pack

Modes	10000 lm / 6000 lm / 1500 lm / 320 lm / 20 lm
Runtime	- / 3 h 30min / 5 h / 15 h / 170 h
Beam distance	- / 380 m / 290 m / 145 m / 65 m / 15 m
Beam Intensity	36100 cd / 21025 cd / 5256 cd / 1056 cd / 42 cd
Water Resistance	IPX8 (2 m)
Impact Resistance	2 m
Battery	2 x 4800 mAh Li-ion battery pack
Dimensions	156 mm x 53 mm x 49 mm / 6.14 x 2.09 x 1.93 in
Weight	425 g / 14.99 oz (with battery)



TA30C MAX

3,000 Lumen Ultra Bright One-Step-Strobe Tactical Flashlight



Patented One-Step-Strobe Switch



Nano-Ceramic Window Breaker

3000 LUMENS

FEATURES

- * High performance LED produces a maximum 3,000 lumen output for a beam distance of 390 meters
- * Patented One-Step-Strobe tail switch utilizes a half-press for momentary high-mode and full-press for strobe
- * Rotating magnetic tail cap dial allows easy one-handed mode selection
- * Stainless steel bezel face includes nano-ceramic glass-breaker strike points
- * LED battery level indicator
- * Powered by 1 x 21700 rechargeable battery (included) with USB-C direct charging

Modes	3000 lm / 520 lm / 70 lm / Momentary On / Strobe
Runtime	2 h 45 min / 5 h / 35 h / - / -
Beam Distance	390 m / 160 m / 60 m / - / -
Beam Intensity	38025 cd / 6400 cd / 900 cd / - / -
Water Resistance	IPX8 (2 m)
Impact Resistance	2 m / 6.56 ft
Battery	1 x 21700 rechargeable battery
Dimensions	153 mm x 38 mm x 28 mm / 6.02 x 1.50 x 1.10 in
Weight	153 g / 5.39 oz (without battery)



TA20

1,000 Lumen Tri-Mode Tactical Flashlight



Tri-Mode Operation (Lock, Tac and Duty)



Patented One-Step-Strobe Switch

1000 LUMENS

FEATURES

- * Ultra-compact tactical/duty flashlight offers exceptional performance for its size
- * Tri-mode operation instantly switches between lock, tactical, and duty settings
- * High performance LED produces a maximum 1,000 lumen output for a beam distance of 210 meters
- * Rotating dial built into the flashlight head allows easy one-handed mode selection
- * Switchable to seven modes: lock, two tactical modes (momentary on and tactical strobe), and four duty modes (three brightness levels and strobe)
- * Patented one-step-strobe switch provides momentary on with a half-press and strobe mode with a full-press (in tactical mode)
- * Stainless steel bezel face includes nano-ceramic glass-breaker strike points
- * Powered by 1 x 16340 rechargeable battery (included) or 1 x CR123A battery

Modes	1000 lm / 190 lm / 24 lm / Momentary On / Strobe
Runtime	1 h 15 min / 2 h 30 min / 24 h / - / -
Beam Distance	210 m / 85 m / 30 m / - / -
Beam Intensity	11028 cd / 1808 cd / 228 cd / - / -
Water Resistance	IPX8 (2 m)
Impact Resistance	2 m / 6.56 ft
Battery	1 x 16340 rechargeable battery or 1 x CR123A
Dimensions	100 mm x 30 mm x 23 mm / 3.94 x 1.18 x 0.91 in
Weight	89 g / 3.14 oz (without battery)



TA30C

1,600 Lumen High Output One-Step-Strobe Tactical Flashlight



Patented One-Step-Strobe Switch



Rotating Magnetic Mode-Selection Dial

1600 LUMENS

FEATURES

- * High performance LED produces a maximum 1,600 lumen output for a beam distance of 303 meters
- * Patented One-Step-Strobe tail switch utilizes a half-press for momentary high mode and full-press for strobe
- * Rotating magnetic tail cap dial allows easy one-handed mode selection
- * Stainless steel bezel face includes nano-ceramic glass-breaker strike points
- * LED battery level indicator
- * Powered by 1 x 18650 rechargeable battery (included) or 2 x CR123A batteries

Modes	1600 lm / 330 lm / 20 lm / Momentary On / Strobe
Runtime	2 h 30 min / 4 h 30min / 50 h / - / -
Beam Distance	303 m / 130 m / 24 m / - / -
Beam Intensity	22952 cd / 4225 cd / 144 cd / - / -
Water Resistance	IPX8 (2 m)
Impact Resistance	2 m / 6.56 ft
Battery	1 x 18650 rechargeable battery or 2 x CR123A
Dimensions	136 mm x 30 mm x 23 mm / 5.35 x 1.18 x 0.91 in
Weight	97 g / 3.42 oz (without battery)



TA15 V2.0

700 Lumen High Output Multi-Battery Tactical Flashlight



Compatible with CR123A, AA, 14500, and 16340 Batteries



Winner of the Asia Outdoor Industry Silver Award Nano-ceramic Strike Bezel

700 LUMENS

FEATURES

- * High performance LED produces a maximum 700 lumen output for a beam distance of 195 meters
- * Vari-Source design is compatible with AA, CR123A, 14500 rechargeable, and 16340 rechargeable batteries
- * Switchable to five modes: Off, three brightness levels, and a strobe
- * Patented one-step-strobe switch provides momentary on with a half-press and strobe mode with a full-press (in tactical mode)
- * Rotating magnetic tail cap dial allows easy one-handed mode selection
- * Stainless steel bezel face includes nano-ceramic glass-breaker strike points
- * Compact size and pocket clip for convenient carry

Modes	700 lm / 205 lm / 35 lm / Momentary On / Strobe
Runtime	30 min / 1 h 30 min / 2 h 15 min / - / -
Beam Distance	195 m / 100 m / 35 m / - / -
Beam Intensity	9506 cd / 2500 cd / 306 cd / - / -
Water Resistance	IPX8 (2 m)
Impact Resistance	2 m / 6.56 ft
Battery	1 x 14500 / 16340 / CR123A / AA battery
Dimensions	127 mm x 30 mm x 22 mm / 5.00 x 1.18 x 0.87 in
Weight	95 g / 3.35 oz (without battery)





P86

1,600 Lumen Flashlight with 120 dB Electronic Whistle

1600 LUMENS



120 Decibel Electronic Whistle



Nano-Ceramic Strike Bezel



Two Independent Switches



USB-C Direct Charge

FEATURES

- * Electronic whistle + flashlight
- * 120 decibel electronic whistle
- * Maximum 1600 lumen output for a beam distance of 305 meters
- * Equipped with a 18650 lithium-ion battery
- * Stainless steel bezel includes nano-ceramic glass-breaker strike points
- * Hidden USB-C charging port is waterproof and dustproof
- * LED battery-level indicator

Modes	1600 lm / 240 lm / 25 lm / Momentary On
Runtime	2 h 15 min / 6 h 30 min / 60 h / -
Beam Distance	305 m / 110 m / 35 m / -
Beam Intensity	23256 cd / 3025 cd / 306 cd / -
Sound Pressure Level	120 dB
Water Resistance	IPX7 (1 m)
Impact Resistance	2 m
Battery	1 x 18650 rechargeable battery
Dimensions	160 mm x 37 mm x 28 mm / 6.29 x 1.46 x 1.10 in
Weight	191 g / 6.73 oz (without battery)



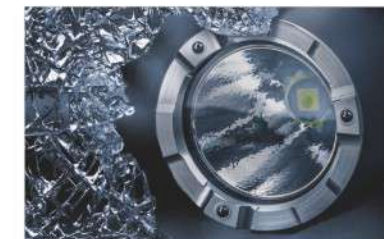
P84

3,000 Lumen Rechargeable Flashlight with Red and Blue Emergency Functions

3000 LUMENS



Red and Blue Signal Functions



Nano-Ceramic Strike Bezel

FEATURES

- * Maximum 3000 lumen output for a beam distance of 260 meters
- * Three LED light sources: white, red, and blue
- * Provides four white light modes: Three brightness levels and strobe
- * Provides five red/blue LED modes: Solid red, solid blue, red flashing, blue flashing, and red & blue flashing
- * Stainless steel bezel face includes nano-ceramic glass-breaker strike points
- * Hidden, waterproof USB-C charging port
- * LED battery level indicator

Modes	3000 lm / 600 lm / 36 lm / 2 lm (Red & Blue Flash) / 2 lm (Red Flash) / 2 lm (Blue Flash) / 2 lm (Red Light) / 2 lm (Blue Light) / Strobe
Runtime	2 h 45 min / 4 h 30 min / 60 h / 180 h / 105 h / 105 h / 50 h / -
Beam Distance	260 m / 118 m / 28 m / - / - / - / - / - / -
Beam Intensity	17000 cd / 3520 cd / 204 cd / - / - / - / - / - / -
Water Resistance	IPX7 (1 m)
Impact Resistance	2 m / 6.56 ft
Battery	1 x 21700 rechargeable battery
Dimensions	160 mm x 35 mm x 28.5 mm / 6.30 x 1.38 x 1.12 in
Weight	164 g / 5.78 oz (without battery)



P83

1,300 Lumen Rechargeable Flashlight with Red and Blue Emergency Functions

1300 LUMENS



Red and Blue Signal Functions



Nano-Ceramic Strike Bezel

FEATURES

- * Maximum 1300 lumen output for a beam distance of 280 meters
- * Three LED light sources: white, red, and blue
- * Provides four white light modes: Three brightness levels and strobe
- * Provides five red/blue LED modes: Solid red, solid blue, red flashing, blue flashing, and red & blue flashing
- * Stainless steel bezel face includes nano-ceramic glass-breaker strike points
- * Hidden, waterproof USB-C charging port
- * Four LED battery level indicator

Modes	1300 lm / 350 lm / 25 lm / strobe / 2 lm Red & Blue Flash / 2 lm Red Flash / 2 lm Blue Flash / 2 lm Red Light / 2 lm Blue Light
Runtime	2 h / 4 h 30 min / 60 h / - / 35 h / 50 h / 50 h / 25 h / 25 h
Beam Distance	280 m / 140 m / 35 m / - / - / - / - / - / -
Beam Intensity	20000 cd / 4900 cd / 300 cd / - / - / - / - / - / -
Water Resistance	IPX7 (1 m)
Impact Resistance	2 m / 6.56 ft
Battery	1 x 18650 rechargeable battery
Dimensions	155 mm x 35 mm x 28.5 mm / 6.10 x 1.38 x 1.12 in
Weight	177 g / 6.24 oz (without battery)





P82

1,200 Lumen Ultra Long Range Rechargeable Flashlight



Dual Side Switches



LED Battery Level Indicator

1200 LUMENS

FEATURES

- * High Optical Density (HOD) LED creates a maximum 1200 lumen output for a beam distance of 1100 meters
- * Ideal for long range applications
- * Provides four white light modes: Three brightness levels and strobe
- * Side Strobe activation and mode selection switches
- * Stainless steel bezel includes nano-ceramic glass-breaker strike points
- * Powered by 1 x 21700 rechargeable battery with USB-C charging port
- * LED battery level indicator

Modes	1200 lm / 425 lm / 33 lm / Momentary On / Strobe
Runtime	3 h 30 min / 4 h 30 min / 85 h / - / -
Beam Distance	1100 m / 645 m / 181 m / - / -
Beam Intensity	302500 cd / 104000 cd / 8190 cd / - / -
Water Resistance	IPX7 (1 m)
Impact Resistance	1 m / 3.28 ft
Battery	1 x 21700 rechargeable battery
Dimensions	188.3 mm x 60.8 mm x 28.5 mm / 7.41 x 2.39 x 1.12 in
Weight	276 g / 9.74 oz (without battery)

P80

1,600 Lumen One-Step-Strobe Rechargeable Flashlight



USB-C Direct Charging

Optional Accessories



Traffic Wand Attachment V51 Quick-Draw Holster

1600 LUMENS

FEATURES

- * High performance LED creates a maximum 1600 lumen output for a beam distance of 300 meters
- * Provides four white light modes: Three brightness levels and strobe
- * Side strobe activation and mode selection switches
- * Stainless steel bezel includes nano-ceramic glass-breaker strike points
- * Powered by 1 x 18650 rechargeable battery with USB-C direct charging port
- * LED battery level indicator

Modes	1600 lm / 350 lm / 25 lm / Momentary On / Strobe
Runtime	2 h / 4 h 30 min / 60 h / - / -
Beam Distance	300 m / 135 m / 35 m / - / -
Beam Intensity	22500 cd / 4556 cd / 306 cd / - / -
Water Resistance	IPX7 (1 m)
Impact Resistance	2 m / 6.56 ft
Battery	1 x 18650 rechargeable battery
Dimensions	155 mm x 35 mm x 28.5 mm / 6.10 x 1.38 x 1.12 in
Weight	177 g / 6.24 oz (without battery)



P81

3,000 Lumen One-Step-Strobe Rechargeable Flashlight



USB-C Direct Charging

Optional Accessories



Traffic Wand Attachment V51 Quick-Draw Holster

3000 LUMENS

FEATURES

- * High performance LED creates a maximum 3000 lumen output for a beam distance of 270 meters
- * Provides four white light modes: Three brightness levels and strobe
- * Side strobe activation and mode selection switches
- * Stainless steel bezel includes nano-ceramic glass-breaker strike points
- * Powered by 1 x 21700 rechargeable battery with USB-C direct charging port
- * LED battery level indicator

Modes	3000 lm / 600 lm / 36 lm / Momentary On / Strobe
Runtime	2 h 45 min / 4 h 30 min / 60 h / - / -
Beam Distance	270 m / 118 m / 28 m / - / -
Beam Intensity	18225 cd / 3481 cd / 196 cd / - / -
Water Resistance	IPX7 (1 m)
Impact Resistance	2 m / 6.56 ft
Battery	1 x 21700 rechargeable battery
Dimensions	161 mm x 35 mm x 28.5 mm / 6.34 x 1.38 x 1.12 in
Weight	174 g / 6.13 oz (without Battery)

P8

1,300 Lumen High Output Rechargeable Flashlight



Compact Design



Includes Removeable Lanyard

1300 LUMENS

FEATURES

- * High performance LED creates a maximum 1300 lumen output for a beam distance of 240 meters
- * Provides four white light modes: Three brightness levels and strobe
- * Side strobe activation and mode selection switches
- * Stainless steel bezel includes nano-ceramic glass-breaker strike points
- * Powered by 1 x 18650 rechargeable battery with USB-C direct charging port
- * LED battery level indicator

Modes	1300 lm / 350 lm / 25 lm / Momentary On / Strobe
Runtime	2 h / 4 h 30 min / 60 h / - / -
Beam Distance	240 m / 115 m / 30 m / - / -
Beam Intensity	14400 cd / 3306 cd / 225 cd / - / -
Water Resistance	IPX7 (1 m)
Impact Resistance	2 m / 6.56 ft
Battery	1 x 18650 rechargeable battery
Dimensions	140 mm x 28 mm x 24 mm / 5.51 x 1.10 x 0.94 in
Weight	140 g / 4.93 oz (with battery)



P56

6-LED Forensic Flashlight Kit



Impact Resistance	1 m / 3.28 ft
Water Resistance	IPX8 (2m)
Battery	1 x 18650 or 2 x CR123A batteries
Weight	190 g / 6.7 oz (without battery)
Dimensions	166 mm x 36.6 mm x 27.3 mm / 6.54 x 1.44 x 1.07 in
Material	Aluminum Alloy

300 LUMENS

FEATURES

- * Provides six light wavelengths: white, blue, red, green, infrared (IR), and ultraviolet (UV)
- * Provides uniform illumination for forensic photography
- * Side-mounted rotary switch for easy one-handed mode selection
- * Powered by 1 x 18650 rechargeable battery with USB-C direct charging port
- * Includes transport case, chargers, and red, amber, and yellow forensic safety glasses

Model	WHITE		UV		BLUE	
Wavelength	—		365 nm		450 nm	
Modes	300lm	11lm	76 mW	7 mW	18lm	3lm
Beam Distance	110m	21m	—	—	16m	6m
Runtime	3h 45min	36h	5h	40h	7h 30min	35h
Beam Intensity	3025 cd	110 cd	—	—	—	—

Model	GREEN		RED		IR	
Wavelength	525 nm		630 nm		850 nm	
Modes	40lm	8lm	35lm	8lm	150mW	32mW
Beam Distance	41m	17m	40m	17m	—	—
Runtime	8h 30min	39h	4h 30min	22h	7h 45min	19h



LEP LASER LIGHTS



P10

1,400 Lumen with Signal Mode Right-Angle Flashlight



Two Independent Switches



Three LED Light Sources

FEATURES

- * Maximum 1400 lumen white light output for a beam distance of 200 meters
- * Compact, right-angle design and pocket clip for hands-free, on-body wear
- * Three LED light sources: white, red, and blue
- * Two independent switches control white light and red/blue LED functions
- * Provides four white light modes: Three brightness levels and strobe
- * Provides three red/blue LED modes: Red & Blue Flash, Red Beacon, and Blue Beacon

Modes	1400 lm / 200 lm / 25 lm / Momentary On / Strobe / Red & Blue Flash / Red Beacon / Blue Beacon
Runtime	3 h 30 min / 6 h / 55 h / — / — / 80 h / — / —
Beam Distance	200 m / 70 m / 26 m / — / — / — / — / —
Beam Intensity	10000 cd / 1220 cd / 169 cd / — / — / — / — / —
Water Resistance	IPX8 (2m)
Impact Resistance	2 m / 6.56 ft
Battery	1 x 18650 rechargeable battery
Dimensions	117.2 mm x 24 mm x 32.1 mm / 4.61 x 0.94 x 1.26 in
Weight	91 g / 3.21 oz (without battery)

1400 LUMENS



T10L

1,400 Meter Long Range Tactical Flashlight

1400 METERS

FEATURES

- * Specifically designed for long distance and focused beam long distance
- * Laser Excited Phosphor (LEP) white light emitter and precision lenses achieve a maximum 1400 meter beam distance
- * Switchable to five modes: Off, three brightness levels, and a strobe
- * Patented one-step-strobe switch provides momentary on with a half-press and strobe mode with a full-press (in tactical mode)
- * Rotating magnetic tail cap dial allows easy one-handed mode selection
- * Stainless steel bezel includes nano-ceramic glass-breaker strike points
- * Powered by 1 x 21700 rechargeable battery (included)



Magnetic Mode-Selection Dial and One-Step-Strobe Switch



Rechargeable 21700 Battery



V51 Quick-Draw Holster

FR-2 Tactical Flashlight Ring

Modes	520 lm / 155 lm / 65 lm / Momentary On / Strobe
Runtime	3 h 30 min / 5 h / 8 h 30 min / — / —
Beam Distance	1400 m / 780 m / 450 m / — / —
Beam Intensity	495000 cd / 150000 cd / 62500 cd / — / —
Water Resistance	IPX7 (1 m)
Impact Resistance	1 m / 3.28 ft
Battery	1 x 21700 rechargeable battery
Dimensions	162 mm x 38.4 mm x 27.5 mm / 6.38 x 1.51 x 1.08 in
Weight	185 g / 6.52 oz (without battery)

OUTDOOR & EVERYDAY CARRY LIGHTS

Compact, convenient, and easy to operate, NEXTORCH's Outdoor & Everyday Carry lights offer incredible illumination in a pocket friendly design. These ultimate everyday carry and easy-to-operate lighting tools are ideal for both personal and professional use.



3000 LUMENS

E52C

High Output Rechargeable EDC Pocket Flashlight



Metal Tail Switch



IPX8 Submersible

FEATURES

- * Max output up to 3000 lumens
- * Single switch with 4 modes for simple operation
- * Powered by 1 × 21700 rechargeable battery
- * Hidden USB-C design, economical and convenient
- * Optional accessories for more flexible applications: FR-2/ V51/ V61

Modes	3000 lm / 550 lm / 30 lm / Strobe
Runtime	2 h 30 min / 4 h 15min / 65 h / –
Beam Distance	210 m / 100 m / 25 m / –
Beam Intensity	11025 cd / 2500 cd / 156 cd / –
Submersible	IPX8 (2 m)
Impact Resistance	2 m / 6.56 ft
Battery	1 × 21700 rechargeable battery
Dimensions	153 mm × 30 mm × 27 mm / 6.02 × 1.18 × 1.06 in
Weight	130 g / 4.58 oz (without battery)



1600 LUMENS

E51C

1,600 Lumen High Performance Rechargeable EDC Flashlight



One-Step-Strobe Design



USB-C Rechargeable

FEATURES

- * High performance LED produces a maximum 1,600 lumen output for a beam distance of 205 meters
- * Switchable to four modes: Three brightness levels, and a strobe
- * LED battery level indicator
- * Hidden USB-C charging port
- * Powered by 1 × 18650 rechargeable battery (included)

Modes	1600 lm / 340 lm / 28 lm / Strobe
Runtime	2 h 30 min / 4 h 15 min / 43 h / –
Beam Distance	205 m / 102 m / 25 m / –
Beam Intensity	10506 cd / 2601 cd / 156 cd / –
Water Resistance	IPX8 (2 m)
Impact Resistance	2 m / 6.56 ft
Battery	1 × 18650 rechargeable battery
Dimensions	139 mm × 27 mm × 23 mm / 5.47 × 1.06 × 0.91 in
Weight	94 g / 3.31 oz (without battery)





250 LUMENS

C2 UV

Compact Ultraviolet Flashlight

FEATURES

- * Dedicated UV flashlight for specialized applications
- * 405nm UV LED light source is invisible to the naked eye, but causes specific materials to illuminate
- * Durable aluminum construction is IPX7 rated to be waterproof to a depth of one meter
- * Compact, lightweight, and easily carried
- * Powered by 2 × AA batteries
- * Lanyard included



Detect Invisible Stains

Detect Counterfeits

IPX7 Waterproof

Light Source	UV LED
Wavelength	405 nm
Power Output	500 mW
Impact Resistance	1 m / 3.28 ft
Waterproof	IPX7 (1 m)
Battery	2 × AA batteries (included)
Dimensions	151 mm × 26 mm × 19 mm / 5.94 × 1.02 × 0.75 in
Weight	72 g / 2.53 oz (without batteries)

C1 / C2

Compact Flashlight

FEATURES

- * Machined from aerospace quality aluminum with a durable Type III hard-anodized finish
- * Tail cap switch allows easy activation and mode selection
- * Compact, lightweight, and easily carried
- * Powered by 1 × AA battery (C1) / 2 × AA Batteries (C2)
- * Lanyard included

140 LUMENS



	C1	C2
Modes	140 lm / 20 lm	250 lm / 70 lm
Runtime	1 h / 13 h	1 h / 40 h
Beam Distance	86 m / 30 m	120 m / 60 m
Beam Intensity	1849 cd / 225 cd	3600 cd / 900 cd
Waterproof	IPX7 (1 m)	IPX7 (1 m)
Impact Resistance	1 m / 3.28 ft	1 m / 3.28 ft
Battery	1 × AA battery (included)	2 × AA battery (included)
Dimensions	102 mm × 19.2 mm × 26.4 mm / 4.02 × 0.76 × 1.04 in	152 mm × 19.2 mm × 26.4 mm / 5.98 × 0.76 × 1.04 in
Weight	50 g / 1.76 oz (without battery)	70 g / 2.47 oz (without batteries)

KEYCHAIN & PEN LIGHTS

Incredibly lightweight and convenient, the lights in the NEXTORCH Keychain & Pen lights are the perfect EDC (everyday carry) lighting tools. They are as easy to carry as a pen or a pencil yet produce light output comparable to flashlights many times their size.



K40

300 Lumen Multifunction Rechargeable Keychain Light



Modes	300 lm / 50 lm / 10 lm / Strobe
Runtime	1 h / 1 h 30 min / 9 h 15 min / -
Beam Distance	78 m / 30 m / 12 m / -
Beam Intensity	1520 cd / 232 cd / 40 cd / -
Water Resistance	IPX4
Impact Resistance	1 m / 3.28 ft
Battery	Built-in 180 mAh rechargeable battery
Dimensions	73 mm x 16.5 mm x 16.5 mm / 2.87 x 0.65 x 0.65 in
Weight	17 g / 0.60 oz

FEATURES

- * Ultra-compact multifunction light small enough for keychain carry
- * Includes four LED light sources: White, red, blue, and ultraviolet (UV)
- * Maximum 300 lumen output for a beam distance of 78 meters
- * Features three white light brightness levels, strobe, and red, blue, and UV light solid and flashing modes
- * Independent mode switches
- * Built-in 180 mAh rechargeable battery with USB-C direct charging port



K3 SERIES

K3RT Rechargeable Penlight

- Memory Mode: 2 seconds after turning off, turn on again to enter the last mode
- Charging via the hidden USB-C direct charging port
- Pen-like compact size, convenient for everyday carry
- Equipped with a stainless-steel clip
- Chrome-plated anti-skid press switch
- Embedded with high-hardness ceramic beads for window breaking and defense

K3 v2.0 EDC Penlight

- High performance LED produces a maximum 250-lumen output
- Provides three brightness levels and strobe
- Programmable memory mode
- Compact pen-sized design with a sturdy pocket clip
- Powered by 2 x AAA batteries (included)



Model	K3RT
Modes	330 lm / 65 lm / 9 lm / strobe
Runtime	45 min / 2 h / 11 h / -
Beam Distance	70 m / 30 m / 12 m / -
Beam Intensity	1225 cd / 225 cd / 36 cd / -
Waterproof	IPX7(1m)
Impact Resistance	1 m / 3.28 ft
Battery	Built-in 320mAh li-ion battery
Dimensions	125mm x 12.9 mm x 14.3 mm / 4.92 x 0.51 x 0.56 in
Weight	37 g / 1.31 oz (without batteries)

Model	K3 v2.0
Modes	250 lm / 80 lm / 10 lm / strobe
Runtime	1 h / 2 h 45 min / 20 h / -
Beam Distance	60 m / 35 m / 12 m / -
Beam Intensity	900 cd / 306 cd / 36 cd / -
Waterproof	IPX7(1m)
Impact Resistance	1 m / 3.28 ft
Battery	2 x AAA batteries (included)
Dimensions	150 mm x 14 mm x 12 mm / 5.91 x 0.55 x 0.47 in
Weight	27.6 g / 0.97 oz (without batteries)



Dr.K3 SERIES

Dr.K3UV, Dr.K3L/Dr.K3S, Dr.K3 Pro

- Blue light hazard class RG0 (Risk Exempted)
- High color rendering index, RA > 90, with true tissue color rendition
- Uniform light spot design for better observation
- Pen-size with a stainless clip
- Chrome-plated anti-skid tail switch, to ensure the normal use even when wearing gloves



	Dr.K3 Pro			Dr.K3L			Dr.K3S		Dr.K3 UV
Light Source	Dual Light (Yellow & White)			Dual Light (Yellow & White)			LED (Yellow / Neutral White)		365 nm UV LED
Color Rendering Index (RA)	≥ 95			≥ 95			≥ 95		—
Blue-light Hazard Rate	RG0 (Yellow)			RG0 (Yellow)			RG0		—
Color Temperature (CCT)	3000K (Yellow)	5500K (White)	—	3000K (Yellow)	5500K (White)	—	3000 K (Yellow)		—
Modes	2 lm	10 lm	80 lm	2 lm	10 lm	75 lm	5000 K (Neutral White)		Power Output:600 mW
Runtime	19 h	5 h 30 min	55 min	42 h	15 h	1 h 30 min	55 h		1 h 15 min
Beam distance	5 m	10 m	28 m	7 m	15 m	40 m	—		—
Waterproof	IPX7 (1 m)			—			—		—
Impact resistance	1 m / 3.28 ft			1 m / 3.28 ft			—		1 m / 3.28 ft
Battery	Built-in 320 mAh lithium battery			2 x AAA batteries (included)			1 x AAA (included)		2 x AAA batteries
Dimensions	129.6 mm x 14.3 mm x 12.9 mm / 5.10 x 0.56 x 0.51 in			149.8 mm x 14.3 mm x 13.3 mm / 5.90 x 0.56 x 0.52 in			105 mm x 14.3 mm / 4.13 x 0.56 in		148 mm x 14.3 mm x 13.3 mm / 5.82 x 0.56 x 0.52 in
Weight	39.7 g / 1.4 oz (with battery)			27.8 g / 0.98 oz (without battery)			18.7 g / 0.66 oz (without battery)		28 g (without batteries)

WEAPON LIGHTS

Modern tactical situations require positive target identification and split-second decision making under incredibly challenging circumstances. Built to meet the demanding needs of armed professionals, NEXTORCH weapon-mounted lights offer intense white light, infrared illumination, and high-visibility laser sighting for all types of firearms. Dominate the darkness with NEXTORCH weapon lights.



Compact handgun



WL11
White light
650
LUMENS



WL21R
Red laser
650
LUMENS



WL21G
Green laser
650
LUMENS



WL21 IR
Infrared laser
350
mW



WL14
White light
500
LUMENS



WL22R
Red laser
650
LUMENS



WL22G
Green laser
650
LUMENS



WL30
White light + Dual laser
400
LUMENS

Full Size handgun and long gun



WL13
White light
1300
LUMENS



WL23G
Green laser
1300
LUMENS

Long gun



WL60
White light + Laser
700
LUMENS



WL50 IR
White light + IR
860
LUMENS



WL60

Dual-Function Weapon Light / Green Laser Sight



700
LUMENS

FEATURES

- * Combines a high-intensity 700 lumen white light with a 5 mW green laser
- * Remote switch design allows selective use of white light and laser
- * Switchable white light modes include high and low output and a choice of momentary, constant on, and strobe functions
- * Quickly attaches to all standard Picatinny rails without the use of tools
- * Powered by either a 1 x 18650 rechargeable battery (included) or 2 x CR123A batteries



Multifunction Remote Switch



White Light and Green Laser



Attaches/Detaches without Tools

Modes	White (High)	White (Low)	Green Laser
Runtime	1 h 30 min	12 h	40 h
Beam Distance	320 m	122 m	—
Beam Intensity	25600 cd	3721 cd	—

Impact Resistance	2 m / 6.56 ft
Waterproof	IPX7 (1 m)
Battery	1 x 18650 rechargeable battery or 2 x CR123A
Weight	219 g / 7.73 oz (with battery)
Dimensions	116 mm x 72 mm x 33 mm / 4.57 x 2.83 x 1.30 in

WL50 IR

Universal Rail-Mounted White Light / IR Weapon Light



860
LUMENS

FEATURES

- * Combines high-intensity white light and infrared (IR) illumination in a single weapon light
- * Switchable to four modes: Three brightness levels of white light and one level infrared illumination
- * Patented head design rotates to instantly switch between white light and IR
- * Remote switch allows momentary and constant on operation
- * Quickly attaches to all standard Picatinny rails without the use of tools
- * Made of aerospace aluminum with a Type III hard-anodized finish
- * Powered by 2 x CR123A batteries (included) or 1 x 18650 rechargeable battery



Rotate to Select Light Sources



White Light and Infrared



Attaches/Detaches without Tools

Light Source	LED				
	Battery	White Light			IR Light
Modes	2 x CR123A	High 860 lm	Medium 330 lm	Low 140 lm	400 mW
	1 x 18650	High 750 lm	Medium 360 lm	Low 150 lm	380 mW
Runtime	2 x CR123A	1 h 30 min / 2 h 30 min / 5 h 30 min			4 h
	1 x 18650	3 h 15 min / 5 h 15 min / 9 h 45 min			5 h 15 min

Beam Distance	2 x CR123A	290 m / 951 ft
	1 x 18650	260 m / 853 ft
Waterproof	IPX7 (1 m)	
Impact Resistance	1 m / 3.28 ft	
Shock Resistance	500 G	
Battery	2 x CR123A (included) / 1 x 18650	
Dimension	159 mm x 42 mm x 40 mm / 6.26 x 1.65 x 1.57 in	
Weight	195 g / 6.87 oz (without batteries)	



WL23G

1,300 Lumen Ultra Bright Weapon Light / Laser Combo



1300 LUMENS



Ambidextrous White Light Switch and Side Laser Switches



Attaches to Picatinny and Glock Rails without Tools

FEATURES

- * Provides 1,300 lumen high-intensity white light and a 5 mW red or green laser (separate models)
- * Patented mounting system quickly attaches to Picatinny and Glock rails without the use of tools
- * Ambidextrous rocker switch allows easy activation of the white light
- * Separate side switch selectively activates lasers
- * Powered by 2 x CR123A batteries (included) or 2 x 16340 rechargeable batteries

Model	WL23G	
Light Source	White Light	Green Laser
Modes	1300 lm	< 5 mW
Runtime	3 h 15 min	43 h
Beam Distance	180 m	-
Beam Intensity	8100 cd	-
Impact Resistance	1 m / 3.28 ft	
Waterproof	IPX4	
Battery	2 x CR123A(included) or 2 x 16340 rechargeable batteries	
Dimensions	82 mm x 36 mm x 49 mm / 3.23 x 1.42 x 1.93 in	
Weight	108 g / 3.80 oz (without batteries)	

WL30

3-in-1 Multifunction Weapon Light / Laser Combo



400 LUMENS



Bi-paddle White Light Triggers and Side Laser Switches



Three Light Sources



Compact and Lightweight



Battery Level Indicator

Light Source	White Light	Green Laser	IR Laser
Modes	400 lm	< 5 mW	< 5 mW
Runtime	1 h 30 min	10 h	24 h
Beam Distance	110 m	-	-
Beam Intensity	3025 cd	-	-
Impact Resistance	1 m / 3.28 ft		
Water Resistance	IPX4		
Battery	1 x CR123A (included)		
Dimensions	80 mm x 40 mm x 45 mm / 3.15 x 1.57 x 1.77 in		
Weight	115 g / 4.05 oz (without battery)		

FEATURES

- * Combines high-intensity white light, a visible green laser, and an infrared (IR) laser in a single weapon light
- * Quickly attaches to all Picatinny or Glock rails without the use of tools
- * Ambidextrous Bi-paddle switch allows easy activation of the white light
- * Separate side switches selectively activate the green and IR lasers
- * Windage and elevation adjustments allow precise alignment of both lasers

WL13

1,300 Lumen Ultra Bright Weapon Light



1300 LUMENS



Ambidextrous rocker Switch for Easy Momentary On and Constant On



Accepts Optional Remote Switch

FEATURES

- * Produces ultra bright 1300 lumen white light with a 180 m beam distance
- * Ambidextrous rocker switch for momentary or constant on illumination
- * Patented mounting system allows quick attachment to Picatinny or Glock rails
- * Accepts optional remote switches for use on long guns
- * Powered by 2 x CR123A batteries

	Momentary on	Constant on
Modes	1300 lm	1300 lm
Runtime	-	3 h 15 min
Beam Distance	180 m	180 m
Beam Intensity	8100 cd	8100 cd
Impact Resistance	1 m / 3.28 ft	
Water Resistance	IPX7 (1 m)	
Battery	2 x CR123A / 2 x 16340	
Dimensions	82 mm x 36 mm x 39 mm / 3.23 x 1.42 x 1.54 in	
Weight	89 g / 3.13 oz (without batteries)	

WL21R/G/IR

2-in-1 Weapon Light / Laser Combo (Red, Green, or Infrared)



650 LUMENS

FEATURES

- * Combines high-intensity white light and a visible red or green laser, or infrared (IR) illumination and an IR laser (separate models)
- * Patented independent white light and laser switches
- * Ambidextrous rocker white light switch for momentary or constant on illumination
- * Separate side switches activate the laser
- * Patented mounting system allows quick, one-handed attachment to Picatinny or Glock rails
- * Windage and elevation adjustments allow precise alignment of laser
- * Powered by 1 x 16340 rechargeable battery (included) or 1 x CR123A battery

Model	WL21R		WL21G		WL21IR	
Light Source	White Light	Red Laser	White Light	Green Laser	IR Light	IR Laser
Modes	650 lm	< 5 mW	650 lm	< 5 mW	350 mW	< 5 mW (650 nm)
Runtime	1 h 30 min	15 h	1 h 30 min	10 h	6 h	30 h
Beam Distance	130 m	-	130 m	-	-	-
Beam Intensity	4225 cd	-	4225 cd	-	-	-
Impact Resistance	1 m / 3.28 ft					
Water Resistance	IPX4					
Battery	1 x 16340 rechargeable battery (included) or 1 x CR123A					
Dimensions	76mm x 33 mm x 45 mm / 2.99 x 1.30 x 1.77 in					
Weight	108 g / 3.80 oz (without battery)					



Ambidextrous Rocker Switch & Buttons



Quick Install Rail

FEATURES

- * Produces a high-intensity 650 lumen white light
- * Patented ambidextrous rocker switch for momentary or constant on illumination
- * Patent-pending mounting system allows quick, one-handed attachment to Picatinny or Glock rails
- * Powered by 1 x 16340 rechargeable battery (included) or 1 x CR123A battery

Modes	650 lm / momentary on
Runtime	1 h 30 min / -
Beam Distance	130 m / 130 m
Beam Intensity	4225 cd
Impact Resistance	1 m / 3.28 ft
Water Resistance	IPX7 (1 m)
Battery	1 x 16340 (included) / 1 x CR123A battery
Dimensions	76 mm x 33 mm x 33 mm / 2.99 x 1.30 x 1.30 in
Weight	76 g / 2.68 oz (without battery)



Ambidextrous Rocker Switch



Quick Install Rail

WL22R/G

650 Lumen Rechargeable Compact Weapon Light / Laser Combo



650 LUMENS

FEATURES

- * Provides 650 lumen high-intensity white light and a 5 mW red or green laser (separate models)
- * Patented mounting system quickly attaches to Picatinny and Glock rails without the use of tools
- * Powered by a built-in 250 mAh rechargeable lithium-ion battery with a USB-C port
- * Separate switches for selective white light and laser activation
- * Compact, lightweight design is ideal for concealed carry
- * Windage and elevation adjustments allow precise laser alignment

Model	WL22R			WL22G		
Light Source	White Light	Red Laser	White Light + Red Laser	White Light	Green Laser	White Light + Green Laser
Modes	650 lm	< 5 mW	650 lm	650 lm	< 5 mW	650 lm
Runtime	1 h	6 h 30 min	-	1 h	4 h 15 min	-
Beam Distance	102 m	-	-	102 m	-	-
Beam Intensity	2601 cd	-	-	2601 cd	-	-
Impact Resistance	1 m / 3.28 ft					
Waterproof	IPX4					
Battery	Built-in 250mAh rechargeable battery					
Dimensions	55 mm x 30 mm x 36 mm / 2.17 x 1.18 x 1.42 in					
Weight	74 g / 2.61 oz					



Built-in Rechargeable Li-ion Battery



Ambidextrous Buttons

WL14

500 Lumen Rechargeable Compact Weapon Light



500 LUMENS

FEATURES

- * Ultra-lightweight 48 g (1.69 oz) design is ideal for compact concealed carry handguns
- * Provides 500 lumen high-intensity white light or 52 lm low-intensity illumination
- * Patented mounting system quickly attaches to Picatinny and Glock rails
- * Powered by a built-in 250 mAh rechargeable lithium-ion battery with a USB-C port
- * Battery indicator lights show charge level
- * Twin side switches with memory mode function

	High	Low
Light Output	500 lm	52 lm
Runtime	1 h 15 min	2 h 30 min
Beam Distance	115 m	35 m
Beam Intensity	3306 cd	306 cd
Impact Resistance	1 m	
Water Resistant	IPX7 (1 m)	
Battery	Built-in 250mAh rechargeable battery	
Dimensions	62 mm x 30 mm x 36 mm / 2.19 x 1.18 x 1.42 in	
Weight	48 g / 1.69 oz (with battery)	



Quickly Attaches to Picatinny and Glock Rails



USB-C Rechargeable



HUNTING LIGHTS



760 LUMENS

T53 SET

3-in-1 Multi-light Hunting Flashlight



ACCESSORIES INCLUDED

- RM85S Scope Mount
- TS41-L Remote Switch
- UC4 USB Charging Cable
- 1 x 2600 mAh 18650 Li-ion Battery



Rotating the Side Dial switches Light Sources



USB Direct Charging System



FEATURES

- * 360° dial rotates to switch light sources
- * Patented multifunction DUO Switch, single switch for momentary on, constant on and mode switching
- * USB direct charge port
- * Fits with a scope mount and has a quick-insert remote control switch for convenience

	White	Green	Red
Light Source	CREE® XP LED	CREE® XP GREEN LED	CREE® XP RED LED
Modes	760 lm / 45 lm / Strobe / S.O.S. / Momentary On	129 lm / 30 lm / Strobe / S.O.S. / Momentary On	109 lm / 23 lm / Strobe / S.O.S. / Momentary On
Runtime	4 h 30 min / 31 h / - / - / -	7 h / 34 h / - / - / -	4 h 45 min / 25 h / - / - / -
Beam Distance	220 m	160 m	122 m
Beam Intensity	12100 cd	6400 cd	3721 cd
Waterproof		IPX7 (1 m)	
Impact Resistance		1 m / 3.28 ft	
Battery		1 x 18650 / 2 x CR123A	
Dimensions		147 mm x 25.4 mm x 37 mm / 5.79 x 1 x 1.46 in	
Weight		155 g / 5.46 oz (without battery)	



T7 MAX SET

1,200 Lumen Long Range Rechargeable Hunting Flashlight Set

INCLUDED ACCESSORIES

RM85S Scope Mount
 TS41-L Remote Switch
 1 x 21700 Rechargeable Battery
 UC4 USB Charging Cable

1200
LUMENS



- FEATURES**
- * High Optical Density (HOD) LED creates a maximum 1200 lumen output for a beam distance of 1100 meters
 - * Ideal for long range use
 - * Provides four brightness levels, a strobe, and an S.O.S. function
 - * Multifunction DUO Switch allows easy activation
 - * Powered by 1 x 18650 rechargeable battery (included) or 2 x CR123A batteries
 - * USB direct charging port
 - * Includes remote switch and scope mount

Modes	1200 lm / 621 lm / 150 lm / 21 lm / Momentary On / Strobe / S.O.S.
Runtime	3 h / 4 h 30 min / 14 h / 80 h / - / - / -
Beam Distance	1100 m / 755 m / 350 m / 142 m / - / - / -
Beam Intensity	302500 cd / 142506 cd / 30625 cd / 5041 cd / - / - / -
Waterproof	IPX8 (2m)
Impact Resistance	1 m / 3.28 ft
Battery	1 x 21700 (4800 mAh) Lithium battery
Dimensions	172.4 mm x 27.5 mm x 60.8 mm / 6.79 x 1.08 x 2.39 in
Weight	225 g / 7.94 oz (without battery)

T7 SET v2.0

1,300 Lumen 420 Meter Long Range Hunting Flashlight Set

INCLUDED ACCESSORIES

RM85S Scope Mount
 TS41-L Remote Switch
 1 x 18650 Rechargeable Battery
 UC4 USB Charging Cable

1300
LUMENS



- FEATURES**
- * High performance LED produces a maximum 1300 lumen output for a beam distance of 420 meters
 - * Offers long-range illumination capability in a compact, easily carried size
 - * Provides four brightness levels, a strobe, and an S.O.S. function
 - * Patented multifunction DUO Switch allows easy activation and mode selection
 - * Powered by 1 x 18650 rechargeable battery (included) or 2 x CR123A batteries
 - * Includes remote switch and scope mount for attachment to a long gun
 - * The USB port allows direct charging and attachment of the remote switch

Modes	1300 lm / 520 lm / 140 lm / 40 lm / momentary on / strobe / S.O.S.
Runtime	2 h 30 min / 3 h 45 min / 10 h / 27 h / - / - / -
Beam Distance	420 m / 260 m / 135 m / 70 m / - / - / -
Beam Intensity	44100 cd / 6900 cd / 4556 cd / 1225 cd / - / - / -
Waterproof	IPX8 (2 m)
Impact Resistance	1 m / 3.28 ft
Battery	1 x 18650 rechargeable battery (included) or 2 x CR123A
Dimensions	154 mm x 43.8 mm x 25.4 mm / 6.06 x 1.72 x 1.00 in
Weight	142 g / 5 oz (without battery)



T5G SET V2.0

1,200 Lumen Rechargeable Dual Light Hunting Flashlight Set

INCLUDED ACCESSORIES

RM85S Scope Mount
TS41-L Remote Switch
1 × 18650 Rechargeable Battery
UC4 USB Charging Cable

* T5G is not compatible with the RM87 universal mount due to the magnet effect on the switch

- FEATURES**
- * Dual white and green LED light sources produce maximum 1200 lumen and 170 lumen outputs
 - * Patented dual-light design switches from white to green light by rotating the head
 - * Both LED colors provide two brightness levels, a strobe, and an S.O.S. function
 - * Multifunction DUO Switch allows easy activation and mode selection
 - * Powered by 1 × 18650 rechargeable battery (included) or 2 × CR123A
 - * Includes remote switch and scope mount for attachment to a long gun
 - * The USB port allows direct charging and attachment of the remote switch



Charging Port/Remote Switch Attachment



Rotate Head to Change Light Color

Light Source	LED	Green LED
Modes	1200 lm / 35 lm / momentary on / strobe / S.O.S.	170 lm / 27 lm / momentary on / strobe / S.O.S. (80 lm)
Runtime	3 h 15 min / 35 h / - / - / -	5 h 30 min / 37 h / - / - / -
Beam Distance	265 m / 46 m / - / - / -	230 m / 63 m / - / - / -
Beam Intensity	17556 cd / 529 cd / - / - / -	13225 cd / 992 cd / - / - / -
Waterproof	IPX7 (1 m)	
Impact Resistance	1 m / 3.28 ft	
Battery	1 × 18650 rechargeable battery (included) or 2 × CR123A	
Dimensions	145 mm × 40 mm × 25.4 mm / 5.71 × 1.57 × 1.00 in	
Weight	165 g / 5.82 oz (without battery)	

T5 SET

760 Lumen 400 Meter Long Range Hunting Flashlight Set

INCLUDED ACCESSORIES

RM85S Scope Mount
TS31-L Remote Switch
2 × CR123A Batteries

- FEATURES**
- * High performance LED produces a maximum 760 lumen output for a beam distance of 400 meters
 - * Offers long range illumination capability in a compact, easily carried size
 - * Provides three brightness levels, a strobe, and an S.O.S. function
 - * Patented multifunction DUO Switch allows easy activation and mode selection
 - * Powered by 2 × CR123A batteries (included) or 1 × 18650 rechargeable battery
 - * Includes remote switch and scope mount for attachment to a long gun



Modes	760 lm / 220 lm / 45 lm / Momentary On / Strobe / S.O.S.
Runtime	3 h / 6 h / 27 h / - / - / -
Beam Distance	400 m / 205 m / 95 m / - / - / -
Beam Intensity	40000 cd / 10506 cd / 2256 cd / - / - / -
Waterproof	IPX8 (2m)
Impact Resistance	2 m / 6.56 ft
Battery	2 × CR123A (included) or 1 × 18650 rechargeable battery
Dimensions	143 mm × 34 mm × 25.4 mm / 5.63 × 1.34 × 1.00 in
Weight	119 g / 4.2 oz (without battery)

TA41 SET

2,600 Lumen Ultra High Output Tactical Flashlight Set

INCLUDED ACCESSORIES

RM85S Scope Mount
TS41-L Remote Switch
1 × 21700 Rechargeable Battery
UC4 USB Charging Cable

- FEATURES**
- * High performance LED produces a maximum 2600 lumen output
 - * Offers ultra bright, long range illumination capability in a compact, easily carried size
 - * Provides four brightness levels, a strobe, and an S.O.S. function
 - * Patented multifunction tail cap switch allows easy activation and mode selection
 - * Stainless steel bezel face includes nano-ceramic glass breakers
 - * Powered by 1 × 21700 rechargeable battery (included)
 - * Includes remote switch and scope mount for attachment to a long gun
 - * The USB port allows direct charging and attachment of the remote switch



Modes	2600 lm / 700 lm / 200 lm / 28 lm / Momentary On / Strobe / S.O.S.
Runtime	2 h 30 min / 3 h 45 min / 12 h / 71 h / - / - / -
Beam Distance	272 m / 140 m / 75 m / 29 m / - / - / -
Beam Intensity	18496 cd / 4900 cd / 1406 cd / 210 cd / - / - / -
Waterproof	IPX8 (2m)
Impact Resistance	2 m / 6.56 ft
Battery	1 × 21700 rechargeable battery (included)
Dimensions	148 mm × 38 mm × 27 mm / 5.83 × 1.50 × 1.06 in
Weight	143 g / 5.04 oz (without battery)

HELMET LIGHTS & HEADLAMPS

NEXTORCH headlamps provide the ultimate in hands-free lighting versatility. Lightweight, comfortable, and capable of producing the perfect level of illumination for the job at hand, they are trusted by professionals, tradesmen, and adventurers worldwide.





oStar

500 LUMENS

High Performance Modular
Helmet Light



- FEATURES**
- * Modular design works as a helmet light or headlamp
 - * Compatible with multiple helmet styles
 - * Switchable to four modes: Three brightness levels and S.O.S.
 - * High performance LED produces a maximum 500 lumen output for a 131 meter beam distance
 - * Powered by 1 x 18650 rechargeable battery (included)



Mounted on a Helmet with NVG Mount Mounted on a PASGT Helmet Mounted on a Hard Hat Worn as a Head Lamp

Modes	500 lm / 185 lm / 25 lm / S.O.S.
Runtime	6 h 30 min / 14 h / 60 h / -
Beam Distance	131m / 75m / 27m
Beam Intensity	4290 cd / 1406 cd / 182 cd / -
Water Resistance	IPX4
Impact Resistance	2 m / 6.56 ft
Battery	1 x 18650 rechargeable battery (included)
Dimensions	78 mm x 65 mm x 46 mm / 3.07 x 2.56 x 1.81 in
Weight	87 g / 3.06 oz (without battery)

rStar

Multi-light Source Tactical Helmet Light

80 LUMENS

- FEATURES**
- * 4-Color main light source, white / red / green + IR light.
 - * IFF beacon available, Identification Friend or Foe.
 - * The three switches are designed independently, with clear logic and easy operation.
 - * Flexible universal rod lighting
 - * Lightweight design



White / Red / Green / IR / IFF



Equipped with Various Accessories, Can be Mounted on Different Tactical Helmets and Vests

Universal Rod Lighting

Light Source	White		Red	Green	IR	IFF Beacon IR Light
	High	Low				
Modes	80 lm	8 lm	1 lm	3 lm	940 nm	-
Runtime	1 h 30 min	33 h	38 h	38 h	38 h	38 h
Beam Distance	12 m	4 m	-	-	-	-
Beam Intensity	40 cd	4 cd	-	-	-	-
Water Resistance	IPX4					
Impact Resistance	2m / 6.56 ft					
Battery	One AA Alkaline Battery or AA 1.5V Li-ion Battery					
Dimensions	133 mm x 30 mm x 41 mm / 5.24 x 1.18 x 1.61 in					
Weight	50 g / 1.76 oz (Without Battery)					

iStar

450 LUMENS

Rechargeable Multifunction
Smart Headlamp



- FEATURES**
- * High performance white and red LEDs produce a maximum output of 450 lm
 - * Innovative flip-up design powers the light on and provides stepless dimming from 20-450 lm
 - * Switchable to five modes: Spotlight, high and low floodlight, red beacon, and red flashing
 - * Built-in 1100 mAh rechargeable battery with USB-C direct charging port



Flip-up Head Activates and Dims Light Compact, Lightweight Design Uniform and Flood-lit Reading Light, no Blue Light Hazard

Modes	Spotlight		Floodlight		Red Light	
	Stepless Dimming	High	Low	High	Flash	Flash
Light Output	20 lm - 450 lm	105 lm	14 lm	14 lm	14 lm	14 lm
Runtime	21 h - 2 h 30 min	2 h 45 min	15 h	15 h	15 h	25 h
Beam Distance	16 m - 80 m	13 m	4 m	-	-	-
Beam Intensity	64 cd - 1600 cd	40 cd	5 cd	-	-	-
Water Resistance	IPX4					
Impact Resistance	1 m / 3.28 ft					
Battery	Built-in 1100 mAh rechargeable battery					
Dimensions	67 mm x 39 mm x 32 mm / 2.64 x 1.54 x 1.26 in					
Weight	70 g / 2.47 oz (without battery)					



maxStar

Rechargeable High Output Magnetic Switch Headlamp

1200
LUMENS

FEATURES

- * High performance LED produces a maximum output of 1200 lumens for a 200 meter beam distance
- * Switchable to three brightness levels
- * Rotating magnetic dial switch on lamp head allows easy one-handed mode selection
- * Powered by a built-in 18650 rechargeable battery with USB-C direct charging port



Modes	1200 lm / 160 lm / 20 lm
Runtime	4 h 30 min / 8 h / 40 h
Beam Distance	200 m / 72 m / 25 m
Beam Intensity	10000 cd / 1296 cd / 156 cd
Water Resistance	IPX4
Impact Resistance	1 m / 3.28 ft
Battery	Built-in 18650 rechargeable battery
Dimensions	73 mm x 33 mm x 60 mm / 2.87 x 1.30 x 2.36 in
Weight	147 g / 5.19 oz (with battery)



Rotating Magnetic Dial Mode Switch



Pivoting Design Adjusts through 180° Range



USB-C Direct Charging

myStar R/myStar R AA

360° Focus Adjustable Dual Battery Headlamp

760 LUMENS 600 LUMENS

FEATURES

- * NEXTORCH Patented Fresnel Lens Focusing Technology allows progressive one-handed adjustment from flood light to long range beam
- * Versatile focus adjustable design is adaptable to many lighting applications
- * Switchable to four modes: Three brightness levels and S.O.S.
- * Head tilts 60 degrees vertically for accurate light placement
- * Powered by either a rechargeable lithium-polymer battery pack (myStar R) or a 3 x AA battery pack (myStar RAA)
- * Y-shaped headband harness ensures comfort

Compatible with Two Batteries



760 lm
myStar R's 3,000 mAh Li-ion rechargeable battery



600 lm
myStar R AA's 3 x AA Batteries



Focus Adjustable Beam



Detachable Battery Pack



Comfortable Y-Shaped Harness

Model	myStar R	myStar RAA
Battery	3000 mAh rechargeable battery	3 x AA battery pack
Modes	760 lm / 245 lm / 28 lm / S.O.S.	600 lm / 240 lm / 35 lm / S.O.S.
Runtime	4 h 45 min / 8 h 15 min / 81 h / -	4 h 30 min / 7 h / 55 h / -
Beam Distance	220 m / 124 m / 42 m / -	180 m / 118 m / 45 m / -
Beam Intensity	12100 cd / 3844 cd / 441 cd / -	8100 cd / 3481 cd / 506 cd / -
Water Resistance	IPX4	
Impact Resistance	1 m / 3.28 ft	
Dimensions	Light Body: 74 mm x 40 mm x 44 mm / 2.91 x 1.57 x 1.73 in	Battery Pack: 76 mm x 28.5 mm x 82 mm / 2.99 x 1.12 x 3.23 in
Weight	120 g / 4.23 oz (without battery)	



trekStar

Ultra Bright Multifunction Headlamp

220 LUMENS



Red LED Preserves Night Vision



Detachable Lamp

- FEATURES**
- * Lightweight headlamp provides both white light and red light illumination to preserve your night vision
 - * Switchable to five modes: Three white light brightness levels, red light, and S.O.S.
 - * Head tilts 100 degrees vertically for accurate light placement
 - * Powered by 3 x AAA batteries (included)
 - * Light module can be detached and used separately



Light Source	1 x White LED and 2 x Red LEDs
Modes	220 lm / 125 lm / 9 lm / Red (2 lm) / S.O.S.
Runtime	2 h 30 min / 9 h / 98 h / 92 h / -
Beam Distance	73 m
Beam Intensity	1332 cd
Water Resistance	IPX4
Impact Resistance	1 m / 3.28 ft
Battery	3 x AAA batteries (included)
Dimensions	55 mm x 38 mm x 32 mm / 2.17 x 1.50 x 1.26 in
Weight	83 g / 2.92 oz (with batteries)

myStar V2.0

360° Focus Adjustable Rechargeable Headlamp

760 LUMENS



Focus Adjustable Beam Flashing Red Safety Light Comfortable Y-Shaped Harness



reddot award winner



Modes	760 lm / 245 lm / 28 lm / S.O.S.
Runtime	4 h 45 min / 8 h 15 min / 81 h / -
Beam Distance	220 m / 124 m / 42 m / -
Beam Intensity	12100 cd / 3844 cd / 441 cd / -
Water Resistance	IPX4
Impact Resistance	1 m / 3.28 ft
Battery	Built-in 3000 mAh rechargeable battery with Micro USB direct charging port
Dimensions	Light Body: 74 mm x 40 mm x 44 mm / 2.91 x 1.57 x 1.73 in Battery Pack: 76 mm x 28.5 mm x 82 mm / 2.99 x 1.12 x 3.23 in
Weight	175 g / 6.17 oz (with battery pack)

- FEATURES**
- * NEXTORCH Patented Fresnel Lens Focusing Technology allows progressive one-handed adjustment from flood light to long range beam
 - * Versatile focus adjustable design is adaptable to many lighting applications
 - * Switchable to four modes: Three brightness levels and S.O.S.
 - * Powered by a built-in rechargeable lithium-polymer battery pack with a Micro USB charging port
 - * Y-shaped headband harness ensures comfort
 - * Flashing red safety light on battery pack provides enhanced visibility

ecoStar

Lightweight Headlamp and Clip Light

48 LUMENS



Detachable Lamp for Easy Transport Includes Clip-Style Mount

- FEATURES**
- * Lightweight headlamp provides both white light and red light illumination to preserve your night vision
 - * Switchable to four modes: Two white light brightness levels, red light, and S.O.S.
 - * Head tilts 180 degrees vertically for accurate light placement
 - * Includes multifunction clip mount for attachment to caps, pockets, backpacks, and MOLLE webbing
 - * Powered by 2 x AAA batteries (included)



Light Source	2 x White LEDs and 1 x Red LED
Modes	48 lm / 6 lm / Red (5 lm) / S.O.S.
Runtime	8 h / 49 h / 111 h / -
Beam Distance	16 m
Beam Intensity	64 cd
Water Resistance	IPX4
Impact Resistance	1 m / 3.28 ft
Battery	2 x AAA batteries (included)
Dimensions	54 mm x 42 mm x 21 mm / 2.13 x 1.65 x 0.83 in
Weight	71 g / 2.50 oz (with batteries)

SPECIALIZED LIGHTS



ND30

ND30 Tactical Distraction Device

8000 LUMENS



FEATURES

- * Hand thrown 8000 lumen visual strobe and 100 dB auditory distraction device for use by tactical teams
- * Cylindrical LED array ensures omnidirectional light projection
- * Selectable delay: 0.5, 1, 1.5 and 3 seconds
- * Selectable durations: 1, 2, 9 and 12 seconds
- * Powered by a built-in rechargeable battery with a USB-C direct charging port

Light Output	8000 lm
Sound Pressure Level	130 dB (about 100 dB at 1 m)
Battery Life	1000 times in 1 sec duration / 300 times in 2 sec duration / 70 times in 9 sec duration / 30 times in 12 sec duration
Waterproof	IPX7 (1 m)
Impact Resistance	3 m
Battery	1 x 18650 (built-in)
Dimensions	128 mm x 42 mm / 5.04 x 1.65 in
Weight	223 g (with battery)

P20

4,000 Lumen Focussable Shield Light

4000 LUMENS



FEATURES

- * High-intensity light for direct mounting on ballistic shields
- * Four light heads with individually focusable beams
- * Remote switch with One-Step-Strobe function
- * Multiple mounting options
- * Powered by 2 x 21700 rechargeable batteries with USB-C direct charging ports
- * LED power indicator



Individually Focusable Beams



Universal Mounting

Modes	4000 lm / Strobe
Runtime	2 h 45 min / 3 h 45 min
Beam Distance	550 m / -
Beam Intensity	76800 cd / -
Waterproof	IPX4
Impact Resistance	1 m / 3.28 ft
Battery	2 x 21700
Dimensions	185 mm x 85 mm x 55.6 mm / 7.28 x 3.34 x 2.19 in
Weight	433 g (without battery)

MULTIFUNCTION & SIGNAL LIGHTS

The most effective way to get a job done in low-light conditions is to use both hands. NEXTORCH's innovative multifunctional lights offer a broad range of hands-free lighting tools that are ideally suited for law enforcement, security, first responders, and civilian applications.



Products



Accessories



Multi-mount Clip



Headlamp Strip



Helmet Mount



Bicycle Mount

Combination Examples



Shoulder Light / Clip Light



Headlamp



Helmet Light



Bicycle Light



UT51



UT41

20 LUMENS



UT31

220 LUMENS



UT30

320 LUMENS



UT22

11 LUMENS



UT21

11 LUMENS



UT11C

170 LUMENS



UT10C

170 LUMENS



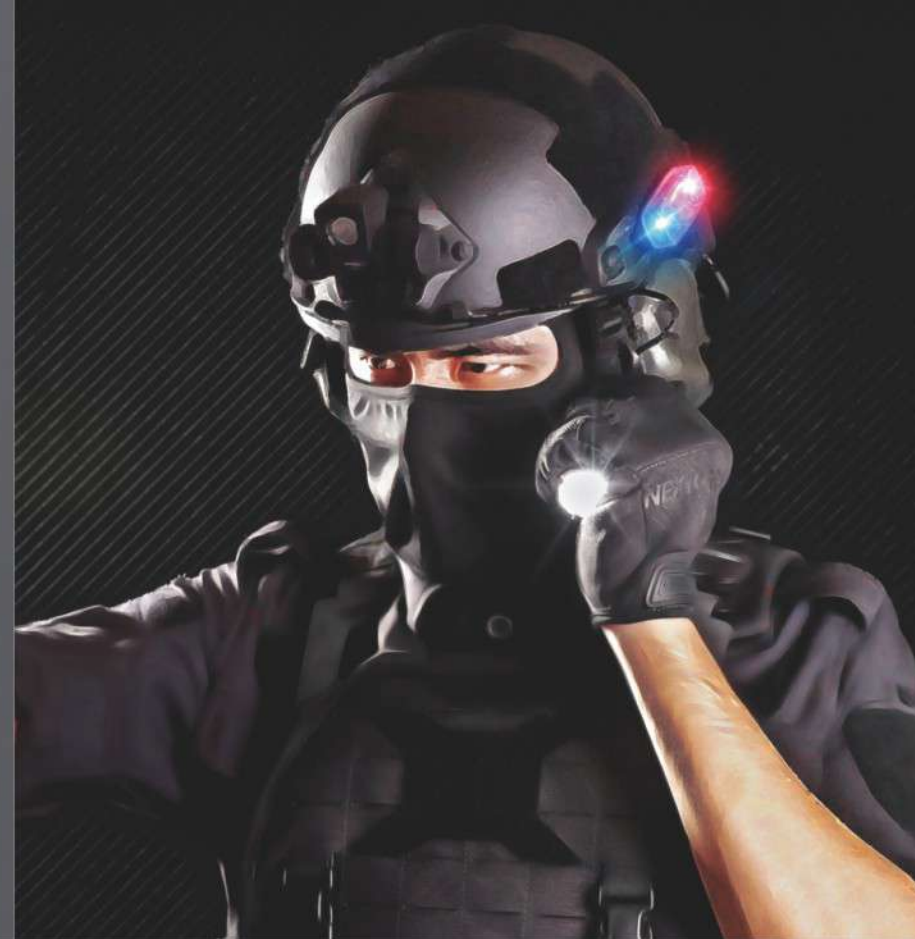
UL12

17 LUMENS



UL10

70 LUMENS



UT51

Red & Blue Flashing Warning Bracelet



360 Degree Visibility



Slap Bracelet Design



USB-C Direct Charge



Compact and Lightweight

	Runtime	
	Constant On	Flash
Red & Blue Flash	—	12 h
Red Light	6 h	12 h
Blue Light	2 h 30 min	5 h
Impact Resistance	2 m	
Battery	Built-in 150 mAh Li-ion battery	
Dimensions	348 mm x 36 mm x 10 mm / 13.70 x 1.42 x 0.39 in	
Weight	38 g / 1.34 oz (with battery)	

FEATURES

- * Hands-free slap bracelet design, slaps and curls up on any cylindrical object
- * 5 lighting modes: red flashing, blue flashing, red & blue flashing, red light, blue light
- * Compact and lightweight, only 38g
- * USB-C direct charge port
- * LED battery indicator

UT41

Multifunction Rechargeable Safety Light



20 LUMENS



Helmet Mount



MOLLE Mount



6 Light Sources 13 Modes



USB-C Direct Charge

Light Source	White / Red / Blue LEDs
Modes	Red & Blue Flash / Red 3 lm / Blue 2 lm / Yellow 9 lm / Green 12 lm / White 20 lm / IR 850 nm
Runtime	56 h / 18 h / 16 h / 20 h / 18 h / 12 h / 13 h
Water Resistance	IPX8 (2 m)
Impact Resistance	2 m / 6.56 ft
Battery	500 mAh Li-ion battery
Dimensions	62.5 mm x 27 mm x 25 mm / 2.46 x 1.06 x 0.98 in
Weight	29 g / 1.05 oz (with battery)

FEATURES

- * High-visibility multifunctional safety light provides excellent visibility
- * Includes six LED light sources: Green, yellow, blue, red, white, and infrared (IR)
- * Features 13 beacon and flashing operational modes
- * USB-C direct charging port
- * LED battery level indicator
- * Includes hardware to mount on helmets, MOLLE webbing, and other surfaces

UT31

Rechargeable Clip Light / Safety Light

220 LUMENS



FEATURES

- * Combination hands free white light illumination and high-visibility colored safety light
- * Three LED light sources: white, red, and blue
- * Colored light modes include constant on red, flashing red, and flashing red & blue
- * Hands-free gesture sensor control
- * USB-C direct charging port
- * Multi purpose clip mount attaches to caps, pockets, backpacks, and MOLLE webbing
- * Also compatible with optional mounting platforms for use as a headlamp, bike light, or helmet light

Modes	High (White)	Low (White)	Red	Red Flash	Red-Blue Flash
Runtime	6 h	16 h	21 h	42 h	80 h
Beam Distance	53 m	19 m	-	-	-
Beam Intensity	702 cd	90 cd	-	-	-
Water Resistance	IPX4				
Impact Resistance	1 m / 3.28 ft				
Battery	Built-in 640 mAh rechargeable battery with USB-C direct charging port				
Dimensions	61 mm x 53 mm x 30 mm / 2.40 x 2.09 x 1.18 in				
Weight	50 g / 1.76 oz (with battery)				



LED Infrared Induction



USB-C Rechargeable

UT30

Smart-Sensing Multifunction Light

320 LUMENS



FEATURES

- * Dual white and red LED light sources
- * Provides four white light brightness levels and three beam patterns
- * Red light modes include constant on and flashing safety mode
- * Hands-free gesture sensor control
- * USB-C direct charging port
- * Compatible with multiple mounting platforms for use as a headlamp, bike light, or helmet light

Light Source	Dual White and Red LEDs
Modes	320 lm / 220 lm / 140 lm / 4 lm
Runtime	3 h 45 min / 7 h / 7 h 30 min / 21 h / -
Beam Distance	55 m / 53 m / 15 m / -
Beam Intensity	756 m / 702 cd / 56 cd / -
Water Resistance	IPX4
Impact Resistance	1 m / 3.28 ft
Battery	Built-in 640 mAh rechargeable battery
Dimensions	61 mm x 47 mm x 19 mm / 2.40 x 1.85 x 0.75 in
Weight	41 g / 1.44 oz (with battery)



Multi-Mount Clip

Headlamp Strap

Bike Mount

Helmet Mount



Hands-Free Gesture Control



Dual White and Red LED Light Sources

UT22

Multifunction Rechargeable Safety Light

11 LUMENS



4 Accessories



360° Rotatable Base



Security Warning Light

FEATURES

- * High-visibility colored safety light provides 360° visibility from a distance of 1,000 meters and white light illumination
- * Features 22 blue-red LEDs and a white illumination LED
- * Orientation sensor automatically switches between horizontal and vertical LED arrays for maximum visibility
- * Hands-free gesture sensor control
- * USB-C direct charging port
- * Two built-in high strength magnets allow easy attachment to steel surfaces
- * Includes platforms to mount on helmets, MOLLE webbing, and other surfaces

Light Source	White LED and 22 blue-red LEDs			
Modes	Red-blue Flash (horizontal)	Red-blue Flash (vertical)	Red-blue Flash (all directions)	White Light
Runtime	20 h	22 h	10 h	25 h
Water Resistance	IPX4			
Impact Resistance	2 m / 6.56 ft			
Battery	Built-in 640 mAh rechargeable battery with USB-C direct charging port			
Dimensions	72.3 mm x 50 mm x 40 mm / 2.85 x 1.97 x 1.57 in			
Weight	92.3 g / 3.25 oz (with battery)			

UT21

USB-C Rechargeable Warning Light

11 LUMENS



Clip



Detachable Clip



Strong Magnetic Adsorption

FEATURES

- * Standard shoulder clip with 360° rotation
- * 2 meter impact resistant, IPX4 water resistant
- * Long-lasting 640 mAh built-in Li-ion battery with USB-C charging port
- * Double tap to turn ON/OFF the light temporarily
- * 22 blue-red LEDs for all around lighting; white light illumination with over 1,000 meter beam distance

Light Source	White / Red / Blue LEDs			
Modes	Red-blue Flash (horizontal)	Red-blue Flash (vertical)	Red-blue Flash (all directions)	White Light
Runtime	20 h	22 h	10 h	25 h
Water Resistant	IPX4			
Impact resistance	2 m / 6.56 ft			
Battery	Built-in 640 mAh li-ion battery			
Dimensions	72.4 mm x 50 mm x 38.4 mm / 2.85 x 1.97 x 1.51 in			
Weight	85 g/3 oz (with battery)			

UT11C

Dual Function Rechargeable Safety Light

170
LUMENS



Cap Clip

- FEATURES**
- * Combination white light illumination and red & blue flashing signal light
 - * COB (Chip-on-Board) light source provides soft flood lighting
 - * Head tilts 180 degrees vertically for accurate light placement
 - * USB-C direct charging port
 - * LED battery level indicator

Modes	Red-Blue Flash: -	High (White): 170 lm	Low (White): 20 lm
Runtime	81 h	2 h	11 h
Beam Distance	-	19 m	7 m
Beam Intensity	-	90 cd	12 cd
Water Resistance	IPX4		
Impact Resistance	1 m		
Battery	Built-in rechargeable battery with USB-C direct charging port		
Dimensions	60 mm x 46 mm x 18 mm / 2.36 x 1.81 x 0.71 in		
Weight	48 g / 1.69 oz (with battery)		



Red and Blue Flashing Signal



Hat Light

UT10C

Multifunction Rechargeable Light

170
LUMENS



Cap Clip Headlamp Strap Bike Mount Helmet Mount

- FEATURES**
- * Compact, lightweight design
 - * Dual white and red LED light sources
 - * Provides two white light brightness levels
 - * Red light modes include constant on and flashing safety mode
 - * USB-C direct charging port
 - * Compatible with multiple mounting platforms for use as a clip-on light, headlamp, bike light, or helmet light

Modes	White: 170 lm / 20 lm	Red: 5 lm / flash
Runtime	2 h / 11 h	18 h / -
Beam Distance	19 m / 7 m	- / -
Beam Intensity	90 cd / 12 cd	- / -
Impact Resistance	1 m / 3.28 ft	
Battery	Built-in 640 mAh rechargeable battery	
Dimensions	60 mm x 46 mm x 18 mm / 2.36 x 1.81 x 0.71 in	
Weight	39 g / 1.37 oz (with battery)	



USB-C Rechargeable Design



Hat Light

UL12

Multifunction Clip Light / Safety Light

17
LUMENS



- FEATURES**
- * High-visibility colored safety light and white light illumination
 - * Clip-on design allows easy attachment to caps, pockets, backpacks, and MOLLE webbing
 - * Pivoting design adjusts through 180° range
 - * Powered by 2 x AAA batteries (included)

Light Source	White, Red, and Blue LEDs
Modes	17 lm (white) / 3 lm (red) / red-blue flash
Runtime	7 h 30 min / 18 h / 62 h
Beam Distance	13 m / 6 m / -
Beam Intensity	42 cd / 9 cd / -
Water Resistance	IPX4
Impact Resistance	1 m / 3.28 ft
Battery	2 x AAA batteries (included)
Dimensions	32 mm x 48 mm x 54 mm / 1.26 x 1.89 x 2.13 in
Weight	49 g / 1.73 oz (with batteries)



Compact and Portable



Hat Light

UL10

Multipurpose Clip Light

70
LUMENS



- FEATURES**
- * 3 high performance LEDs, max output 70 lumens
 - * Multipurpose clip mount, mounts onto caps, pockets, any straps and MOLLE webbing etc.
 - * 180 degree adjustable, easy flip-and-hold lighting
 - * Ultra-lightweight, weighing only 49.5 grams overall (Batteries)
 - * Able to exchange the clip with ECO STAR, TREK STAR, UT10 or other Nextorch clip lights

Modes	70 lm / 7 lm / S.O.S.
Runtime	4 h 30 min / 44 h / -
Beam Distance	18 m
Beam Intensity	81 cd
Water Resistant	IPX4
Impact Resistance	1 m / 3.28 ft
Battery	2 x AAA (included)
Dimensions	32 mm x 48 mm x 54 mm / 1.26 x 1.89 x 2.13 in
Weight	49.5 g / 1.75 oz (with batteries)



Attach to Backpack Strap



On MOLLE Webbing

GLO-TOOB®

The GLO-TOOB is a personal signal light conceived by Dave Kessel and Lewton Levy in 1996 after a night scuba dive in South Africa. Disappointed with the product they were using at the time, which was neither reliable nor environmentally friendly, they decided to design a signal light specifically for the scuba diving market. Kessel approached NEXTORCH with the idea and after several years of intensive research, development and real-world testing, the GLO-TOOB was born and released in 2002. This revolutionary personal signal light was patented and set new standards not only in scuba diving, but also gained a loyal following among military, law enforcement and adventure sports users.

All Rights Reserved
© George Lewbel



GT-AAA Aurora Signal Light

- Features red, green, and blue LED lights
- Seven modes: Three constant-on and four flashing
- Visible from 360°
- IPX8 waterproof
- Designed for use with the GLO-TOOB Tactical Kit (GTK) for mounting to Ops-Core helmets, MOLLE webbing, and other surfaces
- Powered by 1 x AAA battery (included)

Light Source	Red, Green, and Blue LED	
Modes	Constant on	Flashing
	Red / Green / Blue	Red / Green / Blue / Red-Blue
Runtime	14 h / 17 h / 17 h	32 h / 35 h / 35 h / 48 h
Waterproof	IPX8	
Battery	1 x AAA batteries (included)	
Dimensions	77.4 mm x 19 mm / 3.05 x 0.75 in	
Weight	29 g / 1.02 oz (without battery)	



GTK (GLO-TOOB TACTICAL KIT)

- Specifically designed to mount to the ARC rails on Ops-Core helmets
- Base plate allows quick, secure attachment to MOLLE webbing
- Includes velcro mounting option
- Attaches and detaches in seconds



Dimensions	68.4 mm x 50.3 mm x 27.9 mm
Ring Size	18.8 mm – 19.8 mm
Colors	Black / Tan
Weight	27 g / 0.95 oz
Material	PA + GF



GT-AAA

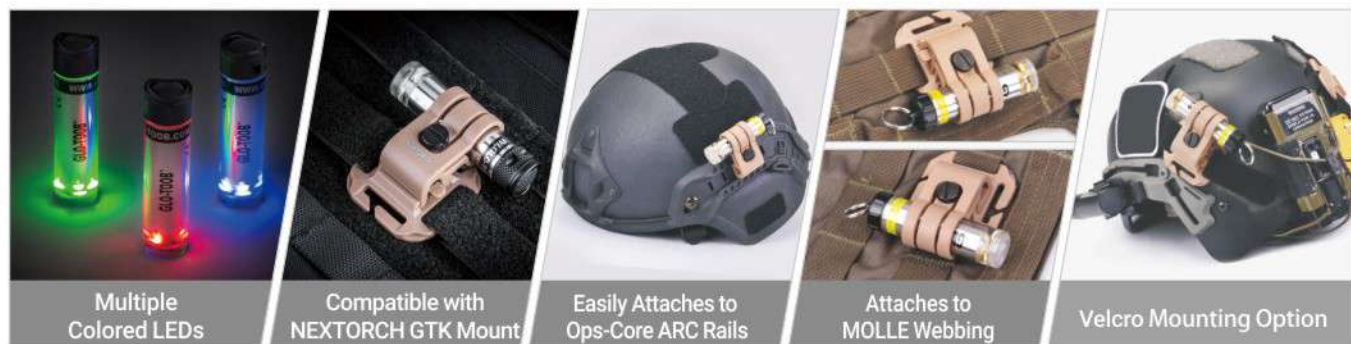


GT-AAA PRO



GT-AAA IR

	GT-AAA	GT-AAA PRO	GT-AAA IR
Number of Modes	3	3	3
Battery	1 x AAA	1 x AAA	1 x AAA
LED Color Choices	Red / Green / Blue	Red / Green / Blue / Yellow	IR
Runtime	4-15 h	5.5 - 27 h	5.5 - 27 h
Depth Rating	60 m / 197 ft	60 m / 197 ft	IPX8
Dimensions	76 mm x 19 mm / 2.99 x 0.75 in	76 mm x 19 mm / 2.99 x 0.75 in	77.4 mm x 19 mm / 3.04 x 0.75 in
Weight	34 g / 1.2 oz (with battery)	26.5 g / 1.04 oz (without battery)	26.5 g / 0.93 oz (without battery)



ACCESSORIES

USB-C Rechargeable Battery

- * USB-C rechargeable for convenient use
- * Features overcharge/discharge protection circuits

- * Charging indicator to monitor charging status
- * Recycle charging, economical and energy efficient



Battery	21700 Li-ion Battery
Capacity	4800 mAh
Voltage	3.6 V
Charge Cycles	500 times
Working Temperature	-20~60 °C
Weight	80 g
Dimensions	Diameter 21.5 mm Height 76.3 mm



Battery	18650 Li-ion Battery
Capacity	3400 mAh
Voltage	3.6 V
Charge Cycles	500 times
Working Temperature	-20~60 °C
Weight	57 g
Dimensions	Diameter 18.8 mm Height 70 mm



Battery	18650 Li-ion Battery
Capacity	2600 mAh
Voltage	3.6 V
Charge Cycles	500 times
Working Temperature	-20~60 °C
Weight	50 g
Dimensions	Diameter 18.8 mm Height 70 mm



Battery	16340 Li-ion Battery
Capacity	800 mAh
Voltage	3.6 V
Charge Cycles	500 times
Working Temperature	-20~60 °C
Weight	18 g
Dimensions	Diameter 16.6 mm Height 35.5 mm



Battery	14500 Li-ion Battery
Capacity	880 mAh
Voltage	3.6 V
Charge Cycles	500 times
Working Temperature	-20~60 °C
Weight	40 g
Dimensions	Diameter 14.5 mm Height 50 mm



Battery	AA Battery
Capacity	2200 mAh
Voltage	1.5 V
Charge Cycles	500 times
Working Temperature	-20~60 °C
Weight	21 g
Dimensions	Diameter 14.3 mm Height 50 mm

Non-direct-charge Rechargeable Battery



Battery	21700 Li-ion Battery
Capacity	4800 mAh
Voltage	3.6 V
Charge Cycles	500 times
Working Temperature	-20~60 °C
Weight	73 g
Dimensions	Diameter 21.5 mm Height 76.3 mm



Battery	18650 Li-ion Battery
Capacity	2600 mAh
Voltage	3.6 V
Charge Cycles	500 times
Working Temperature	-20~60 °C
Weight	52 g
Dimensions	Diameter 18.8 mm Height 70 mm

Disposable Battery



Battery	AA battery
Capacity	2950 mAh
Voltage	1.5 V
Working Temperature	-18~50 °C
Weight	24 g
Dimensions	Diameter 14 mm Height 50 mm



Battery	AAA battery
Capacity	1300 mAh
Voltage	1.5 V
Working Temperature	-18~50 °C
Weight	12 g
Dimensions	Diameter 10 mm Height 44 mm

Chargers



DC20 UNIVERSAL BATTERY CHARGER

* Batteries not included

This universal battery charger has a high-definition LCD display. Its battery compartment extends to accept 21700, 18650, 18350, 17670, 16340, 14500, AAA and AA batteries. It can effectively charge batteries that have been over-discharged or stored for extended periods and includes overcharge protection circuitry.

Flashlight Accessories and Other Items



HM30 Multipurpose Handle

Specially designed for the Saint Torch series, this handle provides a comfortable and convenient grip. It also includes threaded holes for mounting to a tripod or for use as a weapon light.



V15 Tactical Belt Bag

This tactical belt bag is made from durable, water-resistant nylon. Its large interior compartment allows it to be easily configured to organize your gear. It can be used on a belt, tactical vest, or a tactical bag. It has external MOLLE webbing for attaching accessory pouches as well.



TS41-L Tactical Remote Switch

This waterproof pressure switch allows the remote activation of weapon-mounted lights while maintaining your firing grip. It provides both constant-on and momentary activation and is compatible with our T7, T5G, T53, TA4, and TA40 flashlights.



FR-2 Tactical Flashlight Ring

Enhance your capabilities when using your flashlight in tactical or self-defense situations with this innovative flashlight ring. It functions as a deep-pocket carry clip, yet provides a quick draw and improved retention. It also supports many low-light shooting positions and can even be used as a striking tool at close quarters. Available in three colors, it fits flashlights with tail cap switches and body diameters of 25-27 mm (0.98-1.06 in), including the TA30C MAX and TA5.



TRAFFIC WAND

Designed to fit flashlights with head diameters of 33-38 mm (1.30-1.50 in), this accessory transforms a flashlight into an illuminated traffic wand. It fits flashlights including P86, P84, P83, etc.



FT32 Color Filter Kit

Increase the versatility of your flashlight with these high-quality colored filters. This kit includes three colored filter lenses (red, green, and blue) and a slip-on filter mount that is compatible with our TA40, TA3, T6A, T5, PA5, and P60 flashlights.



V65 X-CARRY Quick-Draw Flashlight Holster

This holster is specially designed as an integrated holster. Extremely simple, lightweight design, 360° rotatable, the bottom could be illuminated, and supports 16 angles of portable lighting. Modular quick-cut system, and supports rapid switching between sets of the same series. It has strong compatibility, supports flashlight head/bottom plug-in, and it fits flashlights with barrel head/bottom diameters of 27-30 mm, belts or MOLLE webbing within 50mm.



V55 / V55L X-CARRY Quick-Draw Tactical Flashlight Holster

It features a 360° rotatable translucent design with adjustable illumination angle and a removable back clip for hands-free illumination in the holster. Quick lock/unlock structure to prevent accidental loss. V55 fits flashlights with a head diameter of 21-31 mm and barrel diameter of 19-23 mm, belts or MOLLE webbing within 50 mm. V55L fits flashlights with head diameter of 27-39 mm and barrel diameter of 24-28 mm, belts or MOLLE webbing within 50 mm.

Helmet Flashlight Mount



HM2 Lightweight Multi-Angle Flashlight Mount

This versatile mount can easily be attached to helmets and other surfaces with double-sided 3M adhesive strip. The light holder can rotate 360 degrees and fit lights with body diameters of 22-30 mm (0.87-1.15 in).



HM3 Headlamp Helmet Clip

This injection-molded nylon clip allows NEXTORCH headlamps to be securely mounted on most helmets. The clip attaches to the headlamp strap and then hooks under the edge of the helmet.



RM25S Tactical Picatinny Light Mount

This precision machined mount allows any flashlight with a body diameter of 22-26.5 mm (0.87-1.04 in) to be easily attached to a firearm with any Picatinny rail.



V51 Quick-Draw Flashlight Holster

Carry your flashlight so it's instantly accessible with this quick-draw holster. It features a quick-release locking lever and an open-ended design that allows hands-free lighting with the light in the holster. The holster body rotates 360 degrees and locks in 16 positions, so you can orient the light exactly where you want. It works with flashlights with body diameters from 25-32 mm (1.00-1.25 in), fits belts up to 55 mm (2.17 in) wide, and mounts on MOLLE webbing.



V35 X-CARRY Modular Tactical Quick Draw Holster

This holster was specially designed to fit the models of TA30 V2.0/TA30C/TA20 flashlight with the FR-1 tactical flashlight ring. Extremely simple, lightweight design, 360° rotatable, the bottom could be illuminated, and supports 16 angles of portable lighting. Side-pull locking, stable wearing and effective loss prevention. Modular quick-cut system, supports rapid switching between sets of the same series. It fits belts or MOLLE webbing within 50mm.



V6 Adjustable Tension Holster

The unique design of this holster allows you to adjust the tension of the holster body with rubber O-rings. Its open-bottom construction holds flashlights bezel-up or bezel-down and fits flashlights with diameters from 27-30 mm (1.06-1.18 in). It mounts to MOLLE and belts up to 55mm (2.17 in) wide and its body rotates 360 degrees.



RM85 Quick Attach/Detach Scope Mount

Mount any flashlight with a body diameter of 20-28 mm (0.79-1.10 in) to a firearm scope with this quick-mount clamp. It installs without tools and fits scopes with diameters of 25.6-30 mm (1.00-1.18 in).



RM85S Universal Tactical Mount

Mount any flashlight with a body diameter of 23-28 mm (0.91-1.10 in) to a long-gun barrel with this quick-mount clamp. No tools required and fits firearms with barrel diameters of 25.6-30 mm (1.00-1.18 in).



RM87 Magnetic Universal Mount

Fits flashlight body size:
23 mm-26.5 mm (0.91"-1.04")



V5 Tactical Polymer Holster

This versatile holster features a quick-release locking lever and an open-ended design that allows hands-free lighting with the light in the holster. The holster body rotates 360 degrees and fits flashlights with a body diameter of 25-32 mm (1 - 1.25 in). Designed for carry on belts up to 50 mm (2 in) wide.



V10 Nylon Holster

Constructed with durable 1000D Cordura® nylon, this versatile belt holster fits belts up to 80 mm (3.15 in) wide and is compatible with NEXTORCH models P80, P60, TA5, TA40, and T7.



FR-1 / FR-1 MAX Tactical Flashlight Ring

This innovative accessory enhances your capabilities when using your flashlight in tactical or self-defense situations. It functions as a deep-pocket carry clip, yet provides a quick draw and improved retention. It also works with a variety of low light shooting positions and can even be used as a striking tool at close quarters. Available in three colors, it fits flashlights with tail cap switches and body diameters of 23.2-25.5 mm (0.91-1.00 in), including the TA30C, TA01, and E6.

NEX BATON



TR CERTIFICATE

NEX is a division of NEXTORCH dedicated to designing and manufacturing the world's finest tactical batons. The heart of every NEX baton is our innovative NEX Lock—A precision-machined mechanism that locks the baton's sections rigidly open when the baton is extended yet allows it to be easily closed with the press of a button. Manufactured from the finest materials, NEX batons set a new standard in tactical baton quality and reliability.



Smooth Extension & Retraction



Solid Locking



2 meter Impact Resistance



QUICKER SERIES

Expandable Duty Baton Series

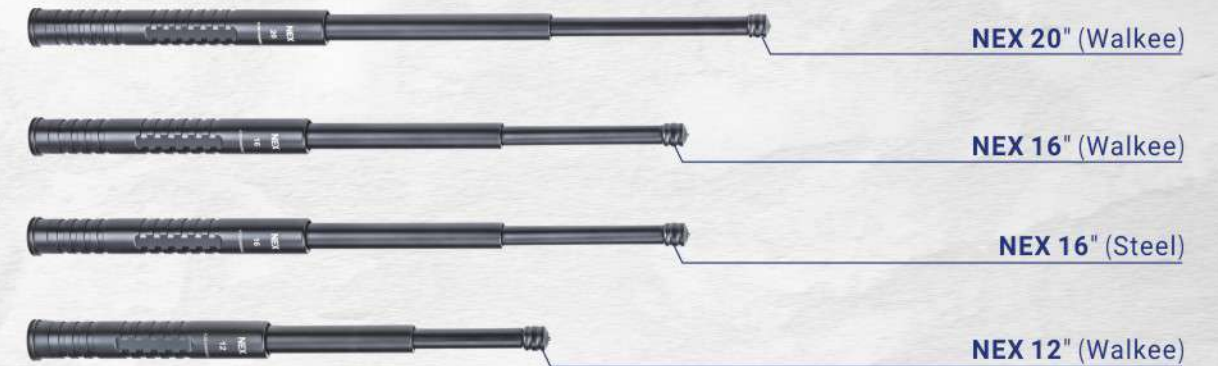


BATON FLASHLIGHT SERIES



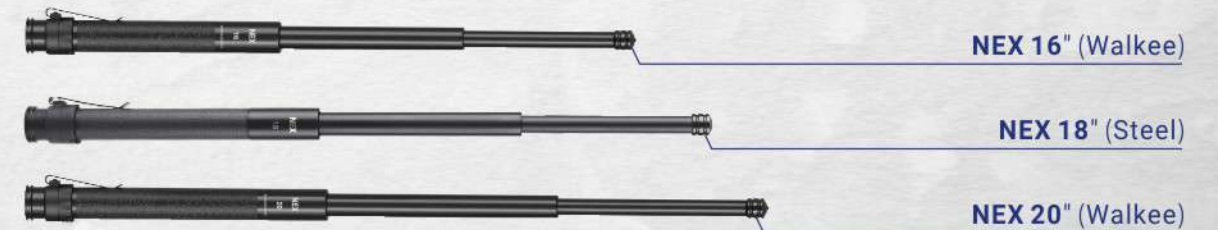
WALKER

Portable Baton Series



WALKER

Leather Handle Portable Baton





Smooth Extension
& Retraction



Solid
Locking



2 meter
Impact Resistance



QUICKER

Expandable Duty Baton Series

FEATURES

- State-of-the-art NEX Lock mechanism locks the baton rigidly open and easily withstands force, blocks and strikes
- Tail cap lock release button allows easy, one-handed closing of the baton
- Built with premium all-steel or steel & aerospace aluminum "air" construction for extreme durability and reliability
- Extended tip design allows two-handed manual deployment or conventional inertial opening
- Optional tip with nano-ceramic striker provides glass-breaking and window-breaching capability



NEX 17" (Air) NEX 21" (Air / Steel) NEX 21" (Trainer) NEX 23" (Air / Steel) NEX 26" (Steel) NEX 28" (Steel) NEX 39" (Air)

Specifications	NEX 17" (Air)	NEX 21" (Air / Trainer)	NEX 23" (Air)	NEX 21" (Steel)	NEX 23" (Steel)	NEX 26" (Steel)	NEX 28" (Steel)	NEX 39" (Air)
Extended	17" (413 mm)	21" (509 mm)	23" (584 mm)	21" (503 mm)	23" (584 mm)	26" (660 mm)	28" (712 mm)	39" (1003 mm)
Retracted	7.56" (192 mm)	8.82" (224 mm)	9.80" (250 mm)	8.58" (218 mm)	9.80" (250 mm)	10.82" (275 mm)	11.5" (292 mm)	12.63" (321 mm)
Weight	9.52 oz (270 g)	11.11 oz (315 g)	12.35 oz (350 g)	18.76 oz (532 g)	21.16 oz (600 g)	23.63 oz (670 g)	25.39 oz (720 g)	25.57 oz (725 g)
Material	Body	Alloy Steel + Aerospace Aluminum			Alloy Steel			Steel + Aluminum
	Handle	TPE Rubber						
Impact Resistance	2 m / 6.56 ft							

N19L Quicker

Flashlight Expandable Baton

410 LUMENS

FEATURES

- Combines a tactical flashlight and an expandable baton into a single tool
- High performance LED produces a maximum output of 410 lm
- Switchable to three modes: Two brightness levels and a strobe
- Rotating dial switch for easy one-handed mode selection
- High strength NEX Lock locking mechanism
- Baton tip includes a nano-ceramic glass breaker



Modes	410 lm / 40 lm / strobe
Runtime	1 h 30 min / 9 h / —
Beam Distance	116 m / 35 m / —
Beam Intensity	3364 cd / 306 cd / —
Waterproof	IPX8 (2 m)

Battery	1 x 14850 rechargeable battery (included)
Weight	350 g / 12.34 oz (without battery)
Body Material	Alloy steel and aerospace aluminum
Retracted Length	270 mm
Expanded Length	490 mm

ACCESSORIES

TB1 Tonfa Side Handle



Material	Aluminum alloy (Connection part) + POM (Handle body)
Finish	Type III Hard Anodizing
Dimensions	155 (length) x 36 (Width) x 44 (Height) mm
Compatible Batons	NEX Quicker Series Batons

HG1 Baton Crossguard



Material	Aerospace Aluminum Alloy
Surface Treatment	Type III Hard Anodizing
Weight	65 g / 2.29 oz
Dimensions	108 mm x 108 mm x 37 mm
Compatible Batons	NEX Quicker Series Batons, or batons with a diameter ranging from 26-27 mm



WALKER

Concealable Expanding Baton Series

FEATURES

- Compact expandable batons designed for discreet conceal and undercover carry
- Spring clip allows comfortable, convenient carry without a holster
- Innovative NEX Lock mechanism locks baton securely when expanded
- Tail cap release button allows easy one-handed collaps
- Baton tip includes a nano-ceramic glass breaker



Easily Carried and Concealed



SPECIFICATIONS

	NEX 12" (Air)	NEX 16" (Air)	NEX 20" (Air)	NEX 16" (Steel)
Extended	12" (302 mm)	16" (401 mm)	20" (500 mm)	16" (401 mm)
Retracted	6.22" (158 mm)	7.52" (191 mm)	8.82" (224 mm)	7.52" (191 mm)
Weight	6.35 oz (170 g)	7.41 oz (200 g)	8.82 oz (240 g)	13.23 oz (380 g)
Material	Alloy Steel + Aerospace Aluminum			Alloy Steel
Impact Resistance	2 m / 6.56 ft			



NEX16"/20"

Leather-Handled Concealable Batons

- * State-of-the-art NEX Lock mechanism locks the baton rigidly open and easily withstands force, strikes and thrusts
- * Tail cap lock release button allows easy, one-handed collapsing of the baton
- * Built with premium all-steel or steel & aerospace aluminum "air" construction for extreme durability and reliability
- * Comfortable, non-slip leather covered grip
- * Spring steel clip for concealed carry
- * Tip includes nano-ceramic striker for glass-breaking and window-breaching capability



Specifications	NEX 16" (Air)	NEX 20" (Air)	NEX 16" (Steel)	NEX 18" (Steel)
Extended	16" (401 mm)	20" (500 mm)	16" (401 mm)	18" (458 mm)
Retracted	7.52" (191 mm)	8.82" (224 mm)	7.52" (191 mm)	8.26" (210 mm)
Weight	7.41 oz (200 g)	8.46 oz (240 g)	13.23 oz (380 g)	13.47 oz (382 g)
Material	Alloy Steel + Aerospace Aluminum		Alloy Steel	
Impact Resistance	2 m / 6.56 ft			

N18L Wal / N15L Wal

Self-Defense Portable Baton with Flashlight

410
LUMENS

100
LUMENS

- Combines a tactical flashlight and a concealable expandable baton into a single tool
- Rotating dial switch for easy one-handed mode selection
- Spring clip allows comfortable, convenient carry without a holster
- High strength NEX Lock locking mechanism
- Baton tip includes a nano-ceramic glass breaker



Specifications	N18L Wal	N15L Wal
Modes	410 lm / 40 lm / strobe	100 lm / strobe
Runtime	1 h 30 min / 9 h / -	1 h 15 min / -
Beam Distance	116 m / 35 m / -	60 m / -
Beam Intensity	3364 cd / 306 cd / -	900 cd / -
Waterproof	IPX8 (2 m)	IPX8 (2 m)
Battery	1 x 14850 rechargeable battery (included)	1 x AA battery (included)
Weight	260 g / 9.17 oz (without battery)	202 g / 7.12 oz (without battery)
Body Material	Alloy steel and aerospace aluminum	Aerospace aluminum
Retracted Length	265 mm	235 mm
Expanded Length	474 mm	378 mm



ACCESSORIES

V73

Baton and Flashlight Holster

- Works with NEX Quicker Series batons with HG1 crossguard
- 360° rotatable with 16 locking positions
- Compatible with flashlights or batons with a diameter of 25–32 mm, belts less than 55 mm in width, and MOLLE system.

Compatible Batons	NEX Quicker Series Batons
Compatible Flashlights	25 – 32 mm (Head Dia.)
Compatible Belt Width	≤ 55 mm
Dimensions	156 mm × 54 mm × 65 mm



V72

Quick-Draw Holster

- Designed for duty to easily carry and draw
- 360° degree rotation and 16 angles fixation
- Compatible with various size of batons, supplying adjustable clamp to attach holder on belt more securely

Compatible Batons	NEX Quicker Series Batons
Dimension	137 mm × 56.5 mm × 65 mm
Weight	96 g / 3.38 oz



V69

Nylon MOLLE-Mount Concealable Baton Holster

- Made of nylon material
- Design for NEX Walker batons (16" / 18" / 20")
- Can be mounted on the tactical waistcoat, backpack, waist belt or other equipment with MOLLE webbing

Material	1000D Nylon Fabric
Weight	45 g
Dimensions	180 mm × 40 mm × 40 mm



V68

Leather Concealable Baton Holster

- Made of genuine leather, lightweight and durable
- Designed for NEX Walker series batons
- Compatible with belts up to 50 mm wide
- Ideal for civilian carry

Material	Genuine Leather
Weight	55 g / 1.94 oz
Dimensions	155 mm × 84 mm × 29 mm
Belt Width	≤ 1.77" mm
Compatible Batons	NEX Walker Series Batons



V67

Leather Baton Holster

- Made of genuine leather, lightweight and durable
- Designed for NEX Quicker series batons
- Compatible with belts up to 50 mm wide
- Ideal for civilian carry

Material	Genuine Leather
Weight	63 g / 2.22 oz
Dimensions	180 mm × 110 mm × 35 mm
Belt Width	Width ≤ 50 mm; Thickness ≤ 6 mm
Compatible Batons	NEX Quicker Series Batons



HANDCUFFS

HC20

Training Handcuffs



FEATURES

- * Training handcuffs for maximum ease-of-use
- * Special mechanism allows keyless unlocking in single-lock mode
- * Double-lock mode provides true locking functionality, if needed
- * Made of aerospace-grade aluminum

Weight	235 g / 8.29 oz (without keys)
Material	Aerospace-grade aluminum with steel Double-Lock feature
Inside Perimeter	55 mm to 82 mm
Length	242 ± 2 mm
Keys Included	2
Corrosion Resistance	Level 10



Non-locking Function for Ease of Training



Double-Lock Mode Achieves True Locking Function

HC11

Hinged Handcuffs



FEATURES

- * Double-hinged design for maximum restriction of subject movement
- * Double-Lock feature for improved safety
- * Unique three-tooth ratchet pattern prevents shimmying
- * Made of aerospace-grade aluminum
- * Double-sided keyway allows unlocking from both sides of cuff body

Weight	284 g / 10.01 oz (without keys)
Material	Aerospace-grade aluminum with steel Double-Lock feature
Inside Perimeter	55 mm to 82 mm
Keys Included	227 ± 3 mm
Length	2



Double-Hinge Design



Optional Nylon Handcuff Pouch

HC10

Chain Handcuffs



FEATURES

- * Double-Lock feature for improved safety
- * Unique three-tooth ratchet pattern prevents shimmying
- * Made of aerospace-grade aluminum
- * Double-sided keyway allows unlocking from both sides of cuff body

Weight	255 g / 8.99 oz (without keys)
Material	Aerospace-grade aluminum with steel Double-Lock feature
Inside Perimeter	55 mm to 82 mm
Keys Included	2
Impact Resistance	3 m
Corrosion Resistance	Level 10



High-Security Three-Tooth Ratchet Pattern



Double-Sided Keyway

V11

Handcuff Case



FEATURES

- * Compatible with all handcuff styles
- * Retention strap features both a snap and velcro closure for added security
- * Made of tough 1000D nylon
- * Belt clip allows easy attachment and removal

Material	1000D DuPont™ nylon
Belt Size	≤ 55 mm
Dimension	137 mm × 109 mm × 50 mm
Weight	85 g / 3.0 oz



Dual Retention (Snap and velcro) Holds Cuffs Securely



Belt Clip Allows Easy Attachment and Removal

MULTI-TOOLS



MT20

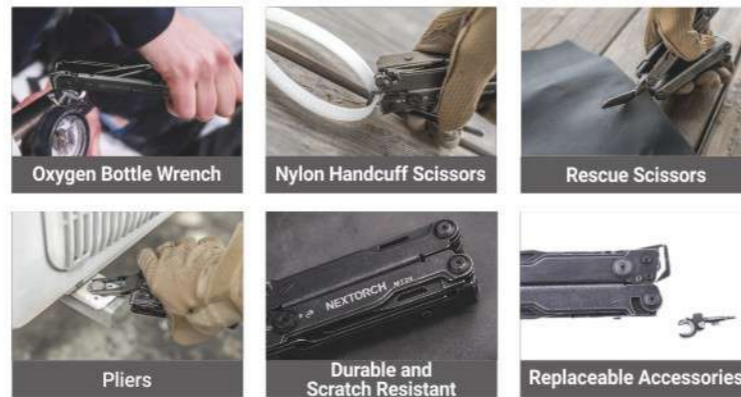
14-in-1 Multifunctional Tool



14

Multifunctions

- 01 Nylon Handcuff Scissors
- 02 Rescue Scissors
- 03 Ruler
- 04 Needle Nose Pliers
- 05 Regular Pliers
- 06 Premium Replaceable Wire Cutters
- 07 Premium Replaceable Hard-wire Cutters
- 08 Cutting Hook
- 09 Replacement Accessories
- 10 Knife
- 11 Saw
- 12 Back Clip
- 13 Oxygen Bottle Wrench
- 14 Bottle Opener



Key Features

- Multiple functions: fire, EMS, outdoor use, ect.
- Twelve practical and flexible functions: rescue scissors, nylon handcuff scissors, cutting hook, and needle-nose pliers etc., Equipped with strong shearing scissors and precision-biting pliers.
- Standard universal handcuff key could be folded for convenient law enforcement.
- Made with stone washing technology for a retro style, it's durable and scratch resistant.

Specification			
Body Material	20Cr13 , 30Cr13 , Yg8		
Size (closed)	109 mm × 39 mm × 28 mm	Weight	268g ± 5g
Blade length	54mm	Blade angle	75°

MT 10

16-in-1 Multi-Tool

16

Multifunctions

- 01 Needlenose Pliers
- 02 Regular Pliers
- 03 Premium Replaceable Wire Cutters
- 04 Premium Replaceable Hard-wire Cutters
- 05 Thick-wire Cutters
- 06 Saw
- 07 Knife
- 08 Phillips Screwdriver
- 09 Rescue Hook
- 10 Can Opener
- 11 Wire Stripper
- 12 Bottle Opener
- 13 Flat Screwdriver
- 14 Glass Breaker
- 15 Scissors
- 16 Ruler



Key Features

- Large, fully functional scissors with 30 mm (1.18 in) blades
- Ultra-hard nano-ceramic glass breaker
- Versatile plier design combines five different functions
- High performance wood saw with two rows of teeth
- Rescue hook for cutting line, seat belts, and webbing

Body Material	30Cr13
Pliers Jaws	30Cr13
Blade Material	50Cr15MoV
Wire-Cutter Blades	K30 (YG8)
Surface Finish	Saw/Scissors: Satin Finish All Others: Bead Blast Finish
Dimension	Close: 110 mm × 40 mm × 21.5 mm
Weight	245 g ± 5 g





NP20

Tactical Pen with Tungsten-Steel Strike Tip

The ultimate in low-profile self-defense tools, this stylish pen is precision machined from 6061-T6 aerospace-grade aluminum and features a tungsten-steel strike tip. Its body has a Type II hard anodized finish and a machined "dragon bone" texture for a secure, non-slip grip. The tungsten-steel strike tip allows it to deliver a targeted impact against an attacker and also functions as an emergency glass breaker. Weighing only 30 g (1.06 oz), this precision writing instrument includes a SCHMIDT Megaline P 950 M ink cartridge.



Body Material	6061-T6 Aerospace Grade Aluminum	Cartridge	SCHMIDT Megaline P 950 M (G2 Specs)
Body Finish	Mil-Spec Type III Hard Anodized	Length	148 mm / 5.8"
Strike Tip Material	Tungsten-steel	Weight	30 g / 1.06 oz (Refill Included)



TACTICAL BELTS

TEX10

Multifunction MOLLE Tactical Belt



- FEATURES**
- * Precision machined aluminum buckle with a 200 kg (441 lb) break strength
 - * Two-step buckle-release mechanism for added security
 - * Double-layer construction features an inner belt and an outer load-bearing layer
 - * Commercial grade high-strength velcro between layers
 - * MOLLE exterior allows easy attachment of holsters, pouches, and accessories
 - * Fully adjustable inner belt to fit a wide range of sizes
 - * Comfortable, breathable honeycomb lining

Material	Inner Belt and Outer MOLLE Platform: Ballistic Nylon
	Buckle: Aerospace aluminum
Dimensions	Inner Belt: 5 cm (2.0 in) wide x 155 cm (61 in) long (fully adjustable length)
	Outer MOLLE Platform: 8 cm (3.2 in) x 95 cm (37.4 in) long
Waist Sizes	Adjustable from 85 - 145 cm
Weight	550 g / 19.4 oz

Belt Accessories

V12

Quick Draw Nylon Handcuff Case

Dimensions	109 mm × 136 mm × 64 mm
Belt Width	≤55 mm
Weight	145 g
Material	Nylon, PA + GF

- * Compatible with all handcuff styles
- * Dual retention (snap and velcro) holds handcuffs securely
- * Multifunctional mount attaches to belts up to 55 mm (2.17 in) wide and MOLLE webbing
- * Includes a nylon key pocket with velcro closure



V13

Quick-Draw Utility Pouch

Dimensions	150 mm × 80 mm × 170 mm
Belt Width	≤55 mm
Weight	220 g
Material	Nylon, PA + GF

- * Two large compartments for storage of critical items
- * Zippered main compartment is divided for easy organization and instant access
- * Multifunctional mount attaches to belts up to 55 mm (2.17 in) wide and MOLLE webbing

V14

Quick-Draw Radio Case

Dimensions	75 mm × 75 mm × 150 mm
Belt Width	≤55 mm
Weight	165 g
Material	Nylon, PA + GF

- * Universal design fits a broad range of radios
- * One-handed size adjustment
- * Durable nylon construction
- * Fits radios up to 73 mm (2.90) wide, 73 mm (2.90 in) thick, and 150 mm (5.91) tall



V21

Pepper Spray Holster

Dimensions	140 mm × 60 mm × 79 mm
Belt Width	≤55 mm
Weight	126 g
Material	PA + GF

- * Accommodates pepper spray canisters 31-38 mm (1.22-1.50 in) in diameter
- * Quick-release locking lever provides both secure carry and rapid one-handed deployment
- * Holster body rotates 360 degrees and locks in 16 positions

V73

Tactical Baton Holster

Dimensions	156 mm × 40 mm × 26 mm
Belt Width	≤55 mm
Weight	120 g
Material	PA + GF

- * Works with NEX Quicker Series batons with HG1 crossguard
- * 360° rotation with 16 locking positions
- * Compatible with flashlights or batons with a diameter of 25-32 mm



V51

Tactical Flashlight Holster

Dimensions	130 mm × 54 mm × 76 mm
Belt Width	≤55 mm
Weight	114 g
Material	PA + GF

- * Compatible with flashlights and batons with a diameter of 25-32 mm (0.98-1.26 in)
- * Quick-release locking lever provides both secure carry and rapid one-handed deployment
- * Allows hands-free use of the flashlight while secured in the holster
- * Holster body rotates 360° and locks in 16 positions



SAMPLE BAGS



Multi-Layered MOLLE Webbing



Handle for Easy Carrying



Two Separate Internal Compartments



Multi Purpose Design for EDC Use

FEATURES

This sample bag is designed to carry Nextorch products. It is convenient for storing and showing our products to customers on the go. The double-sided, multi-layer elasticized compartments and the MOLLE design make it easy to carry a full range of flashlights, batons, and multifunction lights in various sizes, which you can combine freely.

Material	Outside: 1000D Cordura Nylon® Inside: 600D Nylon Inner Sandwich Layer: Sponge Glue Board
Dimensions	380 mm × 300 mm × 85 mm/14.96 × 11.81 × 3.35 in



ENGAGING+INTERACTIVE MERCHANDIZING DISPLAYS

Nextorch merchandizing displays serve as a powerful tool to showcase a variety of products and capture the attention of potential customers.

Nextorch merchandizing displays are carefully designed to combine different products, resulting in eye-catching arrangements that not only enhance visual appeal, but also effectively communicate the brand's message.

Counter Top Displays

- * Made of PETG
- * Easy to assemble
- * Easy to show and remove the products
- * Replaceable image



U Series Desktop Display
2 unit display
DISPLAY DIMENSIONS
15"W x 11"H x 10"D



Flashlight Desktop Display
6 unit display
DISPLAY DIMENSIONS
15"W x 11"H x 11"D



Headlamp Desktop Display
6 unit display
DISPLAY DIMENSIONS
15"W x 11"H x 11"D



Weapon Light Desktop Display
5 unit display
DISPLAY DIMENSIONS
15"W x 11"H x 10"D



NEX-Baton Desktop Display
6 unit display
DISPLAY DIMENSIONS
15"W x 11"H x 11"D

Combined Display

- * Combined to display different products
- * Products display combinations



Headlamps + Weapon Lights



Headlamps + NEX-Baton



Weapon Lights + NEX-Baton

Corrugated Displays



3*3 DISPLAYS

- * Easy to show and remove the products
- * Products can be placed: flashlights, weapon lights, multifunction lights, etc.



DISPLAY DIMENSIONS

- * NO.1: 9"W x 5"H x 5"D
- * NO.2: 9"W x 6"H x 5"D



Mousepad



Ceramic Cup



Lightweight Bag



NEXTORCH



Hat



LIFESTYLE



Umbrella & Recycle Bag



Gift Package



Patch



Sample Bag

COMPATIBILITY



