

Air tools

382 Technical Information

Pneumatic Angle Grinders

384 Belt grinding machine

385 Straight grinder

Power tools

398 Conditioning machine



Product line marking

Product lines are labelled in the table header with the appropriate tabs. Further information on page **14** and **15**.



Technical Information

General information

High performance and low air consumption are the major features of LUKAS air tools. The robust vane motors can be stopped under load without causing any damage.

Speed governors are used to prevent exceeding of the idling speed within the specified tolerance.

The tool design is maintenance and service friendly. It facilitates the change of wear parts.

Compressed air supply

Power tools already achieve maximum performance levels from a flow pressure of 0.63 MPa (= 6.3 bar). We are more than happy to provide advice when it comes to the optimum design of your compressed air supply. Please refer to the technical information for initial specifications on line cross sections (diagram).

Air consumption (see machine data)	Connection thread
0,05–0,5 m³/min	¼" thread
0,15–0,9 m³/min	⅜" thread
0,5–1,5 m³/min	½" thread
0,8–6,0 m³/min	¾" thread

Vane motor lubrication

A maintenance unit consisting of a water trap and lubricator reliably protects the vane motors against wear, reduces the maintenance effort and increases the service life.

Turbo drive lubrication

Machines with a turbo drive are always operated without a lubricator!

As the rotation of the rotor in the machine housing is a widely non-contact motion, the results are particularly low friction losses and higher energy efficiency during grinding and milling.

Ergonomics and safety

Vibration

All air tools are tested and labelled in accordance with the current European noise and vibration directive to protect the user.

Vibrations are recorded and calculated three-dimensionally in this respect.

Ergonomics

When compared to electric power tools, pneumatic tools offer a higher level of performance and lower weight. Ergonomically shaped, insulated handles mean that the machines can be held easily, thus enabling fatigue-free working.

Machining of workpieces which are difficult to access also presents no problem with LUKAS pneumatic tools, as the spindle length, air outlet and valve design of many machines can be optimized to suit user requirements.

Safety

Use is even possible in potentially hazardous atmospheres.

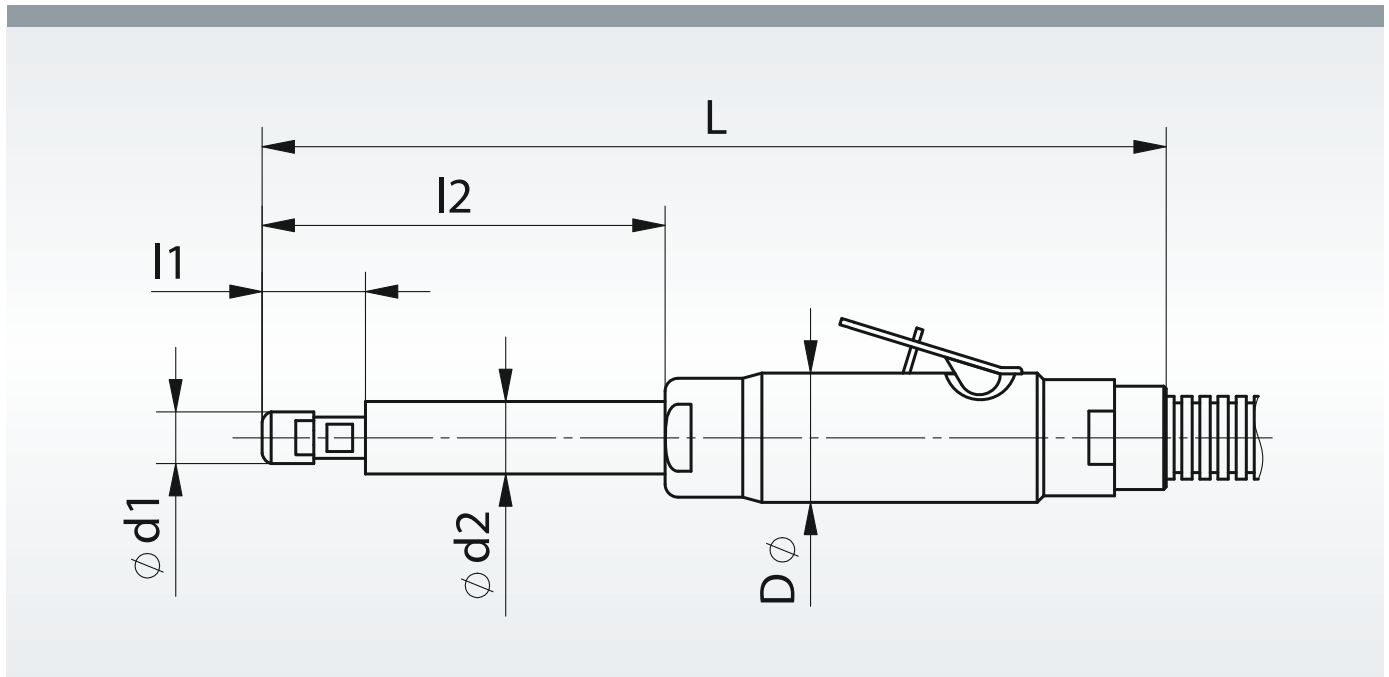
Quality

All machines have a robust aluminium housing and are designed for use in a harsh environment. Motors do not overheat, even during continuous operation at a maximum performance level. In the context of 100% quality control all machines undergo speed and performance measurements prior to delivery.

Safety instruction

Only tools which are safe and approved for operation at the peripheral speeds achieved with respective tools should be used.

Overview of pneumatic angle grinders



Technical specifications

Product name	Rotational speed/minute	Performance in kw	d1 mm	l1 mm	d2 mm	l2 mm	D mm	L mm	Page
AMIN 30 BSH	30.000	0,300	19	28	h = 86		35	220	384
AMIN 12-030 GD	12.000	0,300	16	26	---	---	35	195	385
AMIN 15-030 GD	15.000	0,300	16	26	---	---	35	195	385
AMIN 12-030 GH	12.000	0,300	16	26	---	---	35	195	385
AMIN 15-100 GH	15.300	1,000	24	37	34	148	51	350	386
AMIN 15-070 GH2L	15.300	0,700	24	35	24	440	46	630	387
AMIN 15-100 GHL	15.300	1,000	24	31	24	160	51	360	388
AMIN 19-100 GHL	19.000	1,000	24	31	24	160	51	360	388
AMIN 19-100 GH	19.000	1,000	24	37	34	148	51	350	389
AMIN 19-100 GHK	19.000	1,000	24	44	---	---	51	245	389
AMIN 20-030 GD	20.000	0,300	16	26	---	---	35	195	390
AMIN 23-030 GD	23.000	0,300	16	26	---	---	35	195	390
AMIN 20-030 GH	20.000	0,300	16	26	---	---	35	195	390
AMIN 30-030 GD	30.000	0,300	14	16	---	---	36	190	391
AMIN 30-030 GH	30.000	0,300	14	16	---	---	36	190	391
AMIN 32-027 GD	32.000	0,270	13	20	23	35	29	210	392
AMIN 45-030 GD	45.000	0,300	14	16	---	---	36	190	393
AMIN 45-030 GH	45.000	0,300	14	16	---	---	36	190	393
AMIN 55-011 GD	55.000	0,110	9	14	---	---	20	125	394
AMIN 72-013 GD	72.000	0,130	10	15	---	---	29	165	395
AMIN 70-025 TGD	70.000	0,250	14	16	---	---	42	175	396
AM 07/100 GH	7.600	1,500	63	15	51	130	74	530	397
AM 11/080 GH	10.700	1,100	40	10	47	110	62	498	397



Abrasive belt grinder – insulated

Ordering example: A3993302113



Length: approx. 325 mm
Height: approx. 86 mm
Weight: approx. 0,90 kg
Drive: vane motor

For more technical specifications see page 383.

Description	Valve	Idle speed min ⁻¹	Power consumption KW	Air consump- tion under load m³/min	Belt peripheral speed m/s	Hose-nominal size mm	Product-Number	
AMIN 30 BSH	Lever	30.000	0,3	0,45	28	6	A3993302113	■

Included with the machine:

an abrasive belt mounting arm for long belts in dimension 13 x 305 mm,
inlet and exhaust air hoses plus silencer, collet for 6 mm, spanner

Extra equipment:

collets for Ø 3 mm, 4 mm, 5 mm, 1/8", 3/16", 1/4"
Abrasive belt extensions in various sizes (lengths, widths and roll diameters)
available ex stock.

Available ex-stock:

long belts 13 x 305 mm

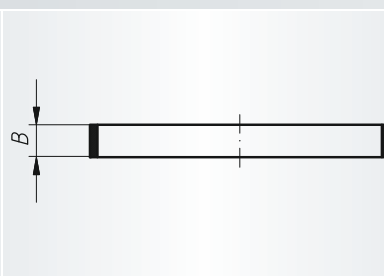
Suited to LUKAS tools:

Please take note of the relevant RPM stated on our packing material.



SBL, finishing belts

Ordering example: A3000130305040T01



Packing unit:

100 pcs. per type
Peripheral speed: 28 m/s
NK = reg. Aluminium Oxide
ZK = Zirconia Alum. Oxide

Description	Grits	B mm	Length mm	Lining	Product-Number	recommended for										
SBLT	ZK 40	13	305	robust-flexible	A3000130305040T01	①	②	③	④	⑤				⑧		■
SBLT	NK 60	13	305	robust-flexible	A3000130305060T	①	②	③	④	⑤	⑥	⑦	⑧			■
SBLT	ZK 60	13	305	robust-flexible	A3000130305060T01	①	②	③	④	⑤				⑧		■
SBLT	NK 80	13	305	robust-flexible	A3000130305080T	①	②	③	④	⑤	⑥	⑦	⑧			■
SBLX	NK 80	13	305	robust	A3000130305080X	①	②	③	④	⑤	⑥	⑦	⑧			■
SBLT	ZK 80	13	305	robust-flexible	A3000130305080T01	①	②	③	④	⑤				⑧		■
SBLT	NK 120	13	305	robust-flexible	A3000130305120T	①	②	③	④	⑤	⑥	⑦	⑧			■
SBLX	NK 120	13	305	robust	A3000130305120X	①	②	③	④	⑤	⑥	⑦	⑧			■


Industry
Straight grinder – insulated
Ordering example: A3993101112


Length: approx. 175 mm
Diameter: 34,5 mm
Weight: approx. 0,90 kg
Drive: vane motor
 Integral speed regulator

For more technical specifications see page 383.

Description	Valve	Idle speed min ⁻¹	Power consumption KW	Air consumption under load m ³ /min	Collet dia Ø mm	Hose-nominal size mm	Product-Number	
AMIN 12-030 GD	Twist	12.000	0,3	0,49	6	8	A3993101112	■
AMIN 12-030 GH	Lever	12.000	0,3	0,49	6	8	A3993102112	■
AMIN 15-030 GD	Twist	15.000	0,3	0,52	6	8	A3993101115003	■

Included with the machine:

inlet and exhaust air hoses plus silencer, 6 mm collet and spanner

Extra equipment:

collets for Ø 3 mm, 4 mm, 5 mm, 1/8", 3/16", 1/4"

Suited to LUKAS tools: Please take note of the relevant RPM stated on our packing material.	Dimension	Page
AMIN 12-030 GD/GH Tungsten Carbide Burrs Burrs of HSS Mounted flap wheels SFV/M Mounted flap wheels SFI Mounted flap wheels SFA Abrasive Belts SBZY Abrasive Belts SBKE Abrasive Rolls SRZY/SRKE Abrasive Caps SK... Abrasive Sleeves SHKE Polishing Points P1 Polishing Points P2 Polishing Points P5	up to Ø 20 mm up to Ø 8 mm Ø 40 mm Ø 30 mm Ø 15 mm, 20 mm, 30 mm up to Ø 30 mm up to Ø 36 mm up to Ø 20 mm up to Ø 21 mm 0885, 1385, 1885 4020 Ø 20 mm Ø 40 mm	from 25 from 63 from 277 271 272 from 303 311 from 317 from 321 329 from 137 from 140 from 153
AMIN 15-030 GD Tungsten Carbide Burrs Burrs of HSS Mounted flap wheels SFI Mounted flap wheels SFA Abrasive Belts SBZY Abrasive Belts SBKE Abrasive Rolls SRZY/SRKE Abrasive Caps SK... Abrasive Sleeves SHKE	up to Ø 16 mm up to Ø 6 mm Ø 30 mm Ø 15 mm, 20 mm, 30 mm up to Ø 25 mm up to Ø 29 mm up to Ø 20 mm up to Ø 16 mm 0885, 1385	from 25 from 63 271 272 from 303 311 from 317 from 321 329



Straight grinder – insulated

Ordering example: A3993102115



Length: approx. 310 mm
Diameter: 52 mm
Weight: approx. 2,3 kg
Drive: vane motor
 Integral speed regulator

For more technical specifications see page 383.

Description	Valve	Idle speed min ⁻¹	Power consumption KW	Air consumption under load m ³ /min	Collet dia Ø mm	Hose-nominal size mm	Product-Number	
AMIN 15-100 GH	Lever	15.300	1	1	6	12	A3993102115	■

Included with the machine:

inlet and exhaust air hoses plus silencer, 6 mm collet and spanner

Extra equipment:

collets for Ø 8 mm, 9 mm, 3/16", 1/4", 5/16"

Suited to LUKAS tools: Please take note of the relevant RPM stated on our packing material.	Dimension	Page
Tungsten Carbide Burrs	up to Ø 16 mm	from 25
Burrs of HSS	up to Ø 6 mm	from 63
Mounted Points	up to Ø 60 mm	from 93
Polishing Points P2	up to Ø 16 mm	from 140
Polishing Points P3	up to Ø 16 mm	from 144
Polishing Points P6	up to Ø 30 mm	from 157
Mounted flap wheels SFL/SFE/SFB/SFT/SFC	up to Ø 40 mm	from 261
Abrasive Caps SK...	up to Ø 16 mm	from 321
Abrasive Rolls SR...	up to Ø 20 mm	from 317
Abrasive Belts SBZY	up to Ø 22 mm	from 303
Abrasive Belts SBKE	up to Ø 29 mm	311


Industry
Straight grinder with spindle extension – insulated
Ordering example: A3993102115002


Length: approx. 615 mm¹⁾
Diameter: 47 mm
Weight: approx. 2,1 kg
Drive: vane motor
 Integral speed regulator

¹⁾ Dimension with two spindle extensions

For more technical specifications see page 383.

Description	Valve	Idle speed min ⁻¹	Power consumption KW	Air consumption under load m ³ /min	Collet dia Ø mm	Hose-nominal size mm	Product-Number	
AMIN 15-070 GH2L	Lever	15.300	0,7	0,7	6	10	A3993102115002	■

Included with the machine:

inlet and exhaust air hoses plus silencer, two spindle extensions
(each 200 mm long), collet 6 mm and spanner

Extra equipment:

spindle extension: 200 mm (max. length of
spindle extensions up to 1.200 mm),
collets for Ø 8 mm, 9 mm, 3/16",
1/4", 5/16"



Suited to LUKAS tools: Please take note of the relevant RPM stated on our packing material.	Dimension	Page
Mounted flap wheels SFL/B/T/E/C	up to Ø 40 mm	from 261
Mounted flap wheels SFI	Ø 30 mm	271
Mounted flap wheels SFA	Ø 15 mm, 20 mm, 30 mm	272
Abrasive Belts SBZY	up to Ø 25 mm	from 303
Abrasive Belts SBKE	up to Ø 29 mm	311
Abrasive Rolls SRZY/SRKE	up to Ø 20 mm	from 317
Abrasive Caps SK...	up to Ø 16 mm	from 321
Abrasive Sleeves SHKE	0885, 1385	329
Polishing Points P1	Ø 32 mm	from 137
Polishing Points P2	Ø 16 mm	from 140



Straight grinder – insulated

Ordering example: A3993102115001



Length: approx. 310 mm
Diameter: 52 mm
Weight: approx. 2,2 kg
Drive: vane motor
 Integral speed regulator

For more technical specifications see page 383.

Description	Valve	Idle speed min ⁻¹	Power consumption KW	Air consumption under load m ³ /min	Collet dia Ø mm	Hose-nominal size mm	Product-Number	
AMIN 15-100 GHL	Lever	15.300	1	1	6	12	A3993102115001	■
AMIN 19-100 GHL	Lever	19.000	1	1	6	12	A3993102119002	■

Included with the machine:

inlet and exhaust air hoses plus silencer, collet 6 mm and spanner

Extra equipment:

collets for Ø 8 mm, 9 mm, 3/16", 1/4", 5/16"

Suited to LUKAS tools: Please take note of the relevant RPM stated on our packing material.	Dimension	Page
AMIN 15-100 GHL Mounted flap wheels SFL/B/T/E/C Mounted flap wheels SFL Mounted flap wheels SFA Abrasive Belts SBZY Abrasive Belts SBKE Abrasive Rolls SRZY/SRKE Abrasive Caps SK... Abrasive Sleeves SHKE	up to Ø 40 mm Ø 30 mm Ø 15 mm, 20 mm, 30 mm up to Ø 25 mm up to Ø 29 mm up to Ø 20 mm up to Ø 16 mm 0885, 1385	from 261 271 272 from 303 311 from 317 from 321 329
AMIN 19-100 GHL Mounted Points Mounted flap wheels SFL Abrasive Belts SBZY Abrasive Belts SBKE Abrasive Rolls SRZY/SRKE Abrasive Caps SK... Abrasive Sleeves SHKE	Ø 50 mm Ø 20 mm up to Ø 19 mm up to Ø 29 mm up to Ø 13 mm up to Ø 13 mm 0885	from 93 from 261 from 303 311 from 317 from 321 329


Straight grinder – insulated
Ordering example: A3993102119


Length AMIN 19-100 GH: approx. 310 mm
Length AMIN 19-100 GHK: approx. 190 mm
Diameter: 52 mm
Weight GH: approx. 2,3 kg
Weight GHK: approx. 1,7 kg
Drive: vane motor
 Integral speed regulator

For more technical specifications see page 383.

Description	Valve	Idle speed min ⁻¹	Power consumption KW	Air consumption under load m ³ /min	Collet dia Ø mm	Hose-nominal size mm	Product-Number	
AMIN 19-100 GH	Lever	19.000	1	1	6	12	A3993102119	■
AMIN 19-100 GHK	Lever	19.000	1	1	6	12	A3993102119001	■

Included with the machine:

inlet and exhaust air hoses plus silencer, collet 6 mm and spanner

Extra equipment:

collets for Ø 8 mm, 9 mm, 3/16", 1/4", 5/16"

Suited to LUKAS tools:

Please take note of the relevant RPM stated on our packing material.

Dimension
Page

Tungsten Carbide Burrs	up to Ø 12 mm	from 25
Burrs of HSS	up to Ø 4 mm	from 63
Mounted Points	up to Ø 50 mm	from 93
Polishing Points P1	up to Ø 50 mm	from 137
Polishing Points P2	up to Ø 12 mm	from 140
Polishing Points P3	up to Ø 10 mm	from 144
Polishing Points P5	up to Ø 50 mm	from 153
Polishing Points P6	up to Ø 16 mm	from 157
Abrasive Caps SK...	up to Ø 13 mm	from 321
Abrasive Rolls SR...	up to Ø 13 mm	from 317
Abrasive Belts SBZY	up to Ø 19 mm	from 303
Abrasive Belts SBKE	up to Ø 29 mm	311



Straight grinder – insulated

Ordering example: A3993101120



Length: approx. 175 mm
Diameter: 34,5 mm
Weight: approx. 0,90 kg
Drive: vane motor
 Integral speed regulator

For more technical specifications see page 383.

Description	Valve	Idle speed min ⁻¹	Power consumption KW	Air consumption under load m ³ /min	Collet dia Ø mm	Hose-nominal size mm	Product-Number	
AMIN 20-030 GD	Twist	20.000	0,3	0,53	6	8	A3993101120	■
AMIN 20-030 GH	Lever	20.000	0,3	0,45	6	8	A3993102120	■
AMIN 23-030 GD	Twist	23.000	0,3	0,54	6	8	A3993101123	■

Included with the machine:

inlet and exhaust air hoses plus silencer, collet 6 mm and spanner

Extra equipment:

collets for Ø 3 mm, 4 mm, 5 mm, 1/8", 3/16", 1/4"

Suited to LUKAS tools: Please take note of the relevant RPM stated on our packing material.	Dimension	Page
AMIN 20-030 GD/GH Tungsten Carbide Burrs Burrs of HSS Mounted flap wheels SFL Abrasive Belts SBZY Abrasive Belts SBKE Abrasive Rolls SRZY/SRKE Abrasive Caps SK... Abrasive Sleeves SHKE Mounted Points Shank 6 mm Polishing Points P2	up to Ø 12 mm up to Ø 4 mm Ø 20 mm up to Ø 19 mm up to Ø 29 mm up to Ø 13 mm up to Ø 13 mm 0885 Ø 22 mm, 25 mm, 32 mm, 40 mm Ø 13 mm	from 25 from 63 from 261 from 303 311 from 317 from 321 329 from 93 from 140
AMIN 23-030 GD Tungsten Carbide Burrs Burrs of HSS Abrasive Belts SFL Abrasive Belts SBZY Abrasive Rolls SRZY/SRKE Abrasive Caps SK... Abrasive Sleeves SHKE Mounted Points Polishing Points P1 Polishing Points P2 Polishing Points P5	up to Ø 12 mm up to Ø 4 mm Ø 20 mm up to Ø 15 mm up to Ø 13 mm up to Ø 13 mm 0885 up to Ø 40 mm Ø 10–20 mm Ø 5–10 mm Ø 8–20 mm	from 25 from 63 from 261 from 303 from 317 from 321 329 from 93 from 137 from 140 from 153


Industry
Straight grinder – insulated
Ordering example: A3993101130


Length: approx. 175 mm
Diameter: 34,5 mm
Weight: approx. 0,70 kg
Drive: vane motor
 Integral speed regulator

For more technical specifications see page 383.

Description	Valve	Idle speed min ⁻¹	Power consumption KW	Air consumption under load m ³ /min	Collet dia Ø mm	Hose-nominal size mm	Product-Number	
AMIN 30-030 GD	Twist	30.000	0,3	0,45	6	6	A3993101130	■
AMIN 30-030 GH	Lever	30.000	0,3	0,45	6	6	A3993102130	■

Included with the machine:

inlet and exhaust air hoses plus silencer, collet 6 mm and spanner

Extra equipment:

collets for Ø 3 mm, 3,25 mm, 4 mm, 5 mm, 1/8", 3/16", 1/4"

Suited to LUKAS tools: Please take note of the relevant RPM stated on our packing material.		Dimension	Page
Tungsten Carbide Burrs		up to Ø 8 mm	from 25
Burrs of HSS		up to Ø 3 mm	from 63
Mounted Points		up to Ø 32 mm	from 93
Polishing Points P1		up to Ø 32 mm	from 137
Polishing Points P2		up to Ø 10 mm	from 140
Polishing Points P3		up to Ø 10 mm	from 144
Polishing Points P5		up to Ø 32 mm	from 153
Polishing Points P6		up to Ø 12 mm	from 157
Abrasive Caps SK...		up to Ø 10 mm	from 321
Abrasive Belts SBZY		up to Ø 12 mm	from 303



Straight grinder, insulated

Ordering example: A3993101132



Length: approx. 206 mm
Body diameter: approx. 30 mm
Spindle casing diameter: approx. 23 mm
Weight: approx. 0,40 Kg
Drive: vane motor
Partial front exhaust (can be restricted)

For more technical specifications see page 383.

Description	Valve	Idle speed min ⁻¹	Power consumption KW	Air consumption under load m ³ /min	Collet dia Ø mm	Hose-nominal size mm	Product-Number	
AMIN 32-027 GD	Twist	32.000	0,27	0,3	6	6	A3993101132	■

Included with the machine:

inlet and exhaust air hoses plus silencer, collet 6 mm and spanner

Extra equipment:

collets for Ø 3 mm, 1/8", 1/4"

Suited to LUKAS tools: Please take note of the relevant RPM stated on our packing material.	Dimension	Page
Tungsten Carbide Burrs	up to Ø 8 mm	from 25
Burrs of HSS	up to Ø 3 mm	from 63
Mounted Points	up to Ø 32 mm	from 93
Polishing Points P1	up to Ø 32 mm	from 137
Polishing Points P2	up to Ø 10 mm	from 140
Polishing Points P3	up to Ø 10 mm	from 144
Polishing Points P5	up to Ø 32 mm	from 153
Polishing Points P6	up to Ø 12 mm	from 157
Abrasive Caps SK...	up to Ø 10 mm	from 321
Abrasive Belts SBZY	up to Ø 12 mm	from 303


Straight grinder – insulated
Ordering example: A3993101145


Length: approx. 175 mm
Diameter: 34,5 mm
Weight: approx. 0,70 kg
Drive: vane motor

For more technical specifications see page 383.

Description	Valve	Idle speed min ⁻¹	Power consumption KW	Air consumption under load m ³ /min	Collet dia Ø mm	Hose-nominal size mm	Product-Number	
AMIN 45-030 GD	Twist	45.000	0,3	0,5	6	6	A3993101145	■
AMIN 45-030 GH	Lever	45.000	0,3	0,5	6	6	A3993102145	■

Included with the machine:

inlet and exhaust air hoses plus silencer, collet 6 mm and spanner

Extra equipment:

collets for Ø 3 mm, 3,25 mm, 4 mm, 5 mm, 1/8", 3/16", 1/4"

Suited to LUKAS tools:

Please take note of the relevant RPM stated on our packing material.

Dimension
Page

Tungsten Carbide Burrs	up to Ø 6 mm	from 25
Mounted Points	up to Ø 20 mm	from 93
Polishing Points P1	up to Ø 20 mm	from 137
Polishing Points P2	up to Ø 6 mm	from 140
Polishing Points P3	up to Ø 6 mm	from 144
Polishing Points P5	up to Ø 20 mm	from 153
Polishing Points P6	up to Ø 10 mm	from 157
Abrasive Caps SK...	up to Ø 5 mm	from 321
Abrasive Belts SBZY	up to Ø 12 mm	from 303



Straight grinder – insulated

Ordering example: A3993101155



Length: approx. 130 mm
Diameter: 16 mm
Weight: approx. 0,24 kg
Drive: vane motor

For more technical specifications see page 383.

Description	Valve	Idle speed min ⁻¹	Power consumption KW	Air consumption under load m ³ /min	Collet dia Ø mm	Hose-nominal size mm	Product-Number	
AMIN 55-011 GD	Twist	55.000	0,11	0,15	3	5	A3993101155	■

Included with the machine:

inlet and exhaust air hoses plus silencer, collet 3 mm and spanner

Extra equipment:

collets for Ø 2 mm, 3,25 mm, 1/8", 3/32"

Characteristics:

- Highest powered machine in its class
- Compact design
- Lockable rotary switch

Suited to LUKAS tools:

Please take note of the relevant RPM stated on our packing material.

Dimension

Page

Tungsten Carbide Burrs	up to Ø 5 mm	from 25
Mounted Points	up to Ø 16 mm	from 93
Polishing Points P1	up to Ø 16 mm	from 137
Polishing Points P2	up to Ø 5 mm	from 140
Polishing Points P5	up to Ø 16 mm	from 153
Abrasive Caps SK...	up to Ø 5 mm	from 321
Abrasive Belts SBZY	up to Ø 10 mm	from 303


Straight grinder – insulated
Ordering example: A3993101172


Length: approx. 154 mm
Diameter: 27,5 mm
Weight: approx. 0,45 kg
Drive: vane motor

For more technical specifications see page 383.

Description	Valve	Idle speed min ⁻¹	Power consumption KW	Air consumption under load m ³ /min	Collet dia Ø mm	Hose-nominal size mm	Product-Number	
AMIN 72-013 GD	Twist	72.000	0,13	0,21	3	5	A3993101172	■

Included with the machine:

inlet and exhaust air hoses plus silencer, collet 3 mm and spanner

Extra equipment:

collets for Ø 2 mm, 3,25 mm, 1/8", 3/32"

Suited to LUKAS tools: Please take note of the relevant RPM stated on our packing material.	Dimension	Page
Tungsten Carbide Burrs	up to Ø 4 mm	from 25
Mounted Points	up to Ø 13 mm	from 93
Polishing Points P1	up to Ø 13 mm	from 137
Polishing Points P2	up to Ø 4 mm	from 140
Polishing Points P5	up to Ø 13 mm	from 153



Turbo driven straight grinder – insulated

Ordering example: A3993101170



Length: approx. 170 mm
Diameter: Ø 20,6 mm, Ø 41,5 mm
Weight: approx. 0,6 kg
Drive: turbo
 Integral speed regulator

For more technical specifications see page 383.

Description	Valve	Idle speed min ⁻¹	Power consumption KW	Air consumption under load m ³ /min	Collet dia Ø mm	Hose-nominal size mm	Product-Number	
AMIN 70-025 TGD	Twist	70.000	0,25	0,43	3	6	A3993101170	■

Features:

- **Oil-free** and low maintenance
- Optimum weight for performance
- Integrated speed controller
- Automatic braking system to prevent overrun
- Lockable rotary switch

Included with the machine:

inlet and exhaust air hoses plus silencer, collet 3 mm and spanner

Extra equipment:

collets for Ø 4 mm, 5 mm, 6 mm, 1/8", 3/16", 1/4"

Suited to LUKAS tools: Please take note of the relevant RPM stated on our packing material.	Dimension	Page
Tungsten Carbide Burrs	up to Ø 4 mm	from 25
Mounted Points	up to Ø 13 mm	from 93
Polishing Points P1	up to Ø 8 mm	from 137
Polishing Points P2	up to Ø 4 mm	from 140
Polishing Points P5	up to Ø 6 mm	from 153


Straight grinder for grinding wheels tapered both sides
Ordering example: A79901021076

AM 07/100 GH

Length: approx. 530 mm
Diameter: 74 mm
Weight: approx. 3,8 kg
Drive: vane motor; Integral speed regulator

AM 11/080 GH

Length: approx. 498 mm
Diameter: 62 mm
Weight: approx. 2,2 kg
Drive: vane motor; Integral speed regulator

For more technical specifications see page 383.

Description	Valve	Idle speed min ⁻¹	Power consumption KW	Air consumption under load m ³ /min	max. grinding wheel Ø mm	tool fitting mm	Hose-nominal size mm	max. peripheral speed m/s	Product-Number	
AM 07/100 GH	Lever	7.600	1,5	1,6	125 x 25	20	13	50	A79901021076	■
AM 11/080 GH	Lever	10.700	1,1	1,3	80 x 20	20	13	50	A39901012115001	■

Included with the machine:

connector for inlet hose with internal Ø 13 mm, mounting flange to suit grinding wheels tapered both sides and spanner

These straight grinders in conjunction with LUKAS grinding wheels are ideal for removing weld seams and flashes on castings. Grinding with double-sided tapered fettling wheels is permitted without the use of a wheel guard, but only when the special flanges are used; wheel blotters are not necessary. This type of machine is

equipped with safety flanges. Both flanges cannot be loosened due to the rotational direction of the spindle; even if the machine becomes jammed, the wheel will not become loose.

Suited to LUKAS tools:

Please take note of the relevant RPM stated on our packing material.

Dimension
Page
AMIN 07/100 GH

Grinding wheel SE4

Ø 100–125 mm, Bore 20 mm

208

AMIN 11/080 GH

Grinding wheel SE4

Ø 80 mm, Bore 20 mm

208



Conditioning machine

Ordering example: A3995ESM1310



Weight: approx. 2,8 kg

Description	Idle speed min-1	Power input W	Max. tool diameter Ø mm	Tool width mm	Hole size mm	Product-Number	
ESM 1310	1.300 - 3.050	1.300	120	100	19	A3995ESM1310	■

In conjunction with the appropriate tool, ideal for:

- Satin finishing
 - Polishing
 - Smoothing
 - Matt finishing
- Conditioning
 - Brushing
 - Deburring

Special features :

- Highly resilient motor (stable)
- Dual gear reduction (long service life)
- Dust-protected bearings (low wear)

Versatility due to electric motor allowing a wide selection of spindle speeds. In conjunction with the optimal tooling, a shadow free and uniform surface can be achieved on metal, wood and plastic.

Electronic control:

- Soft start
- Infinitely variable speed control
- Temperature and overload cut-off

Suited to LUKAS tools: Please take note of the relevant RPM stated on our packing material.	Dimension	Page
Polishing Roll P6	100 x 50 mm, 100 x 100 mm	from 160
Grinding Rolls SBZY	100 x 100 mm	312
Flap Rolls LWL, LWV, LWM, LWF	100 x 50 mm, 100 x 100 mm	from 297

Material classification

1	STEELS AND CAST STEELS Rm up to 800 N/mm ²
	• common structural steels
	• free cutting steels
	• case hardened steels
	• fine grained structural steels
	• extruded steels
	• toughened structural steels
	• boiler plate
	• nitrided steels
	• cast steels
	• heat treated steels
	• heat resistant structural steels
2	ALLOYED, TEMPERED STEELS Rm 800 up to 1200 N/mm ²
	• case hardened steels
	• spring steels
	• fine grained structural steels
	• nitrided steels
	• heat treated steels
	• wear resistant steels
	• bearing steels
3	TOOL STEELS Rm up to 1300 N/mm ²
	• 60 - 65 HRC
	• high-speed steels
	• non-alloyed tool steels
	• cold working tool steels
	• hot working tool steels
4	RUST, ACID AND HEAT RESISTANT STEELS AND CAST STEELS
	• austenitic
	• ferritic
	• ferritic-austenitic
	• heat-resistant
	• martensitic
	• stainless, sulphurized

5	CAST IRON
6	ALUMINIUM, MAGNESIUM AND COPPER ALLOYS
	• over 300 HB
	• 200-300 HB
	• up to 200 HB
	• over 15% Si
	• 10-15% Si
	• 0,5 -10% Si
	• below 0,5% Si
7	TITANIUM AND NICKEL ALLOYS
	• Rm 900 up to 1500 N/mm ²
	• Rm up to 900 N/mm ²
8	PLASTICS, WOOD, RUBBER
9	GLASS / CARBIDES
10	STONE / TILES / GAS CEMENT
11	CONCRETE / REINFORCED CONCRETE
12	CERAMIC / FLOOR TILES
13	MARBLE
14	GRANITE
15	FRESHLY POURED CONCRETE
16	ASPHALT

- best suitable
- suitable
- delivery ex-stock
- ▲ delivery on request

Safety Symbols

(Depending on the product these symbols may vary)



Wear eye protection



Wear hearing protection



Wear a respirator



Read the instructions



Wear gloves



Only permitted with a back-up pad



Not permitted for wet grinding



Not permitted for face grinding



Do not use if damaged



Not permitted for hand-held or manually-guided grinding