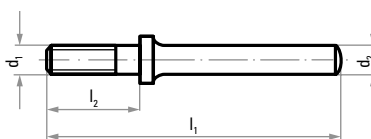


ACCESSORIES AND RETAIL TRADE

- 9.1 Accessories
- 9.2 Assortments
- 9.3 Retail trade

316–318
319–323
324–333

Arbors for felt polishing wheels



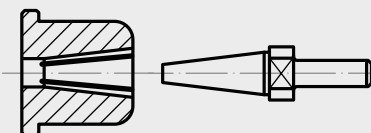
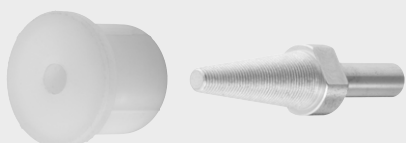
★★☆

Included (per arbor):

- two washers, diameter 18 mm
- two washers, diameter 30 mm
- one hex nut

Product number	Description	d ₁	l ₂ mm	d ₂ mm	l ₁ mm	n _{max} rpm	Pack contains
A1630780	ASB 780	M6	20	6	63	7,000	5
A1630781	ASB 781	M6	30	6	73	7,000	5

Mounting system for polishing wheels

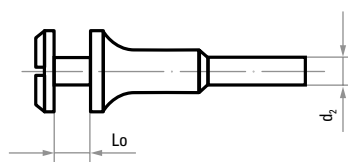
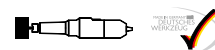


The mounting system for polishing wheels consists of a plastic sleeve (MCA) and a mounting arbor with 8 mm diameter shank (K25), which is solely applicable to shape SE1 in the dimensions 10010 B 25 and 10020 B 25. This system is not designed to be used for polishing wheels with larger diameters. The maximum cutting speed for this mounting system is 10 m/s. This results in a maximum spindle speed of 1900 rpm with a wheel diameter of 100 mm.

★★☆

Product number	Description	Pack contains
A6981008000	Mounting system MCA + K25 H	1

Arbors for small cutting and rough grinding wheels

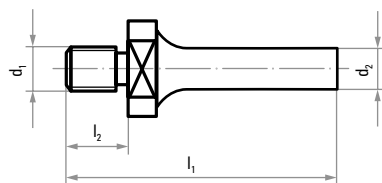


★★☆

Product number	Description	Tool internal diameter mm	L ₀ mm	d ₂ mm	Pack contains
A36600060604	ASB 6/6	6	0–4	6	1
A36600061004	ASB 6/1	10	0–4	6	1
A36600081048	ASB 8/10	10	4–8	8	1



Arbors for tools with an internal thread

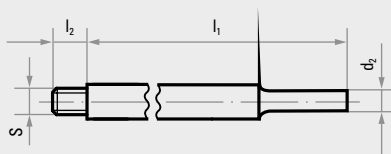


★★☆

Product number	Description	d ₁	l ₂ mm	d ₂ mm	l ₁ mm	Pack contains
A16303422	ASB 342 B	M10	12	6	52	5
A16303423	ASB 342 C	M12	14	6	54	5
A16303424	ASB 342 D	M8	10	6	50	5
A16303442	ASB 344 B	M10	12	8	52	5
A16303443	ASB 344 C	M12	14	8	54	5
A16303452	ASB 345 B	M10	12	10	52	5



Tool adapters for SFI mounted flap wheels



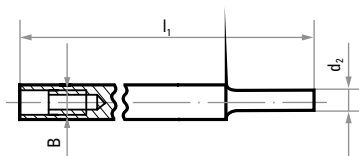
▶ only for use with the LUKAS mounted flap wheels on [page 172](#)

★★☆

Product number	Description	d ₁ mm	l ₁ mm	S	l ₂ mm	Pack contains
A36300404	WADI 0404	6	80	M4	4	1
A36300407	WADI 0407	6	80	M4	7	1
A36300609	WADI 0609	6	100	M6	9	1
A36300612	WADI 0612	6	100	M6	12	1



Tool adapter for SFA mounted flap wheels

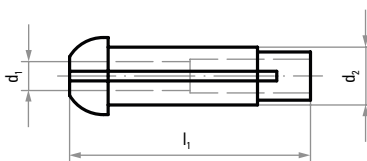
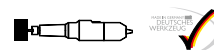


▶ only for use with the LUKAS mounted flap wheels on [page 173](#)

★★☆

Product number	Description	d ₂ mm	l ₁ mm	B	Pack contains
A36300518	WADA 05	6	100	M5	1

Reducing bush



★★☆

Product number	Description	d ₁ mm	d ₂ mm	l ₁ mm	Pack contains
A3630006	SP 6	3	6	25	5
A3630008	SP 8	6	8	30	1

Sharpening stones



★★☆

RU 1–4 are particularly suitable for:

- profiling
- sharpening
- dressing

of bonded grinding and polishing tools

Product number	Description	Quality	L mm	B mm	C mm	Pack contains
A20430000118	RU 1	SICGR 60 O V23/green=fine	50	25	15	5
A20430000122	RU 1	SICGR 24 O V23/dark=coarse	50	25	15	5
A20430000218	RU 2	SICGR 60 O V23/green=fine	100	30	15	5
A20430000222	RU 2	SICGR 24 O V23/dark=coarse	100	30	15	5
A20430000318	RU 3	SICGR 60 O V23/green=fine	100	50	25	5
A20430000322	RU 3	SICGR 24 O V23/dark=coarse	100	50	25	5
A20430000418	RU 4	SICGR 60 O V23/green=fine	150	50	25	5
A20430000422	RU 4	SICGR 24 O V23/dark=coarse	150	50	25	5
Recommended for: ● Stone/Construction material						
A2043150251608	RU 5	EKW 100 E (9) V40	150	25	16.5	5
A2043200502508	RU 6	EKW 100 E (9) V40	200	50	25	5
Recommended for: ● Steel						

AVAILABLE DIMENSIONS

Shape	Length mm	Width mm	Height mm
	25	15	5–30
	44	35	18–30
	48	19	5–30
	50	25	10–35
	90	70	20–35
	100	30	10–35
	100	50	10–35
	120	10	5–35

Shape	Length mm	Width mm	Height mm
	150	25	10–35
	150	50	10–35
	200	50	10–35
 Half-round	216	78	20–35
	150	13	5–35

► For detailed information about sharpening stones, please refer to **page 95**.



Carbide burrs assortments



F10 S3
Z7 Steel

F10 S6
Z7 Steel

Assortment
Z42 Inox/Steel

Assortment
Z9 Alu

Assortment
Z9 Alu

- Always the right tool to hand. LUKAS' practical assortment of tools means you always have exactly what you need.
- perfectly suited for testing different tools
- just as suitable for use in the home, hobby workshop or in industry



Product number	Description	Cut	Shank diameter mm	Contents per pack	Pack contains		
A10390010	F10 S3	Z7 Steel	3	10 parts: HFA 0313 HFC 0613 HFG 0313 HFF 0313	HFA 0613 HFD 0302 HFG 0613 HFC 0313 HFD 0605 HFM 0613	1	
A1039001006	F10 S6	Z7 Steel	6	10 parts: HFAS 0616 HFC 1225 HFD 1210 HFF 0820	HFAS 1225 HFC 1225 HFG 0618 HFF 1225	HFC 0616 HFD 0605 HFG 1225	1
Recommended for: <input type="radio"/> Steel <input checked="" type="radio"/> Cast material <input type="radio"/> Titanium							
A1039001020	Assortment	Z42 Inox/Steel	6	10 parts: HFA 0616 HFC 1225 HFG 0618 HFF 1225	HFA 1225 HFD 0605 HFG 1225	HFC 0616 HFD 1210 HFF 0618	1
Recommended for: <input checked="" type="radio"/> Inox/Steel <input type="radio"/> Steel <input checked="" type="radio"/> Cast material							
A1039000509	Assortment	Z9 Alu	3	5 parts: HFA 0313 HFF 0313	HFC 0313 HFG 0313	HFD 0403	1
A10390005096	Assortment	Z9 Alu	6	5 parts: HFA 0616 HFF 0618	HFC 0616 HFD 0605	HFM 0618	1
Recommended for: <input checked="" type="radio"/> Aluminium <input type="radio"/> Plastic/Wood <input type="radio"/> Titanium							



ZX Universal carbide burrs assortments

- Always the right tool to hand. LUKAS' practical assortment of tools means you always have exactly what you need.
- perfectly suited for testing different tools

- just as suitable for use in the home, hobby workshop or in industry
- the all-round burr for universal applications, with cross cut for high performance



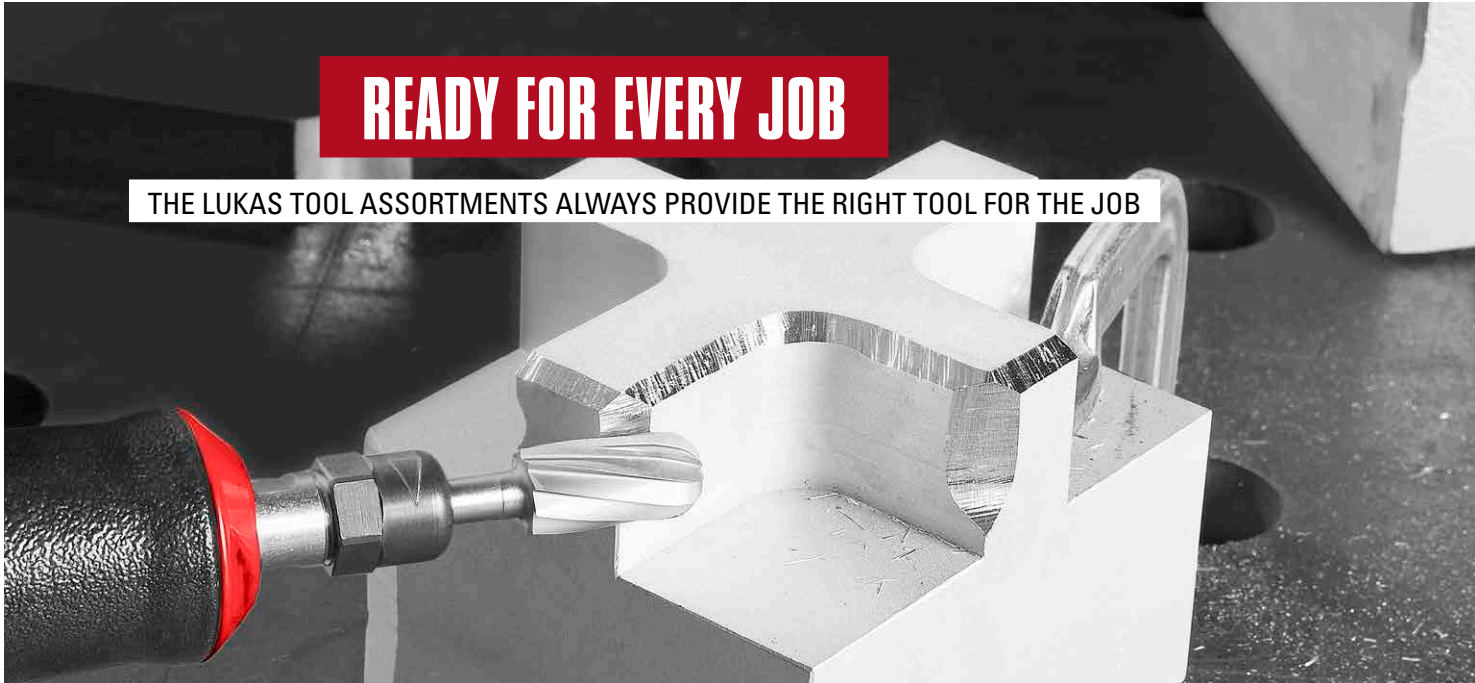
F5 S3 BASE-X



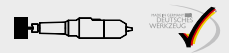
Product number	Description	Cut	Shank diameter mm	Contents per pack	Pack contains		
A10390053	F5 S3 BASE-X	ZX	3	5 parts: HFA 0313 HFF 0313	HFC 0313 HFG 0313 HFD 0605	1	
A10390056	F5 S6 BASE-X	ZX	6	5 parts: HFA 1225 HFF 1225	HFC 1225 HFG 1225	HFD 1210	1
Recommended for: <input type="radio"/> Steel <input checked="" type="radio"/> Cast material <input checked="" type="radio"/> Inox/Steel <input type="radio"/> Titanium							

READY FOR EVERY JOB

THE LUKAS TOOL ASSORTMENTS ALWAYS PROVIDE THE RIGHT TOOL FOR THE JOB



HSS burrs assortments



F1



F3



F4

- Always the right tool to hand. LUKAS' practical assortment of tools means you always have exactly what you need.
- perfectly suited for testing different tools
- just as suitable for use in the home, hobby workshop or in industry

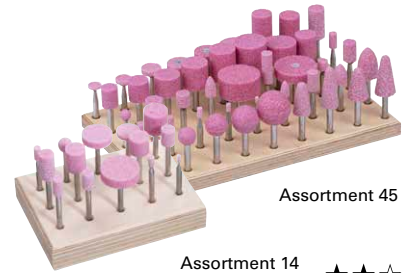
★★☆

Product number	Description	Cut	Shank diameter mm	Content per pack	Pack contains		
A1239000110	F1	Z5	3	10 parts: MF 807 MF 845 MF 864 MF 874	MF 813 MF 850 MF 866 MF 841 MF 853 MF 872	1	
A12390003	F3	Z3	6	10 parts: MFA 0616 MFD 0403 MFG 1230 MFM 0618	MFA 1225 MFD 1210 MFH 1230	MFC 1225 MFE 1220 MFK 0620	1
A12390004	F4	Z3/Z5	6	20 parts: Z3: MFA 0616 MFC 1225 MFE 1220 MFG 1230 MFM 0618 MFN 1230 Z5: MFA 0304 MFN 0606	MFA 1013 MFD 0807 MFE 1625 MFK 1230 MFM 1230 MFA 0607	MFA 1225 MFD 1210 MFG 1220 MFL 1630 MFN 1213 MFN 0303	1

Recommended for: ● Steel ● Aluminium



EKR mounted point assortments



- Always the right tool to hand. LUKAS' practical assortment of tools means you always have exactly what you need.
- perfectly suited for testing different tools
- just as suitable for use in the home, hobby workshop or in industry
- for use on structural steel, for rough grinding and finishing

- top results with regular aluminium oxide
- extremely hard and sharp for an impressively long tool life
- also machines hard materials efficiently

Product number	Description	Quality	Shank diameter mm	Content per pack	Pack contains
A204700001402	Assortment 14	EKR	3 x 30	14 parts: ZY 0205 ZY 0306 ZY 0408 ZY 0510 ZY 0610 ZY 0810 ZY 0816 ZY 1010 ZY 1013 ZY 1313 KU 0808 ZY2 1303 ZY2 1604 ZY2 2006	1
A204600000202	Assortment 45	EKR	6 x 40	45 parts: ZY 0306 ZY 0510 ZY 0408 ZY 0610 ZY 0810 ZY 0816 ZY 1010 ZY 1020 ZY 1032 ZY2 1303 ZY 1313 ZY 1320 ZY2 1604 ZY 1616 ZY 1620 ZY 1632 ZY2 2006 ZY 2020 ZY 2025 ZY 2032 ZY 2040 ZY2 2506 ZY2 2510 ZY 2520 ZY 2525 ZY 2532 ZY2 3208 ZY 3220 ZY 3232 ZY2 4010 ZY 4020 SP 0816 SP 1020 SP 1320 SP 2032 KE 1632 KE 1640 KE 2032 KE 2040 KU 1010 KU 1313 KU 1616 KU 2020 KU 2525 KU 3232	1

Recommended for: ● Steel



Mounted point assortments, mini mounted points



- Always the right tool to hand. LUKAS' practical assortment of tools means you always have exactly what you need.
- perfectly suited for testing different tools
- just as suitable for use in the home, hobby workshop or in industry

Product number	Description	Quality	Shank diameter mm	Content per pack	Pack contains
A204800003611	Assortment 36	EKBR	3 x 30	36 parts: D1 D2 D3 D4 D5 D6 D7 D8 D9 D10 D11 D12 D13 D14 D15 D16 D17 D18 D19 D20 D21 D22 D23 D24 D25 D26 D27 D28 D29 D30 D31 D32 D33 D34 D35 D36	1
A204800003602	Assortment 36	EKR	3 x 30	36 parts: D1 D2 D3 D4 D5 D6 D7 D8 D9 D10 D11 D12 D13 D14 D15 D16 D17 D18 D19 D20 D21 D22 D23 D24 D25 D26 D27 D28 D29 D30 D31 D32 D33 D34 D35 D36	1

Recommended for: ● Steel

NDW mounted point assortment

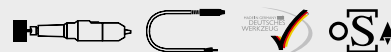


- Always the right tool to hand. LUKAS' practical assortment of tools means you always have exactly what you need.
- perfectly suited for testing different tools
- just as suitable for use in the home, hobby workshop or in industry
- optimised grain combinations for unhardened and hardened tool steel
- high quality grain types for efficient machining of unhardened tool steel

★★★

Product number	Description	Quality	Shank diameter mm	Content per pack	Pack contains
A201000000353	Assortment 10	NDW	3 x 30	10 parts: ZY 0408 ZY 1013 KU 0404 WR 1013 ZY 0610 SP 0510 KU 0606 ZY 0810 SP 0810 KU 0808	1
Recommended for: ● Steel					

Group P1 polishing points assortment



- ideal for finishing cast materials, hardened and unhardened, alloyed and non-alloyed steel
- manufactured in line with DIN 69170
- a match for all polishing requirements
- 14 different shapes for quick tool change

★★☆

Product number	Description	Content per pack	Pack contains
A2600114	Assortment 114	14 parts: P1ZY 0408.03 P1ZY 1010.03 P1ZY 1316.03 P1ZY 0510.03 P1ZY 1013.03 P1ZY 1604.03 P1ZY 0610.03 P1ZY 1016.03 P1ZY 1616.03 P1ZY 0710.03 P1ZY 1303.03 P1ZY 2006.03 P1ZY 0810.03 P1ZY 1313.03	1
Recommended for: ● Inox/Steel ● Steel ● Cast material ● Titanium			



THE RIGHT ABRASIVE CAP FOR EVERY CHALLENGE

640 ABRASIVE CAPS AND 23 MANDRELS IN A SINGLE ASSORTMENT



WS abrasive cap assortment



★★☆

- consists of 640 abrasive caps and 23 mandrels
- box outer dimensions: 372 mm x 189 mm x 46 mm

Product number	Description	Quantity	Content	Pack contains
A210000065001	WS 65 NKS	50 pieces 100 per pack 50 per pack 20 per pack 10 pieces	Abrasive caps, grain NKS 150: SKKES 0515 SKZYS 0510 SKWRS 0511 SKWKES 0511 SKZYS 0712 SKWRS 0713 SKWKES 0713 SKZYS 1015 SKWRS 1015 SKKES 1125	1
		20 pieces 10 per pack 15 per pack	Abrasive caps, grain NKS 80: SKWKES 1015 SKZYS 1317 SKWRS 1319 SKWKES 1319 SKWKES 1626 SKWRS 1626 SKKES 1632	
		2 per pack 1 per pack	Mandrel, shank 3 mm: GTZY 0510 GTWR 0511 GTWK 0511 GTZY 0712 GTWR 0713 GTWK 0713 GTZY 1015 GTWR 1015 GTWK 1015 GTZY 1317 GTWR 1319 GTWK 1319	
		1 per pack	Mandrel, shank 6 mm: GTKE 0515 GTKE 1125 GTWK 1626 GTWR 1626 GTKE 1632	

Recommended for: ● Inox/Steel ● Steel ● Aluminium ● Cast material ● Plastic/Wood ● Titanium

RETAIL TRADE SELECTION

Take advantage of the LUKAS service for retailers

As retailers, you know exactly what your customers want. Therefore you want to present and sell LUKAS products in a way that speaks to your customers. We have just the right thing

for you: the LUKAS presentation stand will help you boost your sales of industrial tools for cutting, milling, grinding and polishing for the long term.



THE LUKAS DISPLAY WALL

Stable, self-supporting presentation stand with perforated panel. Assemble your own, customised display panel with hook hangers for Euro hole packaging, hook hangers for all products with a hole, a brochure dispenser for further information or suspended shelves for boxes to display products in a professional way.

CARDBOARD COUNTER DISPLAY FOR CUTTING DISCS OR MOUNTED FLAP WHEELS

Presentation aid with quick assembly for presenting unique LUKAS mounted flap wheels or cutting and grinding discs on your sales counter. Available for tools with a diameter of 115 mm or 125 mm.

COUNTER DISPLAY FOR TUNGSTEN CARBIDE BURRS

Lockable display for presentation and individual sale of valuable LUKAS tungsten carbide burrs with a 3 mm or 6 mm shank. Place it on your sales counter or shelves.

OUR INDIVIDUAL PACKAGING

Eye-catching and informative individual packaging for the most popular LUKAS tools such as flap discs from the patented iQ series, tungsten carbide burrs, mounted flap wheels made of abrasive material, abrasive fleece or a combination of the two, as well as our mounted points selection for steel or inox. All of these are individually packaged and come with a Euro hole, available for your customised "display module" just like our cutting discs, diamond cutting discs, grinding discs and conventional flap discs, which you can simply hang on the display.

DISPLAY ACCESSORIES

Presenting LUKAS tools made easy and attractive

CARBIDE BURRS

The popular carbide burrs Z42 Inox/Steel and ZX Universal in practical retail packaging.
Pages 328/329

FLAP WHEELS

SFL, SFV and SFM flap wheels in retail packaging for a wide variety of applications. **Pages 331/332**

DIAMOND CUTTING DISCS

The efficient diamond cutting disc for the construction site and the inexpensive option for cutting tiles in retail packaging.
Page 333

COUNTER DISPLAY, LOCKABLE

For the presentation and individual sale of LUKAS burrs. Place it on your sales counter or shelves. **Page 328**



OUR RETAIL TRADE SELECTION



ADDITIONAL LUKAS PRODUCTS

This display wall is not only ideal for attractively presenting practical LUKAS retail trade products, many other LUKAS tools can also be displayed to advantage on the flexibly designed perforated stand. Select suitable products from the overview below and design your sales area the way you want.

DISPLAY WALL

Appeal to customers directly with LUKAS products.
Page 326

CUTTING DISC SETS

Various cutting disc sets in high quality, practical and secure metal boxes. **Page 327**

MOUNTED POINTS SELECTION

Mounted points in various shapes in retail packaging. Ideal for letting your customers test our product. **Page 330**

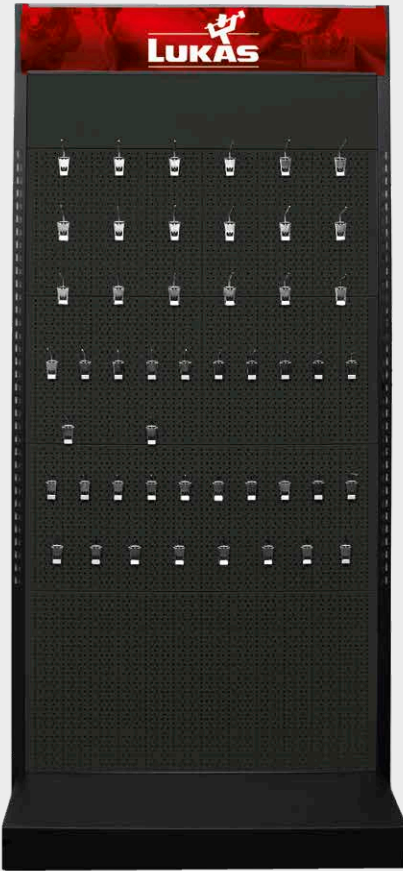
COUNTER DISPLAY

Counter display for up to 10 metal boxes of LUKAS cutting disc sets for direct dispensing to customers. **Page 326**

LUKAS PRODUCT HIGHLIGHTS FOR YOUR DISPLAY STAND

Milling tools	Page 43	Flap wheels	Pages 164–180
HZB special drill	Page 61	LSL flap wheels in abrasive cloth with thread	Page 182
Diamond dry drills	Page 61	Fibre discs with backing plate	Pages 236–241
Diamond drill bit for socket outlets	Page 63	Cutting discs	Pages 244–259
P6PT range	Pages 117–119	Diamond cutting discs	Pages 260–267
Small polishing points with soft elastomer bond	Page 123	Grinding discs	Pages 270–281
iQ series tools	Pages 134–151	ASVT grinding disc	Page 287
Additional mounted flap wheels	Pages 152–161		

Display stand



- stable, self supporting displaystand with perforated panel
- customised presentation

★★☆

Product number	Description	Dimensions (W x H x D) m	Accessories	Pack contains
A89404	Display stand	1 x 2.10 x 0.37	Hook hangers for Euro-hole packaging Hook hangers for all products with a hole, suspended shelf and brochure dispenser	1

Counter display



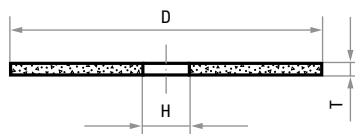
- counter display (without contents) for 10 boxes of cutting disc sets

★★☆

Product number	Description	Dimensions (W x H x D) mm	Pack contains
A89406	Counter display	145 x 440 x 145	1



3-star cutting disc set



The practical packaging for construction sites etc.

- cutting disc in metal box
- securely packaged
- protected from moisture

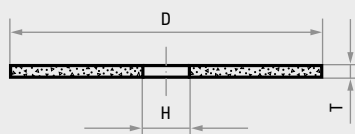
★★★

Product number	Description	Quality	D mm	T mm	H mm	n _{max} rpm	Pack contains
AT007231V9807010	T41 115x1.0	A60Z-BF Inox	115	1.0	22.23	13,300	10
AT007233V9807010	T41 125x1.0	A60Z-BF Inox	125	1.0	22.23	12,200	10

Recommended for: ● Inox/Steel ● Steel ● Titanium ● Aluminium ● Cast material



2-star cutting disc set



The practical packaging for construction sites etc.

- cutting disc in metal box
- securely packaged
- protected from moisture

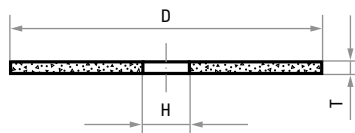
★★☆

Product number	Description	Quality	D mm	T mm	H mm	n _{max} rpm	Pack contains
AT005841V9807010	T41 115x1.0	A60X-BF Inox	115	1.0	22.23	13,300	10
AT005842V9807010	T41 125x1.0	A60X-BF Inox	125	1.0	22.23	12,200	10

Recommended for: ● Inox/Steel ● Steel ● Titanium ● Aluminium ● Cast material



1-star cutting disc set



The practical packaging for construction sites etc.

- cutting disc in metal box
- securely packaged
- protected from moisture

★☆☆

Product number	Description	Quality	D mm	T mm	H mm	n _{max} rpm	Pack contains
AT004643V9807010	T41 115x1.0	A60S-BF Inox	115	1.0	22.23	13,300	10
AT002672V9807010	T41 125x1.0	A60S-BF Inox	125	1.0	22.23	12,200	10

Recommended for: ● Inox/Steel ● Steel ● Titanium ● Aluminium ● Cast material

Counter display for tungsten carbide burrs

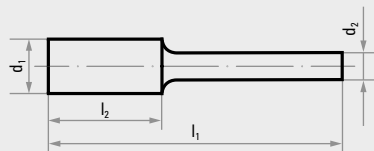
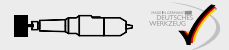


☆☆☆

- for the presentation and individual sale of LUKAS carbide burrs with a 3 mm or 6 mm shank diameter
- lockable display
- also fits into shelves

Product number	Description	Dimensions (W x H x D) mm	Content 2 per pack			Pack contains
A5039004022	Counter display for tungsten carbide burrs	235 x 250 x 400	HFA 0313.03 ZX HFA 1225.06 ZX HFC 1020.06 ZX, HFD 0807.06 ZX HFG 0313.03 ZX HFG 1225.06 ZX HFF 1020.06 ZX	HFA 0820.06 ZX HFC 0313.03 ZX HFC 1225.06 ZX HFD 1009.06 ZX HFG 0820.06 ZX HFM 0311.03 ZX HFF 1225.06 ZX	HFA 1020.06 ZX HFC 0820.06 ZX HFD 0605.03 ZX HFD 1210.06 ZX HFG 1020.06 ZX HFF 0820.06 ZX	1

Z42 Inox/Steel burr



- one burr for two materials: perfectly process steel and stainless steel with just a single tool
- in retail packaging
- high chip volume thanks to coarse cut for quick working
- faceted toothing for perfect surface results
- smooth running, low-vibration tool without chatter thanks to improved cutting angle

☆☆☆

Product number	Description	Cut	Similar to DIN 8033	d ₁ mm	l ₂ mm	d ₂ mm	l ₁ mm	Pack contains
A10010820620F1	HFA 0820.06	Z42 Inox/Steel	ZYA 0820	8	20	6	60	1
A10011225620F1	HFA 1225.06	Z42 Inox/Steel	ZYA 1225	12	25	6	65	1
A10020820620F1	HFC 0820.06	Z42 Inox/Steel	WRC 0820	8	20	6	60	1
A10021225620F1	HFC 1225.06	Z42 Inox/Steel	WRC 1225	12	25	6	65	1
A10030605620F1	HFD 0605.06	Z42 Inox/Steel	KUD 0605	6	5	6	50	1
A10030807620F1	HFD 0807.06	Z42 Inox/Steel	KUD 0807	8	7	6	47	1
A10031210620F1	HFD 1210.06	Z42 Inox/Steel	KUD 1210	12	10	6	51	1
A10100820620F1	HFF 0820.06	Z42 Inox/Steel	-	8	20	6	60	1
A10101225620F1	HFF 1225.06	Z42 Inox/Steel	RBF 1225	12	25	6	65	1
A10040820620F1	HFG 0820.06	Z42 Inox/Steel	SPG 0820	8	20	6	60	1
A10041225620F1	HFG 1225.06	Z42 Inox/Steel	SPG 1225	12	25	6	65	1

Recommended for: ● Inox/Steel ● Steel

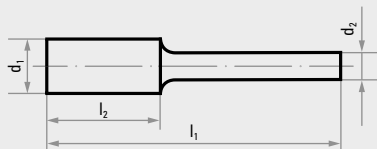


ZX UNIVERSAL - PERFORMS WELL ON ALL MATERIALS

MINIMISE RETOOLING WITH UNIVERSAL CROSS CUT



ZX Universal burr



- the all-round burr for universal use in retail packaging
- with cross cut for high performance



Product number	Description	Cut	Similar to DIN 8033	d ₁ mm	l ₂ mm	d ₂ mm	l ₁ mm	Pack contains
A10010313322F1	HFA 0313.03 ZX	ZX	ZYA 0313	3	13	3	40	1
A10010820622F1	HFA 0820.06 ZX	ZX	ZYA 0820	8	20	6	60	1
A10011225622F1	HFA 1225.06 ZX	ZX	ZYA 1225	12	25	6	65	1
A10020313322F1	HFC 0313.03 ZX	ZX	WRC 0313	3	13	3	40	1
A10020820622F1	HFC 0820.06 ZX	ZX	WRC 0820	8	20	6	60	1
A10021225622F1	HFC 1225.06 ZX	ZX	WRC 1225	12	25	6	65	1
A10030605322F1	HFD 0605.03 ZX	ZX	KUD 0605	6	5	3	35	1
A10030807622F1	HFD 0807.06 ZX	ZX	KUD 0807	8	7	6	47	1
A10031210622F1	HFD 1210.06 ZX	ZX	KUD 0313	12	10	6	51	1
A10100820622F1	HFF 0820.06 ZX	ZX	-	8	20	6	60	1
A10101225622F1	HFF 1225.06 ZX	ZX	RBF 1225	12	25	6	65	1
A10040313322F1	HFG 0313.03 ZX	ZX	SPG 0313	3	13	3	40	1
A10040820622F1	HFG 0820.06 ZX	ZX	SPG 0820	8	20	6	60	1
A10041225622F1	HFG 1225.06 ZX	ZX	SPG 1225	12	25	6	65	1
A10050311322F1	HFM 0311.03 ZX	ZX	SKM 0311	3	11	3	40	1

Recommended for: ● Steel ● Cast material ● Inox/Steel ● Titan

Ceramic mounted point assortment



- maximum aggressiveness and hardness with ceramic self-sharpening effect
- five different shapes for fast tool change in retail packaging
- impressive tool life
- higher and faster stock removal particularly on hardened surfaces, scale, hard coatings and armour steel welds

★★★

Product number	Description	Shank diameter mm	Quality	Content	Pack contains
A20480005677F1	Ceramic assortment	6	Ceramic	5 parts: ZY 1020, ZY 1632, SP 1320, KU 1313, KE 1632	1

Recommended for: Steel Titanium Inox/Steel

Inox mounted point assortment



- for non-rusting steel
- 4 different shapes for fast tool changes, in specialist retail packaging
- excellent stock removal performance, also under adverse conditions

★★☆

Product number	Description	Shank diameter mm	Quality	Content	Pack contains
A20480004627WF1	Inox assortment	6	NK BA	4 parts: ZY 1332.06 NK 24 N BA soft ZY 2040.06 NK 24 N BA soft ZY2 4006.06 NK 24 N BA soft KU 2525.06 NKB/NK 24 R BA 98	1

Recommended for: Inox/Steel Steel Aluminium

Steel mounted point assortment



- top results with regular aluminium oxide, on structural steel, when rough grinding and finishing
- 5 different shapes for fast tool changes, in specialist retail packaging
- extremely hard and sharp for an impressively long tool life
- also machines hard materials efficiently

★★☆

Product number	Description	Shank diameter mm	Quality	Content	Pack contains
A20480005602F1	Steel assortment	6	EKR	5 parts: ZY 1632.06 EKR 46 N V4 ZY 2525.06 EKR 36 N V4 WKS 2025.06 EKR 60 N V4 KU 2525.06, EKR 36 N V4 KE 1632.06, EKR 46 N V4	1

Recommended for: Steel



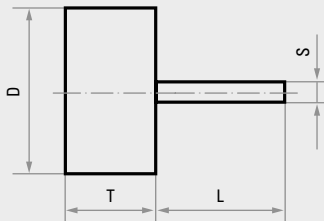
EFFICIENT AND PRODUCTIVE SURFACE GRINDING

THE PRACTICAL ALL-ROUND MOUNTED FLAP WHEELS FROM LUKAS



SFL mounted flap wheels

- mounted flap wheels with abrasive cloth for manual use in retail packaging
- ideal for finishing, derusting, fettling, deburring, surface grinding, decorative finishing and bevelling
- impressive tool life working with various materials



★★☆

Product number	Description	Grit	D mm	T mm	S mm	L mm	n _{rec} rpm	n _{max} rpm	Pack contains
A2200030103060F1	SFL 03010.03	NK 60	30	10	3	40	16,000	18,000	1
A2200030103080F1	SFL 03010.03	NK 80	30	10	3	40	16,000	18,000	1
A2200030103120F1	SFL 03010.03	NK 120	30	10	3	40	16,000	18,000	1
A2200040206060F1	SFL 04020.06	NK 60	40	20	6	40	12,000	19,100	1
A2200040206080F1	SFL 04020.06	NK 80	40	20	6	40	12,000	19,100	1
A2200040206120F1	SFL 04020.06	NK 120	40	20	6	40	12,000	19,100	1
A2200060306040F1	SFL 06030.06	NK 40	60	30	6	40	8,000	12,700	1
A2200060306060F1	SFL 06030.06	NK 60	60	30	6	40	8,000	12,700	1
A2200060306080F1	SFL 06030.06	NK 80	60	30	6	40	8,000	12,700	1
A2200060306120F1	SFL 06030.06	NK 120	60	30	6	40	8,000	12,700	1

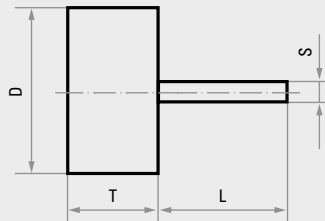
Recommended for: ● Inox/Steel ● Steel ● Aluminium ● Plastic/Wood ● Titanium

THE FINISHING TOUCH FOR SURFACES

ABRASIVE FLEECE FOR MANUAL USE



SFV mounted flap wheels



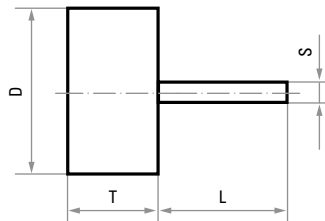
★★☆

- flap wheels with regular aluminium oxide in retail packaging
- consisting of abrasive fleece flaps radially located around the hub of the tool
- ideal for matting, conditioning, polishing, finishing and fine surface finishing

Product number	Description	Quality	Grit	D mm	T mm	S mm	L mm	n _{recom} rpm	n _{max} rpm	Pack contains
A2203040206104F1	SFV 04020.06	A 104	NK 100	40	20	6	40	7,500	14,000	1
A2203040206106F1	SFV 04020.06	A 106	NK 180	40	20	6	40	7,500	14,000	1
A2203060306104F1	SFV 06030.06	A 104	NK 100	60	30	6	40	5,000	9,000	1
A2203060306106F1	SFV 06030.06	A 106	NK 180	60	30	6	40	5,000	9,000	1

Recommended for: ● Inox/Steel ● Steel ● Aluminium ● Plastic/Wood ● Titanium

SFM mounted flap wheels



★★☆

- flap wheels with regular aluminium oxide in retail packaging
- in a combination of abrasive fleece and cloth for a high stock removal performance
- suitable for cleaning, derusting, pre-finishing, graining and keying

Product number	Description	Quality	Grit	D mm	T mm	S mm	L mm	n _{recom} rpm	n _{max} rpm	Pack contains
A2204040206104F1	SFM 04020.06	A 104/80	NK 100/80	40	20	6	40	7,500	14,000	1
A2204040206106F1	SFM 04020.06	A 106/150	NK 180/150	40	20	6	40	7,500	14,000	1
A2204060306104F1	SFM 06030.06	A 104/80	NK 100/80	60	30	6	40	5,000	9,000	1
A2204060306106F1	SFM 06030.06	A 106/150	NK 180/150	60	30	6	40	5,000	9,000	1

Recommended for: ● Inox/Steel ● Steel ● Aluminium ● Plastic/Wood ● Titanium

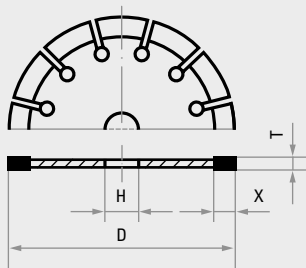
IDEAL FOR USE ON CONSTRUCTION SITES

LUKAS DIAMOND CUTTING DISCS FOR EFFICIENT USE

This diamond cutting disc for construction sites is coated with synthetic diamonds bonded with an innovative alloy. It enables universal cutting of the hardest materials at a high operating speed.



- in retail packaging
- especially popular on construction sites
- excellent price-to-performance ratio



Blue Cut S10 diamond cutting disc



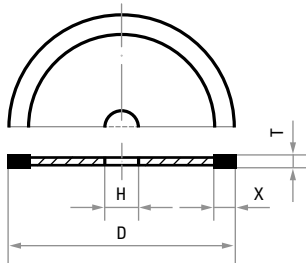
★☆☆

Product number	Description	D mm	Segment height X mm	Segment width T mm	H mm	n _{max} rpm	Pack contains
A345241151110085	Blue Cut S10	115	10	2.0	22.23	13,300	1
A345241251110095	Blue Cut S10	125	10	2.0	22.23	12,200	1
A345241501110125	Blue Cut S10	150	10	2.2	22.23	10,200	1
A345241801110145	Blue Cut S10	180	10	2.4	22.23	8,500	1
A345242301110165	Blue Cut S10	230	10	2.5	22.23	6,600	1

Recommended for: ● Stone/Construction material



- in retail packaging
- especially popular on construction sites
- excellent price-to-performance ratio



FC7 diamond cutting disc



★☆☆

Product number	Description	D mm	Segment height X mm	Segment width T mm	H mm	n _{max} rpm	Pack contains
A345211151107015	FC7	115	7	1.8	22.23	13,300	1
A345211251107015	FC7	125	7	2.0	22.23	12,200	1
A345212301107015	FC7	230	7	2.5	22.23	6,600	1

Recommended for: ● Stone/Construction material